

ASSESSING CULTURAL EFFECTS

1

Alex has an idea.



APPLICANT

3

Alex contacts council to talk through his activity and request contacts for tangata whenua.



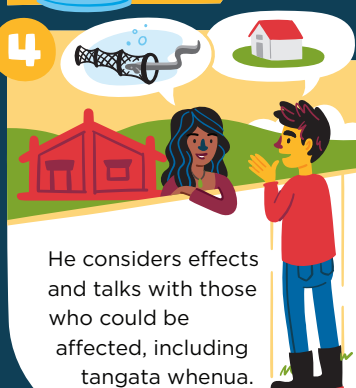
2

He checks council plans and rules to see if his idea is an activity that needs resource consent.



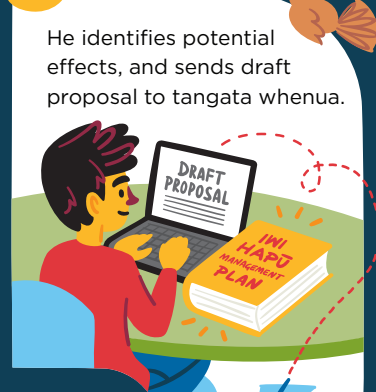
4

He considers effects and talks with those who could be affected, including tangata whenua.



5

He identifies potential effects, and sends draft proposal to tangata whenua.



7

WHAT WILL THIS LOOK LIKE?

Tangata whenua acknowledge request, identify potential cultural effects and agree with Alex on how assessment will be carried out.

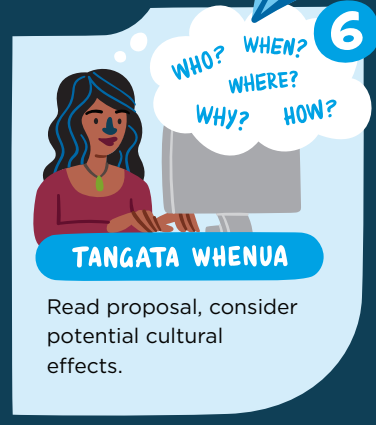


6

WHO? WHEN? WHERE? WHY? HOW?

TANGATA WHENUA

Read proposal, consider potential cultural effects.



8

Cultural values are identified and discussed with Alex.

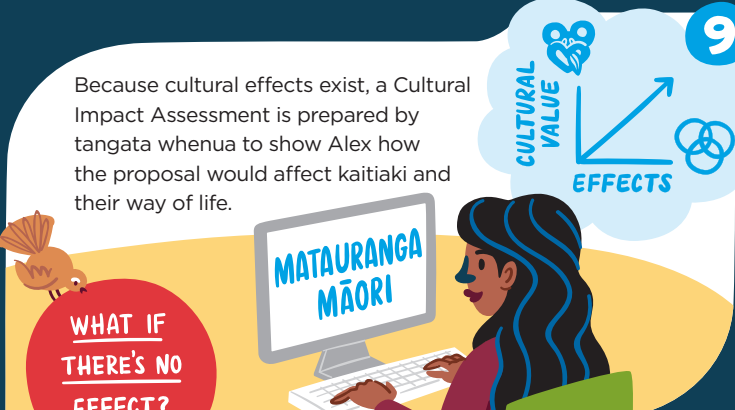


9

Because cultural effects exist, a Cultural Impact Assessment is prepared by tangata whenua to show Alex how the proposal would affect kaitiaki and their way of life.

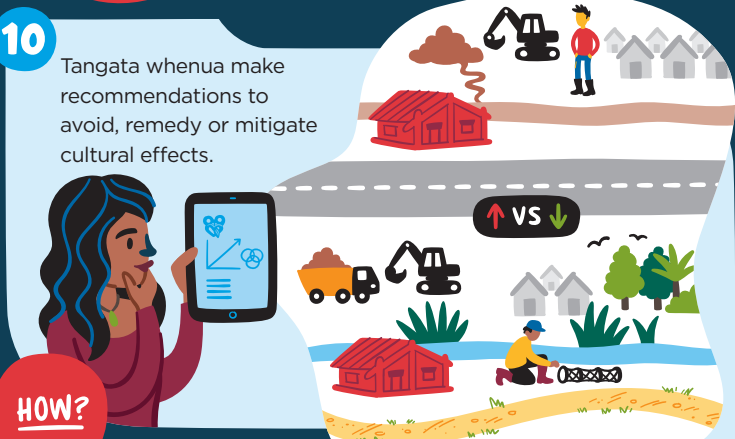


WHAT IF THERE'S NO EFFECT?



10

Tangata whenua make recommendations to avoid, remedy or mitigate cultural effects.



11

Alex receives Cultural Impact Assessment.

RAWE, TINO PAI TENEI MAHI



12

Alex completes an environmental effects assessment and includes the Cultural Impact Assessment with his consent application.

