

The Members

Ohiwa Harbour Implementation Forum

NOTICE IS GIVEN that the next meeting of the **Ohiwa Harbour Implementation Forum** will be held in **Council Chambers, Opotiki District Council, 108 St John Street, Opotiki** on:

EMBARGOED

Until 2 working days before meeting on:

Monday, 21 March 2011

commencing at 9.30 a.m.

Note: A field trip is scheduled at the conclusion of the meeting at 1.00 pm to Onekawa Te Mawhai and Nukuhou River Erosion Control Works



Whakatohea Maori Trust Board

Upokorehe



TE WAIMANA KAAKU



TE RŪNANGA O NGĀTI ĀWA

Ohiwa Harbour Implementation Forum

Bill Bayfield
Chief Executive
Joint Committee Administering Authority

14 March 2011

Ōhiwa Harbour Implementation Forum – Terms of Reference

Delegated Function

To oversee and monitor the implementation of the Ohiwa Harbour Strategy.

Membership

Membership will consist of an appointed councillor from each of the three Councils and appointed representatives of local Iwi as follows:

- One representative - Opotiki District Council.
- One representative - Whakatane District Council.
- One representative - Bay of Plenty Regional Council.
- Four appointees (Tangata Whenua) representing Whakatōhea, Upokorehe, Ngāti Awa and Ngāi Tahu.

The Forum (made up of the representatives as outlined above) will specifically invite attendance by organisations/groups which they believe will be interested (such as the Department of Conservation, Ministry of Fisheries, Nukuhou Salt Marsh Care Group). The meetings will also be publicly advertised so that members of the wider community can also attend.

Standing Orders

The Bay of Plenty Regional Council Standing Orders, October 2010, based on the New Zealand Standard Model will apply to this Joint Committee, except as varied by these Terms of Reference or unless the members of the Joint Committee unanimously agree to vary those standing orders as they apply to the Joint Committee.

Chair

The 'Ōhiwa Harbour Implementation Forum' elects a Chairperson at its first meeting each Triennium.

Frequency of meetings

Meetings will be held every six months or as required.

Term of the Committee

The need for and purpose of 'Ohiwa Harbour Implementation Forum' will be revisited every three years from the date of the first meeting. The establishment of the 'Ohiwa Harbour Implementation Forum' is subject to review 3 - yearly following local authority elections. Subject to the Forum being re-appointed, Councillor and appointed tangata whenua representatives are appointed by the incoming Councils.

Specific Responsibilities and Delegated Authority

The 'Ōhiwa Harbour Implementation Forum':

- is the sponsor of the Ohiwa Harbour Strategy;
- is responsible for overseeing the implementation of the actions in the Strategy;
- has an overall monitoring role in terms of timeframes and deliverables;
- maintains a general awareness of the issues surrounding the Ohiwa Harbour Catchment; and
- is responsible for reporting back to the strategic partners and to the community.

The 'Ōhiwa Harbour Implementation Forum' will:

- Receive reports (including those prepared by staff of the three Councils) of what has recently been achieved with regards to implementing the Strategy, and outlining what the next targets for implementation could be;
- Provide a sounding board for officers to test implementation ideas against;
- Provide recommendations that can be reported back to councils; and
- Promote links with the Ohiwa Harbour Catchment community.

Administering Authority

Bay of Plenty Regional Council is responsible for the administration of the 'Ohiwa Harbour Implementation Forum'.

Note:

The Ōhiwa Harbour Implementation Forum reports directly to the Operational Monitoring and Regulation Committee.

The 'Ōhiwa Harbour Implementation Forum' has no delegated authority for financial expenditure.

The costs of attendance at meetings lie where they fall. The exception to this is that a standard meeting fee will be provided for Iwi representation. The cost of this will be borne by the Bay of Plenty Regional Council. The actions to give effect to the Strategy itself and costs associated with reporting to the Committee are funded from within the budgets of participating councils.

*The Ōhiwa Harbour Implementation Forum is a **recommending** body only, and does not have decision-making powers.*

Public Forum

1. A period of up to 15 minutes shall be set aside near the beginning of the meeting to enable members of the public to make statements about any matter on the agenda of that meeting which is open to the public, but excluding any matter on which comment could prejudice any specified statutory process the council is required to follow.
2. The time allowed for each speaker will normally be up to 5 minutes but will be up to the discretion of the chair. A maximum of 3 public participants will be allowed per meeting.
3. No statements by public participants to the Council shall be allowed unless a written, electronic or oral application has been received by the Chief Executive (Governance Team) by 12.00 noon of the working day prior to the meeting and the Chair's approval has subsequently been obtained. The application shall include the following:
 - name of participant;
 - organisation represented (if any);
 - meeting at which they wish to participate; and matter on the agenda to be addressed.
4. Members of the meeting may put questions to any public participants, relevant to the matter being raised through the chair. Any questions must be asked and answered within the time period given to a public participant. The chair shall determine the number of questions.

Committee Membership

Chairman: To be elected

Appointees: Councillor C Chambers (Whakatane District Council), M Edwards (Member, Whakatohea Maori Trust Board), Councillor S Fisher (Opotiki District Council), T Manuel (Member, Upokorehe), K Merito (Chairman, Te Runanga o Ngati Awa), N Rua (Member for Ngai Tahu), Councillor M Whitaker (Bay of Plenty Regional Council)

Secretary: S Kameta

Recommendations in reports are not to be construed as Council policy until adopted by Council.

Agenda

1 Whakatau Welcome

- Karakia Whakawatea (opening prayer)
- Hakari (break for morning tea)

2 Apologies

3 General Business and Tabled Items

Items not on the agenda for the meeting require a resolution under section 46A of the Local Government Official Information and Meetings Act 1987 stating the reasons why the item was not on the agenda and why it cannot be delayed until a subsequent meeting.

4	First Meeting Matters	
4.1	Ohiwa Harbour Implementation Forum First Meeting Matters	11
5	Minutes	
5.1	Ohiwa Harbour Implementation Forum Meeting - 1 September 2010	17
6	Reports	
6.1	Ohiwa Harbour Strategy Implementation Progress	25
6.2	Ohiwa – A Co-operative Approach to Kaitiakitanga	29
6.3	Ohiwa Harbour Strategy Action Report	33
6.4	Update on operational activity at the Onekawa Te Mawhai properties	41
6.5	Update on Ohiwa Harbour Mangrove Management	49
6.6	Ohiwa Harbour Communications Plan update	53
	Ohiwa Harbour Communications Plan Update	
7	Consideration of General Business	

Field Trip at 1.00 pm

At the conclusion of the meeting a field trip will proceed from 1.00 p.m. to 2.00 p.m. to:

- Onekawa Te Mawhai
- Nukuhou River Erosion Control Works

First Meeting Matters

File Reference: 2.00019
Significance of Decision: Receives Only - No Decisions



Report To: Ohiwa Harbour Implementation Forum
Meeting Date: 21 March 2011
Report From: Simon Stokes, Manager Land Resources (Eastern)

Ohiwa Harbour Implementation Forum First Meeting Matters

Executive Summary

The purpose of this paper is to discuss first meeting matters with the Ohiwa Harbour Implementation Forum (the 'Forum') representatives. It outlines the basis for the 'Forum' and its responsibilities..

1 Recommendations

That the Ohiwa Harbour Implementation Forum under its delegated authority:

- 1 Receives the report, Ohiwa Harbour Implementation Forum First Meeting Matters.**
- 2 Approves that the chairperson will rotate on the basis of meeting venue, within the Ōhiwa Harbour Strategy partners, over the current triennium.**
- 3 Elects a chairperson for this meeting of the Ōhiwa Harbour Implementation Forum.**
- 4 Confirms the venue and chairperson for the next Ōhiwa Harbour Implementation Forum meeting on October 28th 2011 is held by Ngai Tuhoe.**
- 5 Confirms the Ōhiwa Harbour Implementation Forum Terms of Reference and notes that the 'Ohiwa Harbour Implementation Forum' will be administered by Bay of Plenty Regional Council, with the involvement and support of staff and representatives from all seven partners.**

2 Background

In a report to the Strategic Policy Committee entitled '*Approval of the Ohiwa Harbour Strategy*', the Hearing Committee recommended that the Ohiwa Harbour Strategy be approved. One of the characteristics of the preparation of Strategy had been the joint involvement of Bay of Plenty Regional Council, Whakatane and Opotiki District Councils, Upokorehe, Whakatohea, Ngati Awa, and Ngāi Tuhoe. One of the issues raised during the submission process and considered by the Hearing Committee was the request to establish a representative group to oversee the implementation of the Ohiwa Harbour Strategy, once operative. Subsequently, under clause 30(1) of Schedule 7 to the Local Government Act 2002, the Councils approved that the joint committee, 'Ohiwa Harbour Implementation Forum', be established.

There are a number of benefits in establishing a group to oversee the implementation of the Strategy – in particular, it provides an avenue for various individuals and representatives of groups involved with managing Ohiwa Harbour to come together to co-ordinate the implementation of actions in the Ohiwa Harbour Strategy. The establishment of a group would also build on the positive relationships which have developed throughout the development of the Strategy.

The Hearing Committee considered the various options available and recommended that a group established under the Local Government Act with an elected representative from each of Bay of Plenty Regional Council, Opotiki District Council, Whakatane District Council and an iwi appointee (representing Upokorehe, Whakatohea, Ngati Awa and Tuhoe) be established. This group is to be titled the Ohiwa Harbour Implementation Forum (The 'Forum') and would thus have four members. Representation for iwi has been subsequently amended since this original decision to have all four iwi/hapū represented appropriately and therefore all seven partners on the 'Forum'.

The 'Forum's' role would be to oversee the implementation of the Strategy, to receive progress reports outlining what has recently been achieved in terms of implementation and what the next steps for implementation will be, and to make recommendations back to their respective organisations regarding the management of Ohiwa Harbour and its catchments.

An important aspect of this 'Ohiwa Harbour Implementation Forum' is that it is intended that meetings will be open to other key organisations and agencies that have a role in the management of Ohiwa Harbour (for example the Ministry of Fisheries and the Department of Conservation). Invitations would also be extended to representatives/members of community groups which are actively involved in caring for Ohiwa Harbour (such as the Nukuhou Salt Marsh Care Group). Individuals from the wider community would also be welcome to attend.

The Forum is to convene twice a year. Reports will mostly be received from the Ōhiwa Harbour Strategy Coordination Group. These meetings are also open for other agencies or community groups to present and report. The meetings would also provide the opportunity for the public to ask questions about the implementation of the Strategy.

The key benefit of formally establishing a group to oversee the implementation of the Strategy is that it provides a forum to build on relationships between all agencies that was built and has continued during the development and implementation of the Strategy.

It has taken longer than expected to establish the 'Forum' and to hold the inaugural meeting since the strategy was finalised and approved in June 2008. Since that time, the Ōhiwa Harbour Strategy Coordination Group (OHSCG) was formed in 2008 and is a working level partnership of all seven strategy partners. This group has met nine times with regards to implementing the strategy actions.

1 Ohiwa Harbour Implementation Forum

1.1 Purpose of Ohiwa Harbour Implementation Forum

The key purpose of the group is to oversee the implementation of the Strategy and provide a sounding board for the partners and other agencies with harbour and catchment management responsibilities. The roles and responsibilities of the group are outlined in 'Terms of Reference for Ohiwa Harbour Implementation Forum' its (refer agenda index pages), and are summarised below:

- To meet every six months or as required to oversee the implementation of actions in the Strategy;
- To receive reports prepared by the Ōhiwa Harbour Strategy Coordination Group, individual partners or others, regarding what has recently been achieved with regards to implementing the Strategy, and outlining what the next targets for implementation could be;
- To provide recommendations that can be reported back to their respective organisations;
- To be generally aware of the issues surrounding the Ohiwa Harbour Catchment; and
- To provide links to the Ohiwa Harbour Catchment community.

1.2 Ohiwa Harbour Implementation Forum Membership

The Bay of Plenty Regional Council confirmed the following representatives to sit on the 'Forum' for this triennium. Membership consists of a nominated councillor from each of the three Councils and a nominated representative from each of the four iwi as follows:

Opotiki District Council	Councillor Selby Fisher
Whakatane District Council	Councillor Christine Chambers
Bay of Plenty Regional Council	Councillor Malcolm Whitaker
Whakatohea	Maude Edwards (Whakatohea Maori Trust Board)
Upokorehe	Maui Manuel
Ngai Tūhoe	Nika Rua (Waimana Kaaku Trust)
Ngati Awa	Te Kei Merito (Te Runanga o Ngati Awa)

Although the 'Forum' is limited to seven representatives it is recognised that there are other agencies, groups, and individuals that have a strong interest in the management of Ohiwa Harbour. It is therefore recommended that the meetings be publicly advertised to allow members from the wider community to attend. Invitations can also be extended to other key agencies and organisations.

1.3 Benefits

The benefits of establishing a group to oversee the implementation of the Strategy include that it:

- Retains an emphasis on completing actions in the Ohiwa Harbour Strategy;
- Provides a forum for representatives from the partners to come together to co-ordinate the implementation of actions and to discuss matters arising within the Ohiwa Harbour Catchment;
- Provides the opportunity for individuals and representatives from community groups (e.g. the Nukuhou Salt Marsh Care Group), other agencies (e.g. the Department of Conservation) and local iwi to be involved and informed about the implementation of actions;
- Builds on the positive relationships established through developing the draft Strategy.

1.4 Election of the Chair

A venue calendar for 'Forum' meetings has been circulated and approved by the Ohiwa Harbour Strategy Coordination Group partners as required to address administrative responsibilities for holding meetings. This calendar rotates the 'Forum' meeting venue over the three year period of this triennium. As there are only six meetings designated over the three years, all partners host a meeting, except Ngati Awa, who hosted a meeting on September 1st 2010.

Because meetings are infrequent and that there is a level of informality and cooperation within the Forum it would be relevant to see the chairpersons role rotated by venue, thus allowing all partners to chair a meeting in their District or rohe.

This would commit a partner to hosting the 'Forum' and allow each partner to retain the appropriate kaupapa for each meeting. It should also be noted that if this process was not suitable at the time for a hosting partner then the venue calendar could alter accordingly.

The next meeting is on October 28th 2011 to be hosted by Ngāi Tūhoe (represented by the Waimana Kaaku Trust). This would mean that Ngāi Tūhoe would chair the meeting.

There are no administrative complications with the 'Forum' accepting this change.

2 Administration and Costs

Each Council will be responsible for bearing the cost of their representation.

Costs involved with running the meeting (such as general administration, venue) will be borne by Bay of Plenty Regional Council regardless of venue location. It would be good to see all partners host a meeting on a rota basis.

Bay of Plenty Regional Council will provide a meeting fee to the iwi representative (based on standard meeting fee rates).

The need for and purpose of the 'Ohiwa Harbour Implementation Forum' will be reviewed every three years.

3 Financial Implications

Current Budget

There are no financial implications with the current budget.

Future Implications

Future budget implications for the Ohiwa Harbour Implementation Forum will be managed through the Annual Plan and Ten Year Plan processes.

Ten Year / Annual Plan Implications

There are no implications..

Simon Stokes
Manager Land Resources (Eastern)

11 March 2011

Appendix

MEMORANDUM



To: Ohiwa Harbour Strategy Coordination Group

From: Simon Stokes
Land Resources Manager (Eastern)

Date: 12 November 2010

File Ref: A544111

Subject: **Calendar and venues for OHSCG and OHIF hui**

In 2011 we need to hold two Ohiwa Harbour Implementation Forum and four Ohiwa Harbour Strategy Coordination Group hui. The following is a calendar schedule and venue. Administration and catering is managed and funded by the Bay of Plenty Regional Council. We have already held two OHIF meetings – at Te Runanga O Ngati Awa and Bay of Plenty Regional Council.

Timetable

Ohiwa Harbour Implementation Forum

- 1 March 21st 2011 venue: Opotiki District Council
- 2 October 28th 2011 venue: Ngai Tuhoe (Waimana Kaaku Trust to coordinate)
- 3 March 26th 2012 venue: Whakatane District Council
- 4 October 22nd 2012 venue: Whakatohea Maori Trust Board
- 5 March 25th 2013 venue: Upokorehe
- 6 October 21st 2013 venue: Bay of Plenty Regional Council

Ohiwa Harbour Strategy Coordination Group

- 1 February 10th 2011 venue: Ngai Tuhoe (Waimana Kaaku Trust to coordinate)
- 2 May 20th 2011 venue: Whakatohea Maori Trust Board
- 3 August 26th 2011 venue: Opotiki District Council
- 4 December 9th 2011 venue: Whakatane District Council
- 5 February 17th 2012 venue: Upokorehe
- 6 May 25th 2012 venue: Bay of Plenty Regional Council
- 7 August 24th 2012 venue: Te Runanga O Ngati Awa
- 8 December 14th 2012 venue: Ngai Tuhoe (Waimana Kaaku Trust to coordinate)

Minutes

Minutes of the Ohiwa Harbour Implementation Forum Meeting held in the Boardroom, Te Runanga o Ngati Awa, Louvain Street, Whakatane on Wednesday, 1 September 2010 commencing at 11.00 a.m.

Present:

Chairman: M Whitaker (Councillor, Bay of Plenty Regional Council)

Members: C Chambers (Councillor, Whakatane District Council), S Fisher (Councillor, Opotiki District Council), M Manuel (Member, Upokorehe), N Rua (Member, Waimana Kaaku)

In Attendance: Councillors T Marr and R Ford (Bay of Plenty Regional Council), J Hata (Whakatohea Maori Trust Board) and B Hughes (Te Runanga o Ngati Awa).

S Stokes (Manager, Land Resources (Eastern)), R Skelton (Manager, Land Resources (Western)), B Rowson (Estuary Care Officer), M Lee (Planner) and P Maxwell of Bay of Plenty Regional Council. Mike and Meg Collins (Ohiwa Reserves Group), P Chapman (Whakatane District Council), F Hennessey (Department of Conservation), O Orupe and D Wickliffe (Waimana Kaaku).

Apologies: R Edwards (Chairman, Whakatohea Maori Trust Board) and K Merito (Te Runanga o Ngati Awa).

4 **Mihi**

Simon Stokes (Manager, Land Resources (Eastern)).

Reply

John Hata (Substitute member, Whakatohea Maori Trust Board)

5 **Karakia**

John Hata

6 **Nomination of Chairperson**

Simon Stokes (Manager Land Resources (Eastern)) called for nominations for the position of Chairperson of the Forum. Councillor Malcolm Whitaker was nominated by Councillor Christine Chambers and seconded by John Hata. It was noted that the Chairperson position would be for this meeting only

There being no further nominations, Mr Stokes declared Councillor Malcolm Whitaker duly elected as Chairperson of the Ohiwa Harbour Implementation Forum. Councillor Whitaker assumed the Chair.

7 **Attendance**

The following attendances were advised by the Chair:

- John Hata (Whakatohea Maori Trust Board) attended the meeting as a substitute for the member from Whakatohea Maori Trust Board, Chairman Robert Edwards;
- Beverley Hughes (Te Runanga o Ngati Awa) was in attendance at the meeting as a substitute for the member from Te Runanga o Ngati Awa, Te Kei Merito.

8 **General Business and Tabled Items**

Resolved

That pursuant to section 46A of the Local Government Official Information and Meetings Act 1987 the following items be considered at this meeting.

8.1 **Minutes of the Inaugural Ohiwa Harbour Implementation Forum Meeting – 3 May 2010**

Reason

The Minutes had not been included in the Agenda and needed to be received by the Forum.

Give Reasons

The matter could not wait until the next meeting.

**Whitaker/Manuel
CARRIED**

9 **Chairman's Announcement**

The Chair announced that he would take the Tabled Minutes first.

10 **General Business and Tabled Items**

10.1 **Minutes of the Inaugural Ohiwa Harbour Implementation Forum Meeting – 3 May 2010**

Refer Tabled Document 1.

Simon Stokes (Manager Land Resources (Eastern)) informed the Forum that the Minutes had already been circulated to members by email, confirmed by Council at its June meeting and explained that it was best practice to have the Minutes received at the Forum.

Mr Stokes updated the Forum on the following progress since the Inaugural meeting:

- 3.1 The Ōhiwa Harbour Strategy Coordination Group (OHSCG) had reviewed the Forum's Terms of Reference and concluded that the current Terms of reference were suitable. It was clarified that the OHIF could provide recommendations as decisions.
- 3.2 A field trip had been organised to take place at the end of the meeting; and
- 3.4 The Ramsar report would be presented at the meeting.

Resolved

That the Ohiwa Harbour Implementation Forum under its delegated authority:

- 1 Receives the minutes of the Inaugural Ohiwa Harbour Implementation Forum meeting held on 3 May 2010.**

**Whitaker/Manuel
CARRIED**

11 Reports

11.1 Ohiwa Harbour Strategy Implementation Progress

Simon Stokes (Manager, Land Resources (Eastern)) presented the report that updated the Forum on actions contained within the Ohiwa Harbour Strategy. He highlighted the ongoing work with Care Groups based around the harbour and provided a brief summary of the current activities.

Mr Stokes sought the Forum's approval to allow the OHSCGOHSCG to look at branding that would represent the Forum. Some members were concerned and the matter was discussed further. There was agreement that there needed to be a quick guide for the public to refer to and the option of a fridge magnet and/or pamphlet was put forward.

Mr Stokes thanked the Forum for its input and advised he would take the information back to OHSCG.

Mr Stokes concluded his report by updating the Forum on ecological actions required in the Strategy and that the two main recommendations were to develop a monitoring programme regarding indigenous fish, white bait and inanga; and to confirm threatened vegetation and animal existence.

Members were advised that the book "Discover the Birds of Ohiwa Harbour" would be finalised and launched on 5th October 2010. The Whakatane District Council's District Plan had become operative and the Plan now takes in a small portion of land from Opotiki District Council around Ohiwa Harbour.

Resolved

That the Ohiwa Harbour Implementation Forum under its delegated authority:

- 1 Receives the report, Ohiwa Harbour Strategy Implementation Progress.**

**Chambers/Fisher
CARRIED**

11.2 Ohiwa Harbour Fisheries Report

Simon Stokes (Manager, Land Resources (Eastern)) presented the report on behalf of Alan Moore (Senior Fisheries Analyst (Ministry of Fisheries)) that provided a summary of the fishing management system and rules that apply to Ohiwa Harbour. The report also provided an account of fishing activity within the harbour.

Mr Stokes highlighted to the Forum the following points within the report:

- There was still a rahui in place for the green lipped mussel;
- The last monitoring undertaken in the Harbour was in 2004/2005.
- There were two commercial fisheries within the Harbour that harvested pipi and cockle and Mr Stokes sought the Forum's approval for OHSCG to raise the matter with MoF including the Shellfish Monitoring.

MOTION:

Moved: Fisher

Seconded: Chambers

That the Forum adds a further two recommendations to read:

Thanks the Ministry of Fisheries (MoF) for its report and invites MoF to participate on OHIF and OHSCG.

Agrees that the Ohiwa Harbour Strategy Coordination Group (OHSCG) investigates and identifies the licence holder(s) harvesting pipi and cockle within the Ohiwa Harbour, identifies the amount of shellfish remaining within the Ohiwa Harbour and justifies the levels of the current commercial licences.

Resolved

That the Ohiwa Harbour Implementation Forum under its delegated authority:

- 1 Receives the report, Ohiwa Harbour Fisheries Report.**
- 2 Thanks the Ministry of Fisheries (MoF) for its report and invites MoF to participate on OHIF and OHSCG.**
- 3 Agrees that the Ohiwa Harbour Strategy Coordination Group (OHSCG) investigates and identifies the licence holder(s) harvesting pipi and cockle within the Ohiwa Harbour, identifies the amount of shellfish remaining within the Ohiwa Harbour and justifies the levels of the current commercial licences.**

**Fisher/Chambers
CARRIED**

11.3 Ngati Awa Kaitiakitanga Activities: Ohiwa Harbour 2009/2010

Beverley Hughes (Manager, Environment Ngati Awa) presented her report that provided the Forum with an update on Ngati Awa management and kaitiakitanga activities in 2009/2010.

Ms Hughes highlighted to the Forum the following points within the report:

- The rahui on the taking of mussels from Ohiwa Harbour had been in place since 2004 and was due to be lifted on 27th October 2010.
- TRONA had undertaken a survey at Ohiwa that identified a starfish predation which was believed to be the cause of the depletion of mussel in the Ohiwa Harbour. TRONA welcomed the Forums' support in its application to the MoF for assistance in resolving the issue.
- The public had observed the voluntary rahui on taking of shellfish and fish from the Ohiwa Harbour.
- The Ngati Awa Customary Fisheries Authority was progressing in its pursuit for the Ohiwa Harbour to be an area for customary and recreational fishing only.
- Te Runanga o Ngati Awa was looking at better use of its land.

Members agreed with the concerns that Ms Hughes had raised within the report; and discussed options on how to deal with the matters raised.

MOTION

Moved: Chambers

Seconded: Rua

That the Forum adds a further recommendation to read:

Delegates to Manager Land Resources (Eastern) to invite a representative from the Ministry of Fisheries to discuss a number of issues that the Forum has in relation to Ohiwa Harbour.

Resolved

That the Ohiwa Harbour Implementation Forum under its delegated authority:

- 1 Receives the report, Ngati Awa Kaitiakitanga Activities: Ohiwa Harbour 2009/2010.**
- 2 Delegates to Manager Land Resources (Eastern) to invite a representative from Ministry of Fisheries to discuss a number of issues that the Forum has in relation to Ohiwa Harbour.**

**Chambers/Rua
CARRIED**

11.4 Ramsar Status for Ohiwa Harbour

The Chair invited Megan and Mike Collins to make a presentation to the Forum on the Ramsar Convention.

Mr Collins explained the benefits of becoming a Ramsar site and Mrs Collins guided members through the process of establishing Ramsar status. Mrs Collins used PowerPoint slides to support her presentation which also included slides of different birds that visited/nested at the Ohiwa Harbour.

The Chair explained to the Forum that the item was left to lie on the table at its inaugural meeting. He noted the report by Tonkin and Taylor that was distributed to members and advised that the Forum needed to make a decision today.

Members discussed the matter further and concerns were raised about the lack of awareness and that there needed to be a greater understanding of the Ramsar concept before making a step towards that.

It was noted that Upokorehe, Waimana Kaaku and Whakatohea was not in support of the Ramsar convention. It was also noted that Opotiki District Council's representative, Councillor S Fisher was directed by his Council to take the lead given to him by the Iwi groups.

Resolved

That the Ohiwa Harbour Implementation Forum under its delegated authority:

- 1 Receives the report, Ramsar Status for Ohiwa Harbour.**

**Whitaker/Fisher
CARRIED**

- 2 Retains the status quo for Ohiwa Harbour and not endorse an application to nominate Ohiwa Harbour to the Ramsar convention at this time.**

**Chambers/Rua
CARRIED**

It was noted that the representative from Te Runanga o Ngati Awa abstained from Voting.

The meeting closed at 1.00 p.m.

At the end of the meeting, members undertook a field trip that visited the following sites:

- Ohope wastewater plant and Ngati Awa Farm management;
- Stanley road/Kererutahi property;
- Kutarere/mangroves;
- Ohiwa Walkway; and
- Ohiwa Reserve Care Group.

Reports

File Reference: 2.00019
Significance of Decision: Receives Only - No Decisions



Report To: Ohiwa Harbour Implementation Forum
Meeting Date: 21 March 2011
Report From: Simon Stokes, Manager Land Resources (Eastern)

Ohiwa Harbour Strategy Implementation Progress

Executive Summary

The purpose of this report is to update the Ohiwa Harbour Implementation Forum on actions contained within the Ohiwa Harbour Strategy.

1 Recommendations

That the Ohiwa Harbour Implementation Forum under its delegated authority:

1 Receives the report, Ohiwa Harbour Strategy Implementation Progress.

2 Background

This Ohiwa Harbour Strategy (The 'Strategy') covers the Ohiwa Harbour and its land catchment area.

The Strategy is a non-statutory document that was prepared by Bay of Plenty Regional Council (BOPRC) with input from Whakatane District Council, Opotiki District Council, Ngati Awa, Upokorehe, Whakatohea, and Ngai Tuhoe. The Strategy was formally approved in June 2008

The Strategy sets out a vision for the harbour, identifies key community values and aspirations, identifies key issues and recommends actions to achieve these. It is designed to take the Ohiwa Harbour and its catchment from where it is now to where people want it to be in the future. The Strategy is a combination of; a framework to guide future planning and management; and a set of detailed actions.

The Strategy promotes integration of the wide variety of plans, processes and practices used by councils, government departments, iwi, hapu and members of the community so that these are used to build on each other.

As the Strategy is a non-statutory document, it does not contain any rules and cannot require changes to other planning documents. It provides guidance for the management of the Ohiwa Harbour and catchment only. Recommendations may be made that partner agencies make changes to planning documents to facilitate the achievement of management objectives in the Strategy; however, this is at the discretion of the individual Council or Iwi organisation.

Implementation of the Strategy's actions has been underway since its final approval in June 2008.

Each Ohiwa Harbour Implementation Forum (OHIF) meeting will receive an update report on progress towards implementing actions within the Ohiwa Harbour Strategy.

3 Strategy Actions Update

A complete list of the strategy actions status is shown in Appendix 1.

Highlights of activities since the last Forum meeting include:

- Two Ohiwa Harbour Strategy Coordination Group meetings have been held with representatives from all of the strategy partners since the last OHIF meeting.
- Opotiki District Council, with support from the Bay of Plenty Regional Council has completed the walkway from Ohiwa settlement to the boat ramp along the edge of the Ohiwa harbour. Engagement with Upokorehe with regards to appropriate signage is underway. Discussions with Opotiki District Council have also begun on the next phase of extending the walkway to Reeves Farm.
- Bay of Plenty Regional Council Land Management Activity Summary
 1. Work is progressing with landowners of the Kererutahi block to see a large proportion replanted back into forestry. This will result in a reduction in erosion and the deposition of sediment entering the Waingarara stream.
 2. Work is also progressing on reducing the stream bank erosion in the lower reaches of the Nukuhou River. This work is being carried out between the landowners and the Bay of Plenty Regional Council.
 3. Discussions have begun with interested parties on extending the pest animal and pest plant work that the Nukuhou Saltmarsh Care Group is doing, to Uretara Island.
 4. Ohiwa Reserve Care Group has completed, and are already reprinting, the 'Birds of the Ōhiwa Harbour' book.
- Upokorehe have obtained resource consent to remove mangroves in the Ōhiwa Harbour.
- Under the Ohiwa Harbour Strategy Communications Plan an electronic newsletter has begun and an information brochure on agencies and their roles and contacts has been printed.
- Ecological activity
 - Threatened Plants Survey – Wildlands consultants have been busy with the fieldwork associated with this work and the draft report is due by the end of the month.
 - Marshbird Survey - the fieldwork for this was completed at the end of January (due to a long delay associated with getting permission to access Hiwarau). The report is currently being finalised.

- Freshwater Fish Survey – Staff are carrying out further investigations on freshwater fish populations and presence. Current work is in the upper Wainui catchment. Access and availability of experienced staff is an issue.
- Inanga Spawning Habitat Survey – A summer saline survey has been carried out in order to identify optimum habitat areas, and another end of summer survey is due (to see if the optimum area changes much during low flow periods). The Nukuhou Saltmarsh care group have also been gathering information.
- Staff have also compiled a register of significant ecological sites.
- A very successful celebration day was hosted by Upokorehe and the Bay of Plenty Regional Council at the Onekawa Te Mawhai property purchased by the Bay of Plenty Regional Council.

Cooperation between all of the partners at operational level remains very constructive.

3 **Financial Implications**

Current Budget

There are no funding implications within the current budget.

Future Implications

As per the Ten Year Plan proposal with an acknowledgement that any changes can be adjusted into the Ten Year Plan three year review in 2012. There is the possibility of increased budget requirements due to costs associated with removing mangroves and other harbour wide activities.'

Ten Year / Annual Plan Implications

As above

Simon Stokes

On behalf of the Ohiwa Harbour Strategy Coordination Group

9 March 2011

Appendix

Updated actions in the Ohiwa Harbour Strategy (by theme): February 2011

The actions listed below are in order of theme which was re-assessed. The 'Suggested Lead Agency' as per the title are only suggestions.

Reference in Strategy	Action	Suggested Lead Agency	Others involved	Status of action as at February 2011
Health of the Estuary				
7.3.1	Managing earthworks within the catchment	Bay of Plenty of Plenty Regional Council, Ōpōtiki and Whakatāne District Councils		Implementation of current rules in all relevant planning documents has occurred. Status of earthworks in the new Whakatāne District plan and 2 nd version Bay of Plenty of Plenty Regional Council Regional Policy Statement?
7.3.2	See 13.3.4			
7.3.3	Nutrient Budgeting Information	Bay of Plenty of Plenty Regional Council Land Management)	Territorial Authorities, Federated Farmers	All dairy farmers supplying Fonterra have a nutrient budget. A nationally focused project is underway to streamline nutrient management planning
7.3.4	Advice on Shellfish Risks	To be discussed with other councils to determine who should (with Ministry of Health) take the lead on this project. Bay of Plenty Regional Council (Water Management) to provide monitoring data.		n/a
7.3.5	Stop Contamination of Urban Stormwater	Ōpōtiki and Whakatāne District Councils		Still to be reviewed and addressed

7.3.6	Management of Mangroves	Bay of Plenty Regional Council (Land Management)	Territorial Authorities, Ministry of Fisheries, Department of Conservation, Iwi, Estuary Care groups	Consent granted to Upokorehe and now the focus is mangrove removal
Kaimoana				
8.3.1	Advocacy on Fishing Issues	To be discussed with partners to who would like to take lead.		Hui is to be held with all partners on marine issues in April/May led by BOPRC
8.3.2	Māhinga Mataitai Status for Ohiwa Harbour	Local iwi	Ministry of Fisheries	Ngati Awa leading this action. Rohe moana still has to be established
Kaitiakitanga				
9.3.5 and 9.3.1	Add Kaitiakitanga into the Community's View of Harbour Management and developing an Iwi Planning Document for Ohiwa Harbour	To be discussed with partners to who would like to take lead.		All Iwi have contributed to completed document; Te Kete Kai a Te Tohu Mohukihuku mo te Umu Taonoa a Tairongo. Next step is document acknowledgement
9.3.2	Whakatohea Review 'Tawharau o Nga Hapu o Whakatohea'	Whakatohea – (Timeframe to be determined by Whakatohea.)	Councils to assist.	Whakatōhea looking into this action
9.3.3	Identify Ohiwa Harbour's Cultural Heritage	Local iwi	Partner Councils, New Zealand Historic Places Trust (NZHPT).	Underway with Upokorehe, Ngāi Tūhoe, and Whakatōhea. Ngāti Awa has already identified their heritage
9.3.4	Develop Protocols with Statutory Agencies	Local iwi	Partner Councils	Consultants report has been completed and is being implemented with regards to this action

Recreation opportunities				
10.3.1	Consider Opportunities to Obtain Harbour Access	Territorial authorities	Bay of Plenty Regional Council, DoC, iwi, landowners, developers	Nothing underway at present
10.3.2	Clarify the Status of Public Land	To be discussed with other councils to see if they would like to take lead.		Action is on hold
10.3.3	Develop Reserves Vision for Ohiwa Harbour	Territorial authorities	Bay of Plenty Regional Council, DOC, iwi, landowners	Still to be reviewed and addressed
10.3.4	Enhance Ohope Spit Harbour Edge Walkway	Whakatane District Council	DoC, landowners	Still to be addressed at this location but progress has been made at Ohiwa
10.3.5	Assess Public Camping Facilities	To be discussed with other councils to see if they would like to take lead.		WDC/ODC looking into this action
10.3.6	Investigate development of Regional Parks	Bay of Plenty Regional Council (Land Management) Note – Six months timeframe is for initial assessment only and is in progress.)	Strategy partners, landowners, DoC	Onekawa Te Mawhai site is now entering a phase where development of a long term management plan occurs. Several hui have been held to keep stakeholders informed, plus there has been an increase in operational activity
10.3.7	Monitoring Recreation Activities	Bay of Plenty Regional Council (Harbourmaster) for water related activities, district councils for land-based activities.		Water activities are monitored annually for the Ōhiwa Harbour by BOPRC honorary wardens and this report will be tabled at a hui in April/May.
10.3.8	Review Bylaws Relating to Higher Impact Activities	Territorial Authorities	Iwi, DoC	Consultants report has been completed and is being implemented with regards to this action

10.3.9	Develop Policy for Controlling Vehicles on Tidal Flats and Beaches	Ōpōtiki and Whakatāne District Councils		Consultants report has been completed and is being implemented with regards to this action
10.3.10	Promote Harbour Wardens, Fisheries Officers and Kaitiaki	Bay of Plenty Regional Council (Water Management)	Ministry of Fisheries, Iwi	Hui is to be held with all partners on marine issues in April/May led by BOPRC
Managing development pressure				
11.3.1	Understand Future Residential Development	<i>Territorial authorities</i>	Bay of Plenty Regional Council, iwi, landowners	WDC is doing some analysis work on this action for their district currently under the district Plan review
11.3.2	Review Resource Management Protocols	Bay of Plenty Regional Council (Sustainable Development)	Territorial authorities, iwi, developers	Consultants report has been completed and is being implemented with regards to this action
11.3.3	Evaluate Plans to Protect Character and Estuarine Health of Ohiwa	To be discussed with other councils to see if they would like to take lead. Bay of Plenty Regional Council (Planning Frameworks)		Consultants report has been completed and is being implemented with regards to this action

Natural areas, plants, and animals				
12.3.1	See action 13.3.4			
12.3.2	Review Monitoring and Enforcement Regimes	To be discussed with other councils to see if they would like to take lead.		Consultants report has been completed and is being implemented with regards to this action
12.3.4	Develop an Understanding of Indigenous Fish Species	Bay of Plenty Regional Council (Water Management) in conjunction with DOC.		Completed Indigenous fish survey for the Ōhiwa catchment
12.3.3	Assess Ecological Quality of Ohiwa Harbour	To be discussed with Territorial Authorities and DOC as to who would like to take lead		Implementing recommendations
12.3.5	Protect Bird Habitat and Species	To be discussed with other Councils/DOC to see if they would like to take lead.		Ongoing through care group and environmental programme work – completed Ohiwa Harbour book on birds
12.3.6	Ramsar status for Ohiwa Harbour	Bay of Plenty Regional Council (Sustainable Development)	DOC, Territorial authorities, iwi.	OHIF has asked to have some more time to consider this proposal (September 1 st minutes)

A more informed harbour community				
13.3.1	Provide Coordinated Signs and Interpretive Material	To be discussed with other councils and organisations to see if they would like to take lead.		This action has had some assessment in the completed communication plan
13.3.2 and 13.3.3	Develop a Communication/Education Plan; also relates to action for website development action plan	Led by BOPRC with support from OHSCG	Territorial Authorities, DoC, iwi	Communication Plan completed and year 1 activities underway
13.3.4	Support the Work of Landowners and Community Groups Actions 12.3.1: Develop Incentives for Landowners and 7.3.2: Planting of unstable slopes also sit with this action	Bay of Plenty Regional Council (Land Management)		Continuing BOPRC support of the following groups in active plant and animal pest management, and revegetation <u>Estuary Care:</u> Nukuhou Saltmarsh – Uretara Island <u>Coast Care:</u> Ohiwa <u>Land Care:</u> Paparoa Road, Ohakana Island, Te Motu Island, Ohiwa Reserve
13.3.5	Review Community Suggestions	Bay of Plenty Regional Council to lead but all partners to assess and potentially implement		Completed walkway from Ohiwa to Loop Road – by ODC

File Reference: 2.00019
Significance of Decision: Receives Only - No Decisions



TE RUNANGA O NGATI AWA

Report To: Ohiwa Harbour Implementation Forum
Meeting Date: 21 March 2011
Report From: Beverly Hughes, Environment Manager, Te Rununga o Ngati Awa

Ohiwa – A Co-operative Approach to Kaitiakitanga

Executive Summary

The purpose of this report is to provide feedback commentary from the four Iwi partners of the Ohiwa Harbour Strategy, with regards to their perspective on the progress towards a co-operative approach to kaitiakitanga for the Ohiwa Harbour from within the Ōhiwa Harbour Strategy. A presentation will be provided at the meeting..

1 Recommendations

That the Ohiwa Harbour Implementation Forum under its delegated authority:

1 Receives the report, Ohiwa – A Co-operative Approach to Kaitiakitanga.

2 Iwi Co-operation and participation

Many organisations are working well together to ensure that the special attributes of Ohiwa Harbour endure and are enhanced for future generations to enjoy. Iwi are part of that group of organisations that are working to achieve these ends. Upokorehe, Whakatohea, Ngati Awa and Tuhoe joined in the development of an integrated management strategy for Ohiwa Harbour in May 2002.

Since that time Upokorehe, Whakatohea, Tuhoe and Ngati Awa have consistently participated in the development of planning instruments including:

- Ohiwa Harbour Scoping Report
- Draft Ohiwa Harbour Integrated Management Strategy
- Proposed Ohiwa Harbour Integrated Management Strategy
- Draft 'Providing for Kaitiakitanga in the Ohiwa Harbour Iwi Management Plan' – a plenary iwi management plan

Iwi have also participated in:

- Hearings relevant to the Ohiwa Harbour Strategy
- Establishment of the Ohiwa Harbour Strategy Co-ordination Group (OHSCG)

- Establishment of the Ohiwa Harbour Implementation Forum

We also undertake:

- Plenary iwi site visits at lands proposed for change or development, sometimes alongside statutory staff
- Conferences at which the integrated and co-operative approach used in the Ohiwa Harbour Strategy has been promulgated
- Submissions to planning instruments at regional and district councils.

Examples of Co-operative Approach to Kaitiakitanga

There has been an excellent working relationship developed between iwi and staff in statutory agencies. This excellent working relationship between statutory organisations is being enhanced by the co-operative working approach, which is yielding more efficient and effective results in the Ohiwa environment as demonstrated by the following examples:

- Pan-tribal site visit and assessment of proposed retirement of Renouf/Albrecht riparian margins ensures retirement plan is fully supported by tangata whenua.
- The very excellent process undertaken by Upokorehe and Mr Tim Senior (Biosecurity Officer, Bay of Plenty Regional Council Land Resources (Eastern)) in the development of the application for resource consent for the active management of mangroves in Ohiwa Harbour.
- The excellent works undertaken in the development of the Ohiwa Spit Walkway by Upokorehe and Mr Mike Houghton of the Opotiki District Council.
- The Land Use Capability Study of Ngati Awa Farm which was contributed by Land Resources (Eastern) at the Bay of Plenty Regional Council which is informing the Ngati Awa Alternative Land Use project currently underway within Te Runanga o Ngati Awa
- Works underway in identifying sites of cultural significance to Whakatohea, Tuhoe and Ngati Awa within the Ohiwa Harbour margins so as to inform district and regional plans.

3 Summary

There is a growing realization in the Ohiwa community that enabling iwi and hapu contributions to statutory planning and decision-making adds value to the change management decision-making of statutory organisations.

For example pan-tribal site visits and co-operative assessments of cultural impacts of the proposed Ohiwa Cove subdivision yielded recommended consent conditions and advice notes to assist decision-making, and the return of a culturally significant pa to Upokorehe hapu with the blessing of neighbour iwi.

Focused and meaningful consultation with tangata whenua is yielding outcomes that contribute to the sustainable development of the harbour environment, thus benefiting all New Zealanders.

By continuing to build on this co-operative and integrated approach, statutory organisations will continue to foster the capacity of Maori to contribute to decision-

making that benefits all people in the community without relying on tangata whenua to provide that advice at their cost.

4 **Financial Implications**

Current Budget

This is an information only report therefore there are no financial implications..

Future Implications

This is an information only report therefore there are no financial implications.

Ten Year / Annual Plan Implications

This is an information only report therefore there are no Ten Year / Annual Plan implications.

Beverly Hughes
Environment Manager
Te Rununga o Ngati Awa

On behalf of Ngati Awa, Upokorehe, Ngai Tuhoe and Whakatohea

9 March 2011

File Reference: 2.00019
Significance of Decision: Receives Only - No Decisions



Report To: Ohiwa Harbour Implementation Forum
Meeting Date: 21 March 2011
Report From: Simon Stokes, Manager Land Resources (Eastern)

Ohiwa Harbour Strategy Action Report

Executive Summary

The purpose of this report is to provide an overview of the main points from the action report with recommendations to the Ohiwa Harbour Strategy Implementation Forum from the Ohiwa Harbour Strategy Coordination Group.

The Ohiwa Harbour Strategy Coordination Group commissioned a project to assess and report on four of those actions, to be developed into the Ohiwa Harbour Strategy Action Report. The Ohiwa Harbour Strategy Action Report has been completed and was reported to the Ohiwa Harbour Strategy Coordination Group in December 2010. .

1 Recommendations

That the Ohiwa Harbour Implementation Forum under its delegated authority:

- 1 Receives the report, Ohiwa Harbour Strategy Action Report.**
- 2 Approves the implementation of the recommendations contained within the Ohiwa Harbour Strategy Action report by the Ohiwa Harbour Strategy Coordination Group.**

2 Background

The Ohiwa Harbour Strategy is a non-statutory document but promotes actions for partner agencies to achieve as they manage the natural resources of the harbour and its catchment. Implementation of the Strategy's actions has been underway since its final approval in June 2008.

The Ohiwa Harbour Strategy Action Report investigates progress on four key actions from the strategy.

As background, a progress update was reported to the Ohiwa Harbour Strategy Implementation Forum at its meeting on 29 April 2010.

The Ohiwa Harbour Strategy Action Report was completed in November 2010 and reported to the Ohiwa Harbour Strategy Coordination Group (OHSCG) at their meeting on 10 December 2010.

Comments and recommendations from the minutes of the Ohiwa Harbour Strategy Coordination Group meeting are added to each section for the information of Ohiwa Harbour Implementation Forum (OHIF) members.

3 Overview of Ohiwa Harbour Strategy Action Report

The Ohiwa Harbour Strategy was formally approved by the parties in June 2008. It covers the Ohiwa Harbour and the land catchment area that drains into it.

The Strategy is a non-statutory document and Bay of Plenty Regional Council (BOPRC) provides its administration.

The Strategy sets out a vision for the harbour, identifies key community values and aspirations, identifies key issues and recommends actions to achieve these.

This report evaluates progress on four of the actions in the Strategy. Each action has been assessed and the following is a summary of the current status of issues:

4 Bylaws Relating to Higher Impact Activities

4.1 Overview of Bylaws

There has been good positive progress on getting beach and marine bylaws operational however some opportunities to integrate policy in the last round of bylaw reviews have been missed. There are some identified practical and operational issues that need an integrated on-the-ground management approach by the parties. This could be achieved by the creation of an Ohiwa Harbour Wardens Forum representing all the agencies and the iwi partners and run under OHSCG. The Forum would be made responsible for integrating operational effort and achieving consistency throughout the harbour and could also be delegated to implement some of the operational recommendations in 3.3 of this report.

Summary

1. Action 10.3.8 [Bylaws] associates strongly to actions 10.3.9 [Vehicles on Beaches] and 10.3.10 [Harbour Wardens and Honorary Fisheries Officers.]
2. Opotiki District Council (ODC) has a good active programme to promote and implement its Beach Bylaw.
3. Whakatane District Council (WDC) has reviewed its bylaws (Beach Bylaw Ch13) and is working on implementation.
4. BOPRC Harbour Wardens successfully operating in Ohiwa under the Bay of Plenty Regional Council Navigation and Safety Bylaws 2004.
5. Iwi willing to assist with Bylaw implementation; monitoring and enforcement.

4.2 Action Report Recommendations on Bylaws

Ohiwa Harbour Strategy Coordination Group adopted the recommendations on Bylaws at their meeting in December 2010 and requested that the recommendations and actions be reported to the Ohiwa Harbour Implementation Forum for their consideration.

1. OHSCG recommend to their governing organisations that an Ohiwa Harbour Wardens Forum be established to help integrate Harbour Wardens, Beach Bylaw Wardens and Fisheries Wardens and to optimise manpower resources, reduce costs, improve effectiveness. Timeframe: before July 2011.
2. The Ohiwa Harbour Wardens Forum would be overseen by the Ohiwa Harbour Strategy Overseer and report to OHSCG. Timeframe: before July 2011.
3. OHSCG delegate to a small subcommittee the task of working with the Harbour Wardens Forum to develop a common bylaw policy base for the councils to consider when next they review their bylaws. Timeframe: before July 2012.
4. Early attention is needed to remedy the other issues outlined in 4.2 of the Ohiwa Harbour Strategy Action Report. Timeframe: before December 2010.

4.3 Recommendation to OHIF

- 1 The Ohiwa Harbour Strategy Coordination Group recommends that the Ohiwa Harbour Implementation Forum endorse the actions on bylaws and promote them to their respective councils and committees.

5 Review Resource Management Protocols

Overview of Resource Management Protocols

While there are protocols in place and working they tend to be set up as operationally exclusive documents and not sensitive or designed to inform or invite feedback to all the Ohiwa Harbour partners. In regards resource consent processing, there are highly constraining (tight RMA response requirement) timeframes applying that drive this approach. There are however informal protocols that are evolving to fill the gaps and the territorial authorities are encouraging applicants to consult with affected parties, particularly iwi, before lodging applications to avoid holdups further along the process. Having systems to streamline getting information out to all the affected parties as well as fostering capacity for iwi partners will assist getting timely and well considered feedback.

OHSCG requested that an evaluation be done to look at the Regional Policy Statement (RPS) to make sure that the current review of RPS is supportive of the Ohiwa Harbour management structure; with OHSCG and OHIF continuing and being supported by a combined effort between BOPRC and the DC's. This has been completed and overall the RPS gives good support of the Ohiwa Harbour Strategy and the continuation of the Ohiwa Harbour Strategy Coordination Group and the Ohiwa Harbour Implementation Forum to oversee the strategy actions in the Ohiwa Harbour.

Summary

1. Resource Management Protocols are operational agreements between authorities on how, when and where information about specified council processes is

communicated between the authorities and what the expected outcomes and feedbacks will be.

2. Resource Management Protocols affecting the Ohiwa Harbour exist for regional and district plans and consents, however implementation could be improved.
3. Some parties do not feel included in the operational agreements, and are not signatories to protocols.
4. Reciprocity and triggers in regards existing protocols need review.
5. Ngati Awa Statutory Acknowledgement requirements are still not as well adopted as expected.
6. RMA timeframe requirements can reduce participation and increase tension particularly about consent matters.

5.1 Action Report Recommendations on Resource Management Protocols

Ohiwa Harbour Strategy Coordination Group adopted the following recommendations on Resource Management Protocols at their meeting in December 2010 and requested that the recommendations and actions be reported to the Ohiwa Harbour Implementation Forum for their consideration.

1. OHSCG needs to encourage the councils to update their procedural processes and widen their protocols so that opportunities are made to include parties in efficient decision making processes, particularly in regards the granting and monitoring of resource consents. Timeframe: before December 2011.
2. The councils must foster and encourage Iwi Environmental Committees within their rohe and formalise their advisory status. Timeframe: ongoing.

5.2 Recommendation to OHIF

1. The Ohiwa Harbour Strategy Coordination Group recommends that the Ohiwa Harbour Implementation Forum endorse the actions on Resource Management Protocols and promote them to their respective councils and committees.

6 Evaluate [Regional and District] Plans to Protect Character and Estuarine Health of Ōhiwa

6.1 Overview of Protecting the Character and Estuarine Health

Each of the territorial authorities and the other Ohiwa Harbour partners has their own set of strategic and policy documents to manage their bit of the Ohiwa Harbour. Although some joint effort in the form of coordinated research has been achieved, and a high level of willingness to explore an integrated plan policy structure for Ohiwa has been stated by all, to date the vision has not been achieved. The Ohiwa Harbour Strategy itself is a start and there are upcoming opportunities for integrated and common agreed policy to be developed (the reviews of the Whakatane District Council District Plan, the RPS, and the upcoming review of the Regional Coastal Environment Plan). A dedicated group of policy experts are needed to drive the vision of an integrated plan policy structure for Ohiwa. The concept of a Special Ohiwa Harbour Planning Zone with policy binding on all parties needs further research.

Summary

1. High level of willingness to explore an integrated plan policy structure for Ohiwa between parties to 'Protect the Character and Estuarine Health of Ohiwa Harbour'.
2. Some plan policy integration already but it is not consistent.
3. Special Ohiwa Harbour Planning Zone promoted for WDC District Plan review.
4. Opportunities with the reviews of the Whakatane District Council District Plan, the RPS, the upcoming review of the Regional Coastal Environment Plan.
5. Iwi Management Plans and other iwi planning documents to be taken into account.

6.2 Action Report Recommendations on Protecting the Character and Estuarine Health

Ohiwa Harbour Strategy Coordination Group adopted the following recommendations on Protecting the Character and Estuarine Health of Ōhiwa at their meeting in December 2010 and requested that the recommendations and actions be reported to the Ohiwa Harbour Implementation Forum for their consideration.

1. OHSCG to put an urgent proposal through OHIF to all the authorities around the Ohiwa Harbour that a Special Ohiwa Harbour Planning Zone Forum resourced by the councils be established. Timeframe: before December 2010.

Ohiwa Harbour Strategy Coordination Group asked Whakatane District Council to coordinate the establishment of an Ohiwa Harbour Planning Zone Forum as part of their review of the Whakatane District Plan and discuss what it would contain and look like. Whakatane District Council (WDC) representative Tony Bullard reported that Boffa Miskell has done an analysis of the Ohiwa Harbour from a landscape perspective which could form the basis for an Ohiwa Harbour Zone. Boffa Miskell will also be looking at the types of activities would be permitted e.g. buildings, earthworks and forestry. The WDC investigation would appear to only cover that area under WDC jurisdiction.

WDC held the Whakatane District Plan Review Hui with iwi on 8 February at which many issues relating to the Ohiwa Harbour were discussed including heritage and landscape matters. In regards planning policy, WDC indicate that possible controls within the WDC Ohiwa Zone are: lot sizes proposed to increase from 2ha to 4 Ha, controls on structures on or near ridge lines and within 100m of the harbours edge, controls on plantation forestry and subdivision to become discretionary.

2. The Forum would be led Whakatane District Council and Ōpōtiki District Council to review the current district and regional regulatory framework to achieve a common vision that will lead to a Special Ohiwa Harbour Planning Zone with an integrated plan policy structure sensitive to the requirements of the harbour. Timeframe: before October 2011.

6.3 Recommendations to OHIF

- 1 The Ohiwa Harbour Strategy Coordination Group recommends that the Ohiwa Harbour Implementation Forum endorse the recommendations on Protecting

the Character and Estuarine Health of Ōhiwa and promote them to their respective councils and committees.

- 2 The Ohiwa Harbour Strategy Coordination Group recommends that the Ohiwa Harbour Implementation Forum endorse Whakatane District Council as the lead agency to establish a forum to develop a Ohiwa Harbour Planning Zone with an integrated plan policy structure sensitive to the requirements of the whole harbour.

7 Review Monitoring and Enforcement Regimes

7.1 Overview of Monitoring and Enforcement Regimes

There needs to be a dedicated coordinator/overview person for Ohiwa Harbour. They would be the one-stop-go-to person, coordinating and encouraging effort on all harbour initiatives and reporting to the OHSCG through an appropriate manager. The reason is that while there is individual and some combined effort going on there is no overall binding effort pulling the pieces together. OHSCG and OHIF push things along but on a two or three month basis and then only in their respective recommending and reporting back roles.

The monitoring and enforcement feedback loops already in place for consent and planning compliance requirements are working well.

Summary

1. Monitoring and Enforcement Regimes are generally operating well in Ohiwa.
2. Some enforcement and jurisdiction issues identified.
3. Information flows interagency and to public could be better.
4. Water quality information good.
5. Information from Ministry of Fisheries not easy to access.

7.2 Action Report Recommendations on Monitoring and Enforcement Regimes

Ohiwa Harbour Strategy Coordination Group adopted the following recommendations on the Monitoring and Enforcement Regimes of Ōhiwa at their meeting in December 2010 and requested that the recommendations and actions be reported to the Ohiwa Harbour Implementation Forum for their consideration.

1. OHSCG commission a business case for the appointment of a dedicated person (Ohiwa Harbour Strategy Officer) charged with overseeing Ohiwa Harbour Strategy action requirements by the councils (with shared cost) and other parties and undertake other work to achieve the vision for the Ohiwa. Timeframe: before December 2010.
2. The councils are encouraged to continue with current levels of monitoring and enforcement but improve information distribution. Timeframe: ongoing.

3. OHSCG to be provided with an annual monitoring and enforcement report covering the Ohiwa Harbour to assist with its overview and coordination role. Timeframe: Next OHSCG Meeting then each December.
4. OHSCG invite appropriate council enforcement officers to one of its meetings to present on their work and discuss how the community can best help and how best to distribute relevant information. Timeframe: Next OHSCG Meeting.

7.3 **Recommendations to OHIF**

1. The Ohiwa Harbour Strategy Coordination Group recommends that the Ohiwa Harbour Implementation Forum endorse recommendations 2, 3 and 4 on the Monitoring and Enforcement Regimes of Ōhiwa and promote them to their respective councils and committees.
2. Ohiwa Harbour Strategy Coordination Group requests that in regards to recommendation 1, the business case for the appointment of a dedicated person (Ohiwa Harbour Strategy Officer) charged with overseeing Ohiwa Harbour Strategy action requirements by the councils are investigated to administer the needs of Ohiwa Harbour, Ohiwa Harbour Strategy Coordination Group and the Ohiwa Harbour Implementation Forum.

8 **Financial Implications**

Current Budget

There is no implication to the current.

Future Implications

There is no future implication to the financial situation or Ten Year Plan at this stage.

Ten Year / Annual Plan Implications

There is no future implication to the Annual Plan or Ten Year Plan at this stage.

John Whale
Contractor

On behalf of the Ohiwa Harbour Strategy Coordination Group

11 March 2011

File Reference: 2.00019
Significance of Decision: Receives Only - No Decisions



Report To: Ohiwa Harbour Implementation Forum
Meeting Date: 21 March 2011
Report From: Simon Stokes, Manager Land Resources (Eastern)

Update on operational activity at the Onekawa Te Mawhai properties

Executive Summary

The purpose of this report is to update the representatives of the Ohiwa Harbour Implementation Forum on the operational management of the land purchased by the Bay of Plenty Regional Council and located at the Ōhiwa headland..

1 Recommendations

That the Ohiwa Harbour Implementation Forum under its delegated authority:

- 1 Receives the report, Update on operational activity at the Onekawa Te Mawhai properties.**

2 Background

In August 2010 the Bay of Plenty Regional Council purchased land from Mrs P Tuck allocated on the Ōhiwa Headland. It has since become locally called the Onekawa Te Mawhai property. This property purchase adds to the 2004 purchase of the Gawn property which is adjacent. Combined, the 26.8 hectares is valued for its rich Māori cultural history, significant archaeological features and landscape views from Kohi Point across the Ōhiwa Harbour to the East Cape.

The 20.5 ha ex-Gawn property has a whole of property Queen Elizabeth II Trust (QEII) covenant that protects the pohutukawa escarpment and bush clad gullies on the property. The ex-Tuck property currently has no current formal or statutory protection status.

The property is located within the rohe of Upokorehe and of Whakatohea.

The local territorial authority is Ōpōtiki District Council.

The land has been purchased for the Community of the Bay of Plenty to enjoy passive recreational activities and protect the significant archaeological and cultural nature of the property. In addition, the properties have significant natural values including Coastal pohutukawa forest.

3 Operational management

The following interim operational management actions have been developed since the Council purchased the properties, until such a time as the council and stakeholders have developed a long term management strategy. They are derived from an interim operational management plan. The actions are provided under a number of key management themes. It should be acknowledged that these themes are interrelated.

Interim management actions for the park will focus on enhancing the visitor experience, maintaining the integrity of the cultural and archaeological features and addressing threats to native biodiversity.

The management themes for the property come under the headings:

1. Cultural heritage;
2. Archaeology;
3. Access, recreation and visitor management;
4. Biodiversity;
5. Farm management;
6. Infrastructure asset management; and
7. Stakeholder engagement.

3.1 Cultural heritage

Tangata whenua are being actively engaged in the management of the property as it is a significant cultural site

Actions:

- Establish management protocols in consultation with tangata whenua including input into significant management decisions, the discovery, reburial or removal of taonga and koiwi, cultural harvesting, identification, management and interpretation of culturally significant sites.
- Prohibit the disposal or burying of ashes, body parts, placentas and still-born infants within the property boundaries. This is to protect property users and recognise the importance of traditional uses of resources on the property (such as for medicinal purposes).

3.2 Archaeology

Archaeological features within the property are to be protected by complying with the Historic Places Act 1993 and sustainable land management practices in consultation with the New Zealand Historic Places Trust (NZHPT), tangata whenua and farm graziers.

Actions:

1. Complete an archaeological survey for the ex-Tuck property to complement the existing ex-Gawn property archaeological survey.

2. Implement the recommendations from the archaeological survey for the property.
 - Engage with tangata whenua, NZHPT and farm graziers on archaeological site management during the:
 - Review of the grazing regime and licence;
 - Assessment of pest animal impacts on archaeological features;
 - Assessment of fence locations;
 - Assessment of effects of any specimen trees on pā or archaeological features and any associated risks; and
 - Approvals for any works required under the Historic Places Act.
3. Establish photo-points for monitoring the effects of visitor access to the property on archaeological sites.
4. Assess fence locations and relocate or remove if required to reduce impacts on heritage features and visual quality of the landscape.

3.3 Access, recreation and visitor management

Public access to the property is provided via a marked loop walking track from Bryans Beach to the summit of the property. There is a small car park at the entrance to the property off Bryans Road. Public vehicles are currently excluded from the property. Opportunities exist for the public to park in the Bryans Road car park, walk through the property to the summit, or to Ōhiwa Harbour through the Opotiki District Council Scenic Reserve and return along the beach; a walk of approximately 1 hour.

Actions:

- Upgrade signage.
- Install a temporary toilet facility.
- Protect significant ridgelines, sight lines and vistas of the Pa sites and visually significant landforms from development, structures or management practices that could compromise their visual amenity.
- Install a wider network of walking tracks on the property that joins to the Opotiki District Council Scenic Reserve.

3.4 Biodiversity

Protect and/or enhance native habitats on the property where practicable. Notification of any pest control programmes using baits will be provided by means of signage, public notices placed in the Beacon and the Ōpōtiki News and a flyer sent to all homes at Ōhiwa, Bryans Beach and Ruatuna Road.

Actions:

- Survey existing native forest remnants within the property to determine operational management requirements.

- Develop a Biodiversity Restoration Plan showing extent of areas to be fenced from stock and/or replanted. Include:
 - indicative boundaries of replanting areas, fencing requirements and costs;
 - estimated areas, plant numbers and costs; and
 - priorities for biodiversity protection.
- Contract supply of eco-sourced plants from Opotiki and Taneatua Ecological districts (if required).
- Implement the Biodiversity Restoration Plan.
- Monitor the effects of pest plants and animals on the property, including invasive species such as gorse and Japanese honeysuckle.
- Undertake seasonal pest plant and animal control programmes, or one-off control when needed.
- Control pest plants and animals over the property including priority archaeological and revegetation sites.
- Manage shelter belts and specimen trees. Commission an annual arboricultural inspection of exotic trees.
- Manage exotic vegetation for public safety, archaeological protection and preservation of sightlines including on driveway.

3.5 Farm management

The pastoral areas on the property will be grazed to maintain a good healthy grass sward on archaeological features as recommended in the archaeological survey; Onekawa Property Archaeological Site Survey and Management Recommendations, Lynda Walter, In-Situ Heritage, June 2010.

Farm buildings, farm structures, service roads and access routes will be provided for the purposes of land management within the property that provides for efficient use of the land but does not compromise the property amenity or the environmental, cultural or heritage values of the property.

Actions:

- The landscape and views of and from the property should be protected.
- Review the ex-Tuck property grazing agreement.
- Review the grazing regime and licence in consultation with grazier to prevent grazing from compromising values of the property. Consider amending: grazing areas and regimes.
- Remove redundant facilities and structures including stock yards adjacent to the former Tuck house and redundant fence lines.

- Assess fencing condition and patterns in terms of farming needs, revegetation requirements potential damage to archaeological sites and impacts on landscape.
- Assess water supply requirements in relation to grazing, revegetation and costs.

3.6 Health and safety

Property users should be able to enjoy the property in a manner that is safe, cognisant of the cultural, heritage and environmental values of the property and is considerate of other property users. The property could provide opportunities for public walking and passive recreation, as well as opportunities to learn about cultural and archaeological history in a natural setting.

Vehicle access to the property will be limited to authorised vehicles only, unless otherwise agreed to by the Bay of Plenty Regional Council.

Actions:

- Prepare a Site Hazard Register and make available to property users and contractors as appropriate.
- Complete an overall Health and Safety Plan for the property.
- Update signage to include health and safety notifications for the public.

3.7 Infrastructure asset management

Provide and maintain buildings, structures and assets where they are necessary for operational management and do not compromise property values. Action and process should be consistent with current Council Asset Management Planning.

Actions:

- Maintain dwelling assets to the appropriate standard for tenant occupancy.
- Identify, prioritise and plan major maintenance and upgrading of farm roads, buildings and structures, fences and water supply.
- Continue ongoing driveway, water table and curtilage maintenance.
- Include the property in the Council's Asset Management Plan. This is a medium term goal and is dependent on Council's property management directive.

3.8 Stakeholder engagement

Engage with the community, iwi, NZHPT and interested stakeholders regarding the Onekawa Te Mawhai property.

Actions:

- Develop a Communications and Engagement Plan for the property, involving community, iwi, NZHPT and interested stakeholders.
- Implement the Communications and Engagement Plan and review the Plan following Council decision on the management of the property.

4 Summary of Actions to date

The following is a summary list of actions completed to date since December 2010;

- Thistle spraying programme (thistles were so long last year that you couldn't walk through them)
- Extensive gorse spraying programme
- Established walking track through Pohutukawa/Puriri paddock.
- Installed temporary wooden boardwalks.
- Replaced or repaired gates and latches where public access is required
- Established mown walkways by filling holes and using ride on mower.
- Changed grazing regime to remove pressure off vulnerable archaeological features.
- New signage at various locations
- Put in more track markers (knocked over by stock who rub on marker stakes, we cant put up bigger posts until we obtain archaeological authority)
- Cleared vegetation underneath telephone and power lines
- Removed large nuisance trees near barns and felled all dead standing pine trees on Tuck property and neighbouring Ōpōtiki District Council Reserve.
- Repairs to Tuck dwelling as per tenancy agreement requirements
- New tenancy agreement with tenant
- Only one grazier on the property now
- Walkover of reserve area below park to ensure woolly knight shade is in check
- Ongoing track verge maintenance and fence repairs
- Installation of portaloos over the busy Christmas period
- Water supply repairs
- Liaise with Upokorehe over signage and archaeological authority
- Liaise with Upokorehe with regard to interpretation panels telling the story of the site

There has also been two hui held with stakeholders to keep everybody well informed about progress.

3 Financial Implications

Current Budget

There are no implications as per the current budget

Future Implications

There are no implications as per the current budget

Ten Year / Annual Plan Implications

There are no implications as per the Annual or Ten Year Plan

Simon Stokes
Manager Land Resources (Eastern)

10 March 2011

File Reference: 2.00019
Significance of Decision: Receives Only - No Decisions



Report To: Ohiwa Harbour Implementation Forum
Meeting Date: 21 March 2011
Report From: Simon Stokes, Manager Land Resources (Eastern)

Update on Ohiwa Harbour Mangrove Management

Executive Summary

The Ōhiwa Harbour Catchment Sediment and Mangrove plan provided a framework for the management of mangroves. Subsequently the Upokorehe hapu applied for, and were granted, a resource consent to manage the further spread of mangroves. The consent allows Upokorehe to remove mangroves from the area outside a defined boundary line. The removal will be carried out by Upokorehe, using non-mechanical methods, followed by simple monitoring techniques. Upokorehe are currently planning this work with the support of Bay of Plenty Regional Council staff.

1 Recommendations

That the Ohiwa Harbour Implementation Forum under its delegated authority:

- 1 Receives the report, Update on Ohiwa Harbour Mangrove Management.**

2 Background

The Ōhiwa Harbour Catchment Sediment and Mangrove Management Plan was completed in late 2009. This plan provided a set of recommendations to minimise the deposition of sediment and nutrients into the harbour and suggested an approach for the management of mangroves. Over the last year or so, informal discussions have taken place with many individuals, groups and agencies with an interest in the harbour to achieve consensus for an acceptable and pragmatic approach to mangrove management based on this report. It was seen as important that the majority of the local community supported this approach. The Department of Conservation support was a requirement to allow any management occur. Upokorehe, as the traditional kaitiaki of the harbour expressed interest in applying for a resource consent to remove mangroves. With the assistance of Bay of Plenty Regional Council staff, they lodged a consent application in December 2011 which had written support from the Department of Conservation and Te Runanga o Ngāti Awa. The consent was granted by the Bay of Plenty Regional Council Regional Council on January 21. As the environmental effects were considered minor, notification was not required.

3 **Summary of the resource consent and conditions**

The consent allows Upokorehe to disturb, damage, and deposit mangrove material on, the foreshore and seabed of the Ōhiwa Harbour. Mangroves may be removed from the outside a defined removal boundary line that has been mapped. Two examples of this mapping are shown in appendix 1. These mangroves are mostly seedlings and outlying plants in the under 25% cover category. The intention is that, long term, the spread of mangroves will be held to the current distribution of mature, dense plants. There are three exceptions to this. Firstly an attempt will be made to leave small plants where they provide a corridor between clumps of mature plants to allow a corridor for the movement of banded rail. Secondly no plants will be removed from Department of Conservation reserves or from coastal habitat protection zones. Thirdly mangroves will be removed from the sides of four stream channels around Kutarere in an attempt to alleviate flooding in the township.

The removal work will be carried out by members of the Upokorehe hapū or must be supervised by them. This will allow other individuals and groups to be involved in removal work. They will use hand held tools only (this includes scrub bars). As re-colonisation occurs, the areas cleared will need to be revisited every few years. How often will only become clear as work proceeds.

Other aspects of the consent are as follows:

- Damage to adjacent saltmarsh vegetation will be avoided.
- Seedling plants will be left for tidal dispersal.
- Larger plants will be cut into smaller pieces and left for tidal dispersal.
- Explanatory signage will be erected at each removal site for the duration of the work.
- The regional council will be notified of planned 'working bee' days.
- Monitoring consists of recording by GPS the areas cleared and taking photographs.
- A brief annual report will be submitted to the Bay of Plenty Regional Council.
- Non compliance may result in enforcement action.
- The consent expires in 2020.

4 **Next steps**

The consent and its conditions has been discussed in detail at a recent Upokorehe hapū hui. They will nominate a project manager, muster a workforce and draw up a timetable and plan of operations for the first year. There is a possibility that members of a proposed community max project may help with some of the work.

Bay of Plenty Regional Council staff will support them in this work and liaise where appropriate with the rest of the harbour community. This work will need to ensure that the nature of the consent is clearly understood by all residents and will also provide a process for interested residents to become involved in the removal work under the umbrella of Upokorehe as the consent holder.

The regional council land resources section has covered the costs of the consent application. It will also cover the costs of providing the necessary tools and equipment to carry out the work. The council will not cover the labour costs; voluntary labour will be required. Bay of Plenty Regional Council staff will be available to assist Upokorehe in managing the project and help them to develop the capacity to manage the consent themselves long term.

5 Financial Implications

Current Budget

Funding as per the current Ten Year Plan.

Future Implications

Funding will be assessed as to the progress and development of the mangrove removal.

Ten Year / Annual Plan Implications

None.

Tim Senior
Biosecurity Officer

for Manager Land Resources (Eastern)

9 March 2011

Appendix



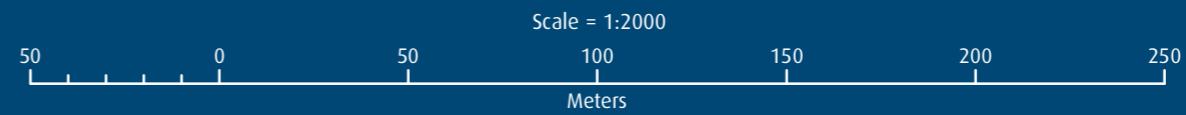
Legend

- Mangrove Removal Boundary
- Mangrove Ohiwa 2007**
- Percentage Cover**
- 100
- 99
- 74
- 49
- 24
- DOC Reserves
- CHPZ

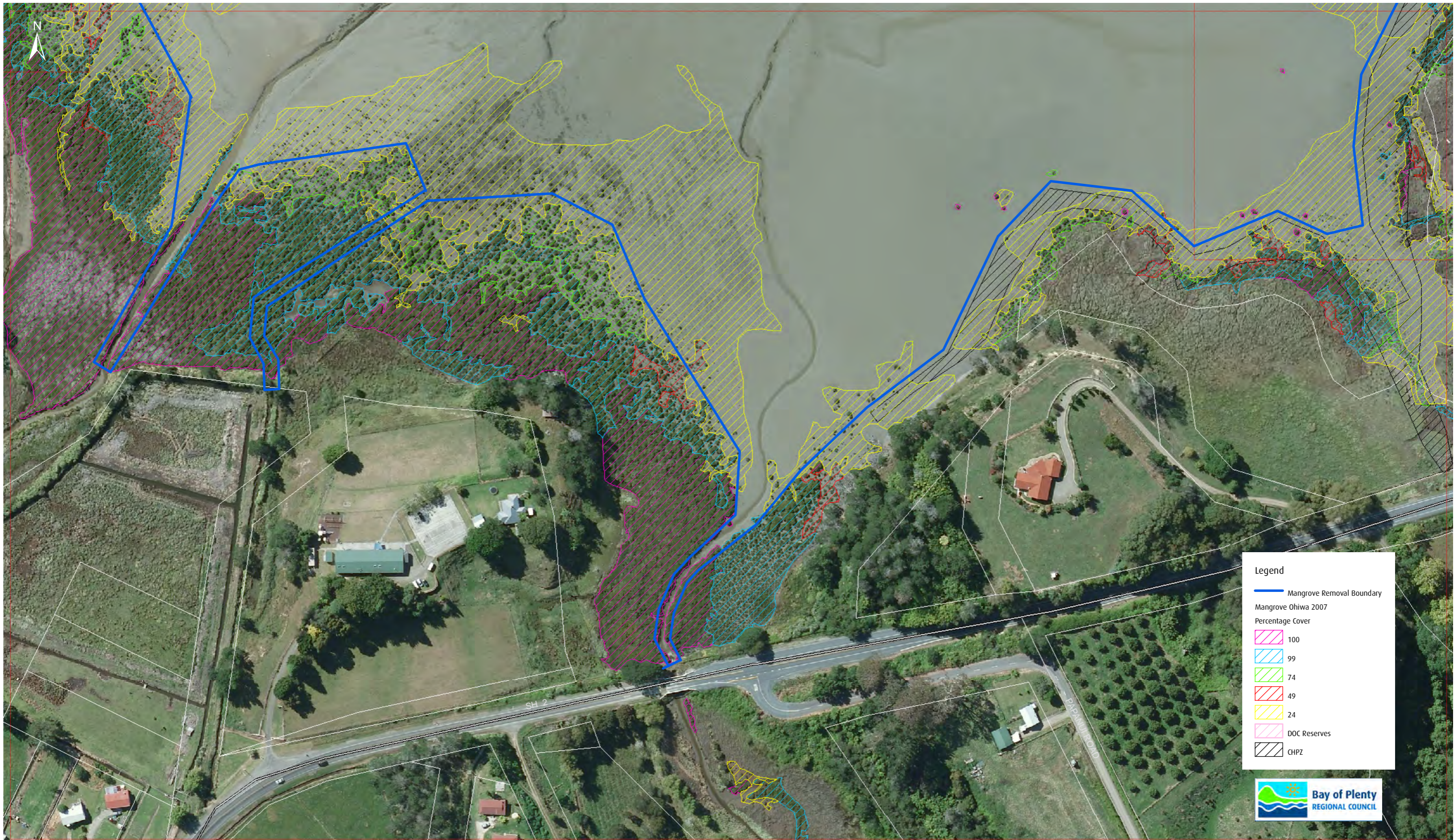


Ohiwa Mangrove Removal Area

Resource Consent Application
Sheet 17 of 80



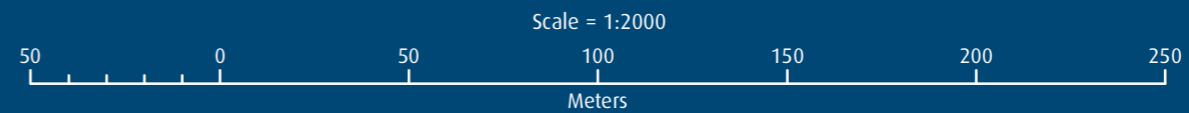
Appendix



Ohiwa Mangrove Removal Area

Resource Consent Application
Sheet 32 of 80

© The Bay of Plenty Regional Council
© Land Information New Zealand's Digital Cadastral Database (DCDB). CROWN COPYRIGHT RESERVED. Digital Licence No TL/ENV01/01



c2485 - December 2010

File Reference: 2.00019
Significance of Decision: Receives Only - No Decisions



Report To: Ohiwa Harbour Implementation Forum
Meeting Date: 21 March 2011
Report From: Simon Stokes, Manager Land Resources (Eastern)

Ohiwa Harbour Communications Plan update

Executive Summary

The Ōhiwa Harbour Strategy Communications Plan was produced in 2010 on behalf of the Ohiwa Harbour Strategy Co-ordination Group (OHSCG). The implementation of the actions set down in the plan for the 2010-2011 year is well underway and on target. Processes for internal communications between the strategy partners have been set up. The planned actions to assist with developing a more informed harbour community are also underway.

1 Recommendations

That the Ohiwa Harbour Implementation Forum under its delegated authority:

- 1 Receives the report, Ohiwa Harbour Communications Plan update.**

2 Background

The Ohiwa Harbour Strategy Communications Plan was produced collaboratively by a group of representatives from all the Strategy partners in March 2010. The broad aims of the Plan were firstly to ensure that communications between the partner agencies are as effective as possible and secondly to begin the implementation of section 13 of the Strategy, 'a more informed harbour community'. The Plan itself has already been received by the Ohiwa Harbour Implementation Forum at its May 2010 meeting. The implementation of the plan is being led by Bay of Plenty Regional Council staff, namely Tim Senior and Alexandra Grenfell.

3 Communications Plan Actions

Most of the actions set out by the Communications Plan for the 2010-2011 year have either been completed or are in progress. A summary of these actions is as follows:

- 1 Produce a rapid response contacts list of operational staff for partner organisations. This has been completed.
- 2 Prepare protocols for OHSCG site visits and publications. The aim of these was to provide a process to ensure that documentation and publications were agreed to by all the partners. These have been completed.
- 3 Produce a 'quick guide' to the communications plan. This summary of the plan has been produced.

- 4 Research stakeholders and residents attitudes and perceptions and produce a contacts list. The aim of this research is to assist with the production of an Ohiwa newsletter. We need to know who would like to know what about Ohiwa Harbour affairs and how they would like to be kept informed. This work is almost complete.
- 5 Produce a regular OHSCG e-newsletter to update the relevant staff of partner organisations with information about what is happening around the harbour. The first issue was produced late last year and the second is now being compiled.
- 6 Produce a newsletter for distribution to interested residents and stakeholders. This was originally planned for next year but has been brought forward, largely because of interest expressed in the idea by local residents, and the first is now being compiled.
- 7 Hold three monthly operational wananga. The aim of these wananga is for operational staff who work around the harbour to be able to collaborate, co-ordinate and prioritise their work, keep each other well informed and to have input into the actions of both their own and other agencies actions. The first of these has been held and was considered very productive.
- 8 Review and upgrade the Ohiwa Harbour content of the Bay of Plenty Regional Council website. This has been delayed by an upgrade to the whole website but is now about to begin.
- 9 Produce 'branding' for Ohiwa collaborative communications. The term branding was perhaps not a wise one to use. What was envisaged was more a theme or symbol for use both internally and externally to clearly identify, and provide a common thread to, publications (which will eventually include signage, interpretive and promotional material) about, and around the harbour. Some concepts have been drafted and discussion has taken place at OHSCG meetings. It is hoped that this will be finalised soon.

A major component of the Communications Plan is the concept of a series of 'top sites'. It is envisaged that a number of significant sites around the harbour will be identified. The sites may be significant by virtue of their cultural history, their ecological values, their landscape values or recreational opportunities. Once these sites have been identified and agreed to by the partners, interpretive signage would be produced and installed (if not already present) and a pamphlet produced for each one. It may be appropriate to erect a pou at sites that are significant to local iwi and hapu. A site 'champion' would be appointed for each from within the appropriate agency to co-ordinate this work and to look after the site. Eventually it is envisaged that these sites would be listed and described in a brochure which would serve as a trail guide for residents and visitors who may like to embark on a self guided tour of the harbour. A requirement of these sites is that they either have parking available or have the space for the provision of parking.

OHS partners and their operational staff have informally discussed some possible sites. A few obvious ones, where some of the necessary signage work has already been done, are Tauwhare Pa (primarily of historical and cultural interest), the Nukuhou saltmarsh (primarily of ecological interest) and the Ohiwa boat ramp area (of recreational, cultural and ecological interest and is important partly because it provides the necessary toilet stop). Other possible sites are the Kutarere wharf (primarily of historical interest), the Ohiwa spit area (which is of interest for many reasons) and the Ohope wharf (primarily of historic and recreational interest).

It is expected that, in line with the communications plan, two of these sites will be identified, agreed to and work begun on filling any information gaps by the end of the year.

The costs associated with this communications plan are not significant. The plan was produced with the help of an outside facilitator who charged for their time and the signage will have small costs associated with it in the future. For all the other actions, either completed or planned, the only cost will be that of staff time.

4 Financial Implications

Current Budget

No financial implications.

Future Implications

No financial implications.

Ten Year / Annual Plan Implications

None..

Tim Senior
Biosecurity Officer

On behalf of the Ōhiwa Harbour Strategy Coordination Group

9 March 2011