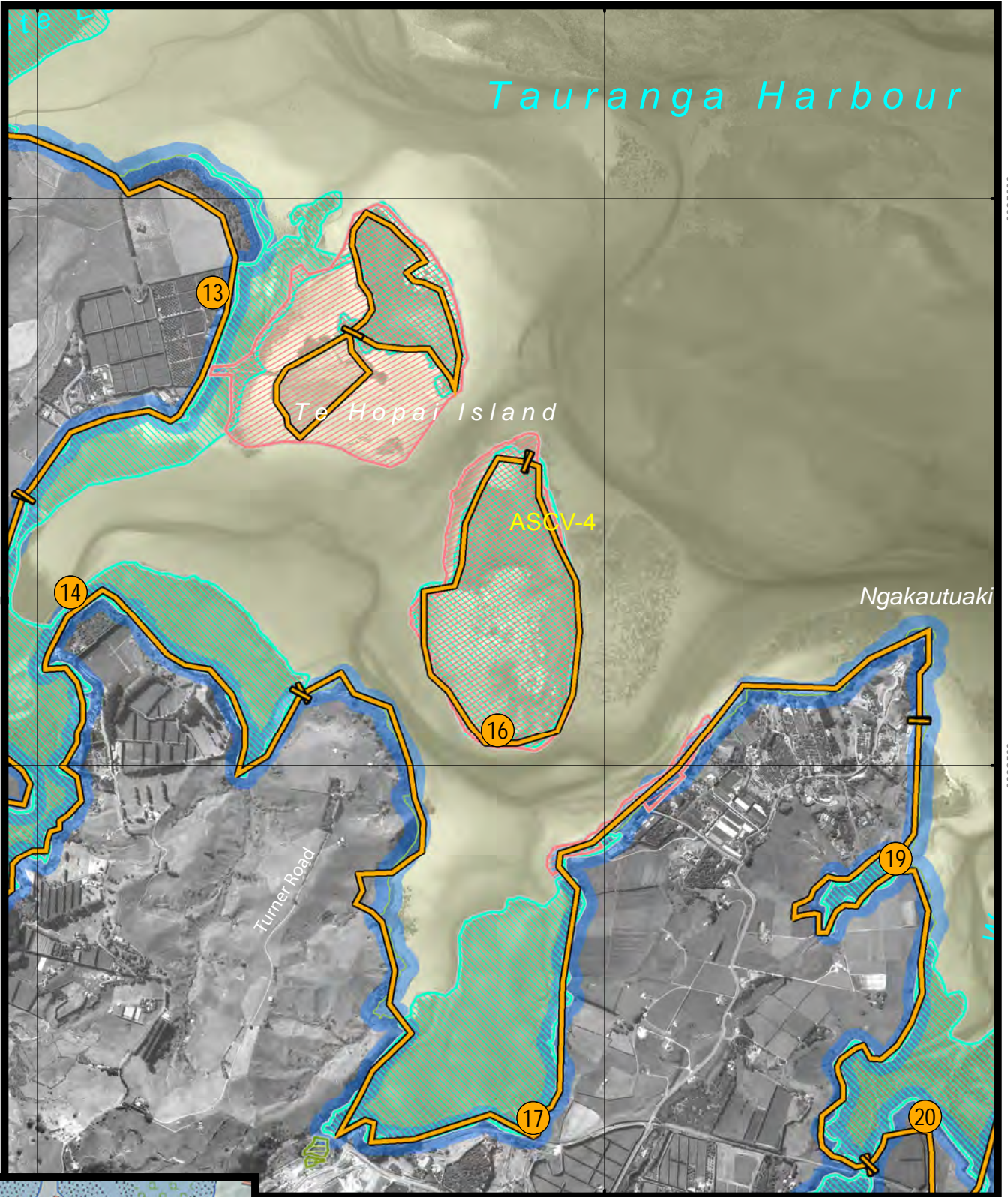








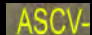
<b>Site 16</b>	<b>Te Hopai Island</b>	<b>Risk ranking: 3</b>
<b>DESCRIPTION</b>		
Large area of salt marsh and ribbon wood located approximately 1 km southeast of Te Hopai Island within the Tauranga Harbour.		
<b>Foreshore type/environmental value</b>	Sandy, muddy shores, riparian vegetation. Habitat, shoreline, contact.	
<b>Map sheets</b>	<b>TOPO 50</b> BD 36	<b>Chart Number</b> NZ 541
<b>Segments</b>	<b>TAU-00461</b>	
<b>At Risk Resources</b>		
<ul style="list-style-type: none"> <li>Banded rail (katakaitai), North Island fern bird (mātātā), variable oystercatcher (tōrea pango), white-faced heron (matuku-moana); southern black back gull nesting colony – low priority</li> <li>All intertidal areas are identified in the Regional Coastal Plan as areas of significant conservation/ cultural value.</li> <li>Cultural Values: Site of Significance</li> </ul>		
<b>Notes</b>		
Where possible, oil should be prevented from entering the Tauranga Harbour.		
<b>Actions</b>		
<ul style="list-style-type: none"> <li>Prevent/minimise oil ingress into this system</li> <li>Notify wildlife team of potential for oiling</li> <li>Notify wildlife team of potential for oiling</li> <li>Consider pre-emptive capture of wildlife generally</li> <li>Activation of oiled wildlife response collection teams if required</li> </ul>		
<b>Access</b>		
Accessible by foot at low tide from Pahoia.		

### Preferred Response Option Matrix

	<b>Most preferred</b>	<b>Least preferred</b>	<b>Feasibility</b>
Containment and recovery	High		Unlikely to work due to tidal movements
On water recovery	High		Possible with ORV or similar
Dispersant application	Low	Requires escalation to Tier 3 and MNZ approval	Water depth won't allow
Shoreline clean-up	Medium		Only possible at low tide
Natural recovery	High		This area covers and uncovers with the tide.

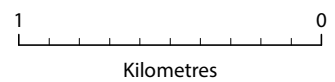


**LEGEND**

-  SCAT Sites
-  Shorebird Roosts
-  Site District of Local Significance
-  Coastal Habitat Preservation Zone
-  Beach Accessways
-  Area Sensitive to Coastal Hazards
-  Area of Significant Conservational Value

## SITE 16 Te Hopai Island

### Oil Spill Management Plan



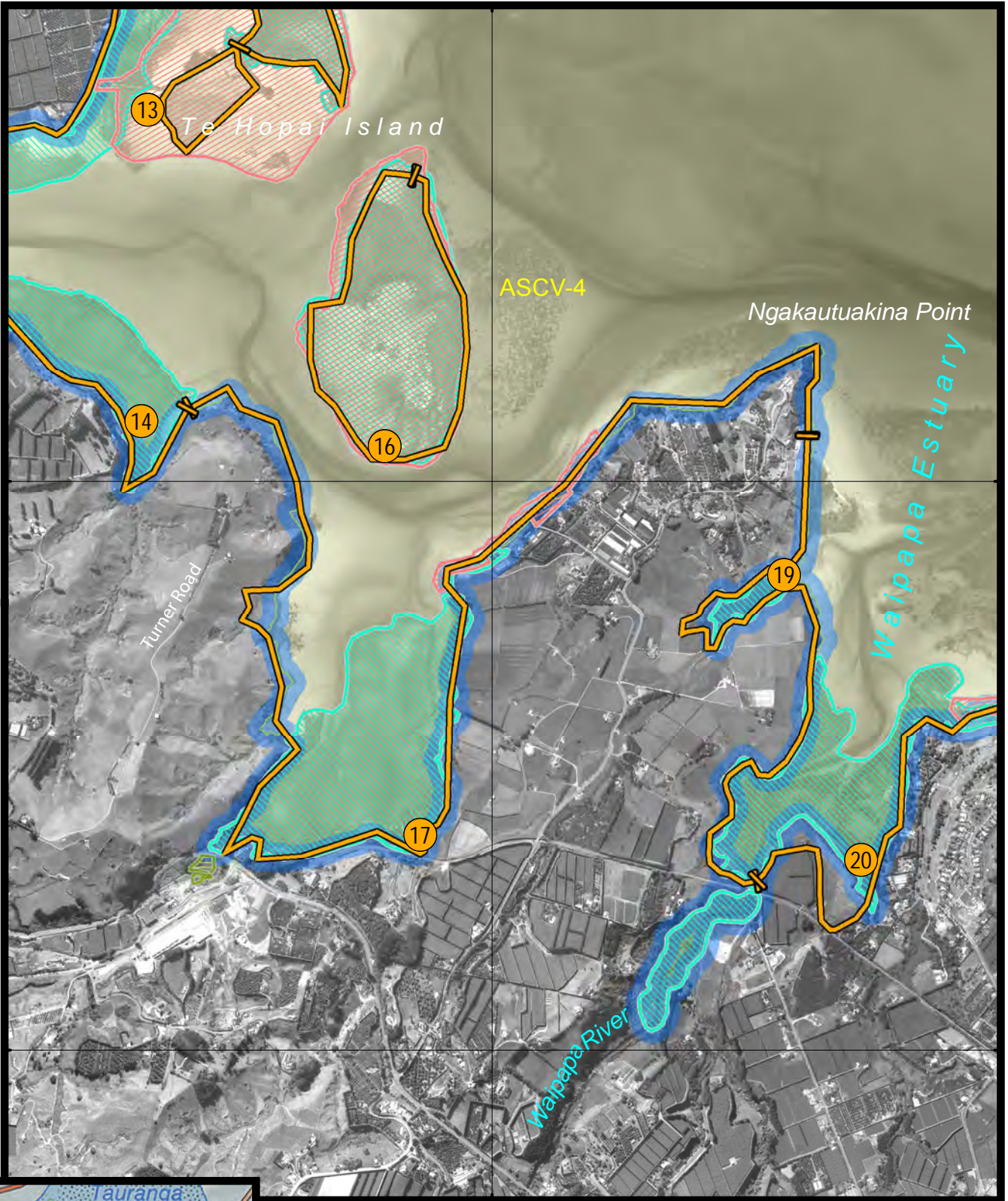
GIS\_462103 - May 2014 © The Bay of Plenty Regional Council  
 © Land Information New Zealand's Digital Cadastral Database (DCDB)  
 CROWN COPYRIGHT RESERVED. Digital Licence No TL/ENV01/01  
 New Zealand Map Grid  
 Aerial Photos flown summer of 2011



<b>Site 17</b>	<b>Apata Estuary</b>	<b>Risk ranking: 2</b>
<b>DESCRIPTION</b>		
Contains a large, good quality stand of mangroves, with relatively narrow strips of saltmarsh along the margins.		
<b>Foreshore type/environmental value</b>	Sandy/muddy shores. Habitat (intertidal), contact.	
<b>Map sheets</b>	<b>NZ Topo 50</b> BD36 Lower Kaimai	<b>Chart Number</b> NZ541; NZ5411
<b>Segments</b>	<b>TAU-00450, TAU-00460</b>	
<b>At Risk Resources</b>		
<ul style="list-style-type: none"> <li>Local birds include: Australasian bittern (matuku hūrepo), banded rail (kataitai), North Island fernbird (mātātā)</li> <li>Whitebait (inanga)</li> </ul>		
<b>Notes</b>		
Where possible, oil should be prevented from entering the Tauranga Harbour.		
<b>Actions</b>		
<ul style="list-style-type: none"> <li>Notify wildlife team of potential for oiling</li> <li>Consider pre-emptive capture of wildlife generally</li> <li>Activation of oiled wildlife response collection teams if required</li> </ul>		
<b>Access</b>		
Foot and boats.		

#### Preferred Response Option Matrix

	<b>Most preferred</b>	<b>Least preferred</b>	<b>Feasibility</b>
Containment and Recovery	High		Possible with use of natural collection points
On water Recovery	High		Possible in the channel areas
Dispersant Application	Low	Requires escalation to Tier 3 and MNZ approval	Water depth won't allow
Shoreline Clean-up	Medium		Labour intensive
Natural Recovery	Medium		On-going monitoring










6392500

6390060



INSET

**LEGEND**

-  SCAT Sites
-  Shorebird Roosts
-  Site District of Local Significance
-  Coastal Habitat Preservation Zone
-  Beach Accessways
-  Area Sensitive to Coastal Hazards
-  ASCV-4 Area of Significant Conservational Value

## SITE 17 Apata Estuary Oil Spill Management Plan



Kilometres

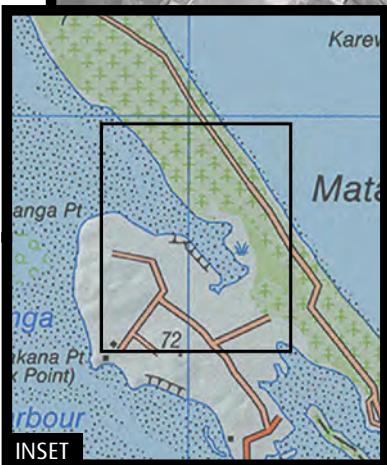
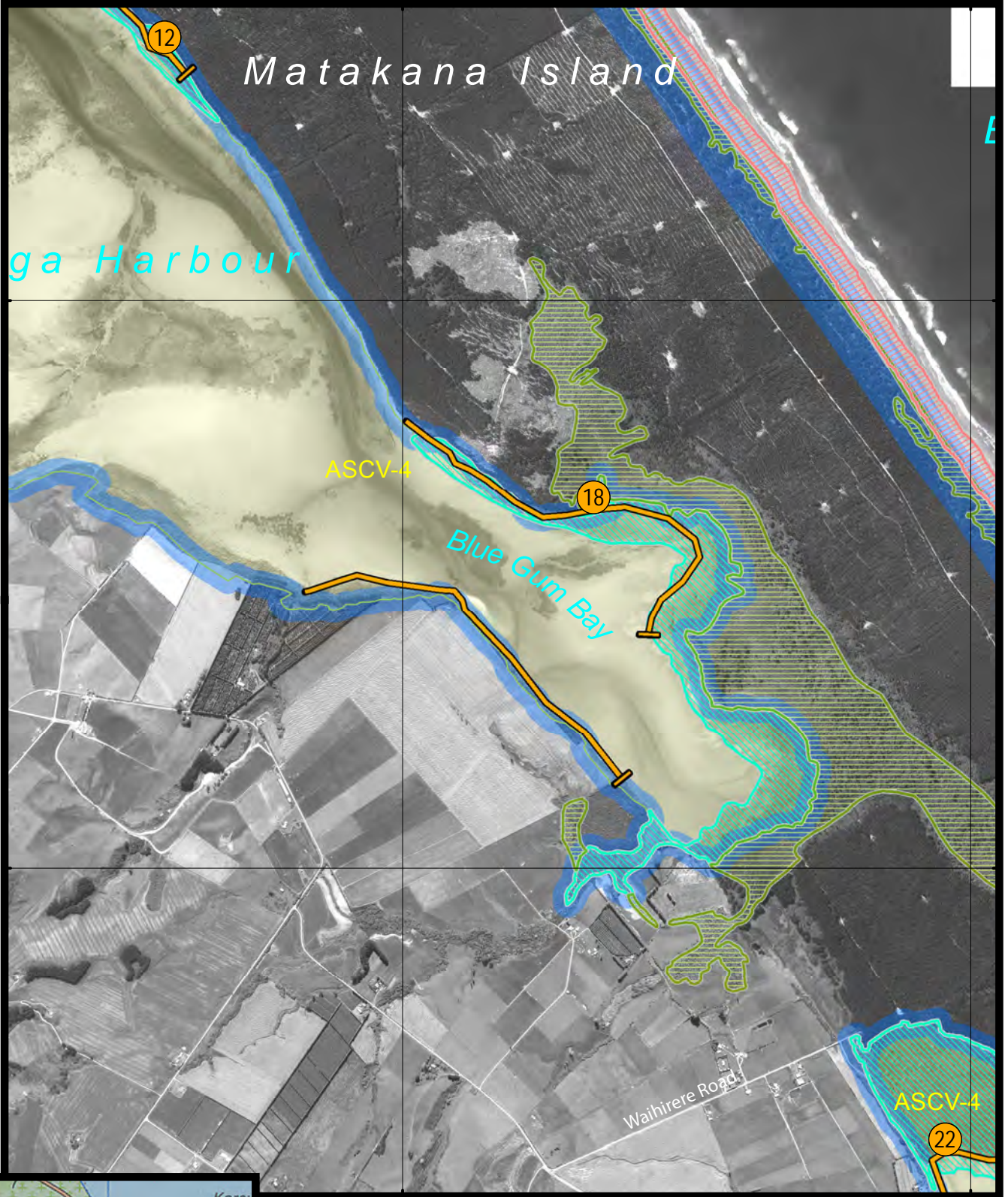
GIS\_462103 - May 2014 © The Bay of Plenty Regional Council  
 © Land Information New Zealand's Digital Cadastral Database (DCDB)  
 CROWN COPYRIGHT RESERVED. Digital Licence No TL/ENV01/01  
 New Zealand Map Grid  
 Aerial Photos flown summer of 2011



Site 18	Blue Gum Bay		Risk ranking: 1
<b>DESCRIPTION</b>			
Blue Gum Bay is an extensive wetland, much of which is a relatively unmodified, representative example of the estuarine and freshwater vegetation of Tauranga Harbour.			
Saltmarsh with mangrove edge, important feeding area for wide range of bird species.			
<b>Foreshore type/environmental value</b>	Saltmarsh with mangrove edge. All shore segments have "habitat value".		
<b>Map sheets</b>	<b>TOPO 50</b> BC36 Katikati BD36 Lower Kaimai	<b>Chart Number</b> NZ 541	
<b>Segments</b>	<b>TAU-00790, TAU-00810</b>		
<b>At Risk Resources</b>			
<ul style="list-style-type: none"> <li>• Banded rail (kataitai), bittern (matuku hūrepo), spotless crake (pūweto), marsh crake (koitareke) and North Island fernbird (matata)</li> <li>• Range of duck species</li> <li>• Wetland margin, intertidal habitats, mudflats, saltmarsh</li> <li>• Flounder (Patiki) breeding</li> <li>• Mud snail (Titiko)</li> <li>• Cultural values: Mahinga Kai</li> </ul>			
<b>Notes</b>			
<b>Actions</b>			
<ul style="list-style-type: none"> <li>• Prevent/minimise oil ingress into this system, locality could be protected by booming the local bay</li> <li>• Notify wildlife team of potential for oiling</li> <li>• Consider pre-emptive capture of wildlife generally</li> <li>• Activation of oiled wildlife response collection teams if required</li> </ul>			
<b>Access</b>			
Foot access at low tide via Matakana Island.			

**Preferred Response Option Matrix**

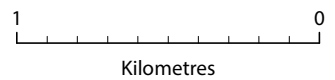
	<b>Most preferred</b>	<b>Least preferred</b>	<b>Feasibility</b>
Containment and Recovery	High		Shallow but can be effectively boomed
On water Recovery	Medium		Only possible in narrow channel
Dispersant Application	Low	Requires escalation to Tier 3 and MNZ approval	Water depth won't allow
Shoreline Clean-up	High		Likely to be best option
Natural Recovery	High		See NEBA



**LEGEND**

-  SCAT Sites
-  Shorebird Roosts
-  Site District of Local Significance
-  Coastal Habitat Preservation Zone
-  Beach Accessways
-  Area Sensitive to Coastal Hazards
-  ASCV-4 Area of Significant Conservational Value

## SITE 18 Blue Gum Bay Oil Spill Management Plan



GIS\_462103 - May 2014 © The Bay of Plenty Regional Council  
 © Land Information New Zealand's Digital Cadastral Database (DCDB)  
 CROWN COPYRIGHT RESERVED. Digital Licence No TL/ENV01/01  
 New Zealand Map Grid  
 Aerial Photos flown summer of 2011

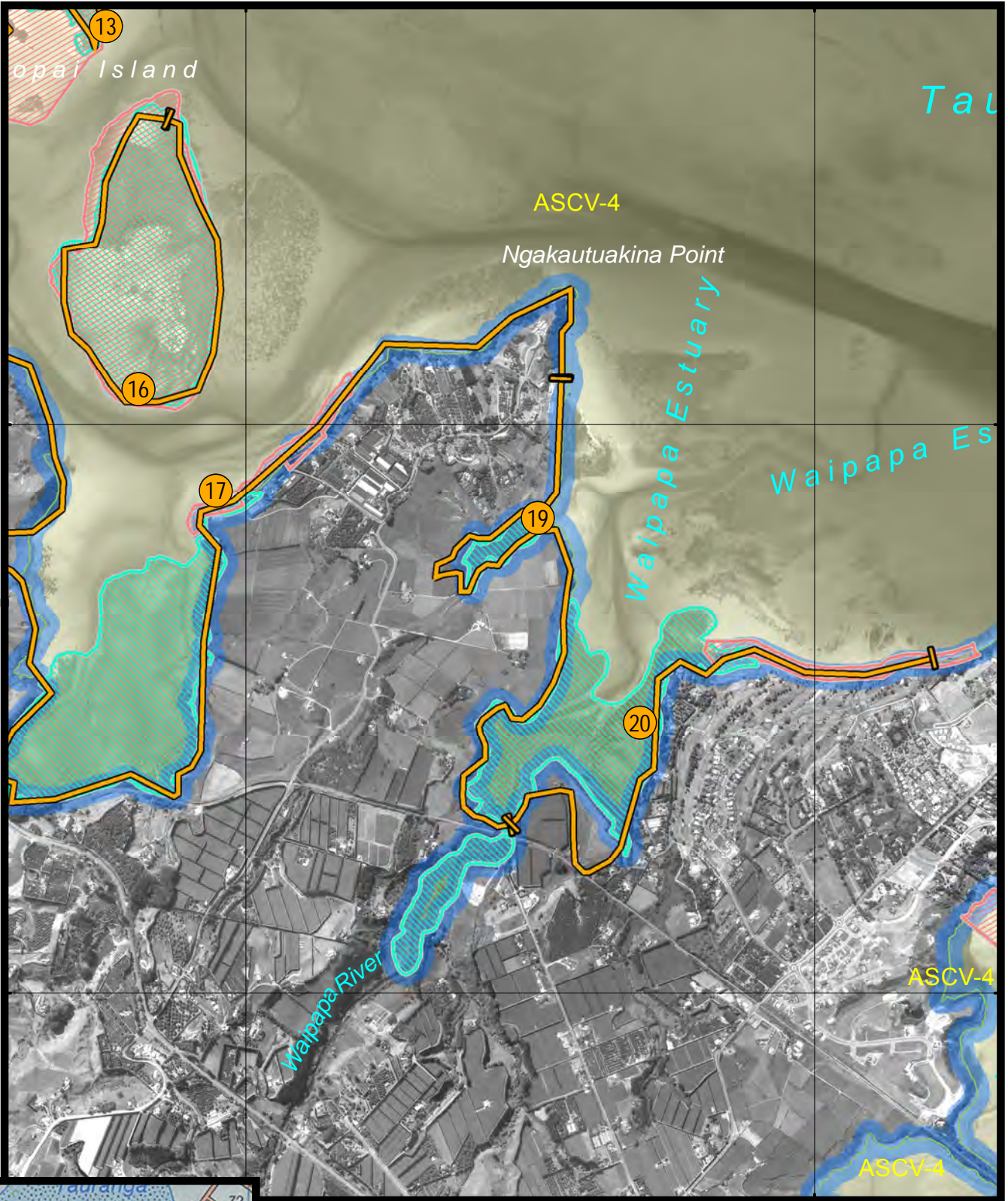


<b>Site 19</b>	<b>Pahoia North</b>	<b>Risk ranking: 2</b>
<b>DESCRIPTION</b> Low energy estuary tidal lower reaches, small area of salt marsh with manuka in behind		
<b>Foreshore type/environmental value</b>	Sand, Mud flats Habitat (intertidal) All shore segments have "habitat value"	
<b>Map sheets</b>	<b>NZ Topo 50</b> BD36 Lower Kaimai	<b>Chart Number</b> NZ541; NZ5411
<b>Segments</b>	<b>Northern part of TAU- 00440</b>	
<b>At Risk Resources</b>		
<ul style="list-style-type: none"> <li>Local birds include: Australasian bittern (matuku hūrepo), banded rail (kataitai), North Island fernbird (mātātā)</li> <li>White bait (inanga)</li> <li>All intertidal areas are identified in the Regional Coastal Plan as areas of significant conservation/ cultural value</li> </ul>		
<b>Cultural Sites/Resources:</b>		
<ul style="list-style-type: none"> <li>U14/1206</li> </ul>		
<b>Notes and Preferred protection and clean-up options</b>		
Where possible, oil should be prevented from entering the Tauranga Harbour.		
<b>Actions</b>		
<ul style="list-style-type: none"> <li>Notify wildlife team of potential for oiling</li> <li>Consider pre-emptive capture of wildlife generally</li> <li>Activation of oiled wildlife response collection teams if required</li> </ul>		
<b>Access</b>		
Foot		

### Preferred Response Option Matrix

	<b>Most preferred</b>	<b>Least preferred</b>	<b>Feasibility</b>
Containment and Recovery	High		Possible with use of natural collection points
On water Recovery	High		Possible in the channel areas
Dispersant Application	Low	Requires escalation to Tier 3 and MNZ approval	Water depth won't allow
Shoreline Clean-up	Medium		Labour intensive
Natural Recovery	Medium		On-going monitoring












6392500

6390000



INSET

**LEGEND**

-  SCAT Sites
-  Shorebird Roosts
-  Site District of Local Significance
-  Coastal Habitat Preservation Zone
-  Beach Accessways
-  Area Sensitive to Coastal Hazards
-  ASCV-4

## SITE 19 Pahoa North Oil Spill Management Plan



Kilometres

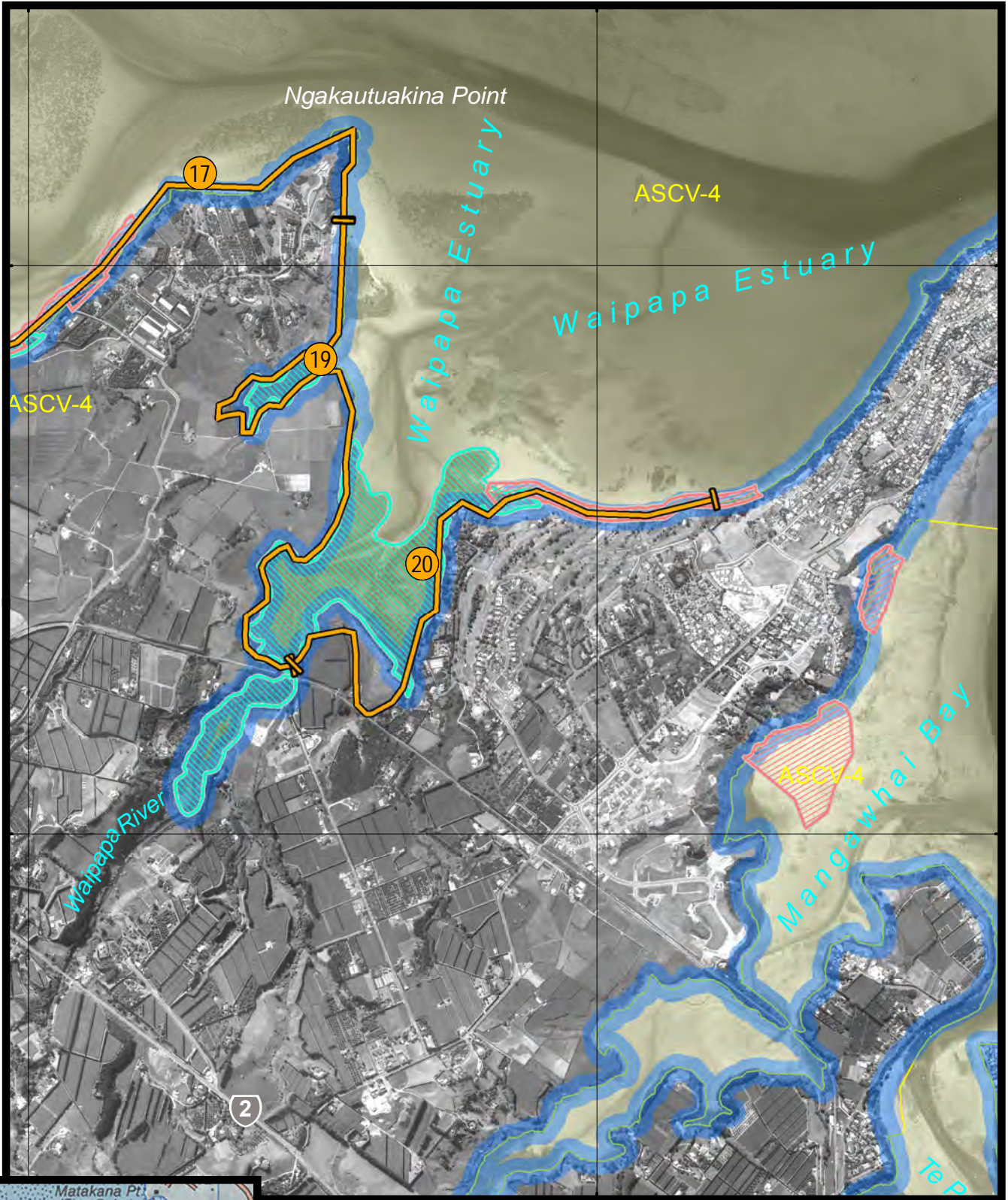
GIS\_462103 - May 2014 © The Bay of Plenty Regional Council  
 © Land Information New Zealand's Digital Cadastral Database (DCDB)  
 CROWN COPYRIGHT RESERVED. Digital Licence No TL/ENV01/01  
 New Zealand Map Grid  
 Aerial Photos flown summer of 2011



<b>Site 20</b>	<b>Pahoia South</b>	<b>Risk ranking: 2</b>
<b>DESCRIPTION</b>		
This site contains a representative, relatively large area of high quality oioi sedgeland inland from the main harbour adjacent to a tidal stream. Waipapa Estuary is a relatively large, good quality example of mangrove stands and saltmarsh. Mangrove scrub and shrublands form the cover over much of this area.		
<b>Foreshore type/environmental value</b>	Sandy/muddy shores. Habitat (intertidal) contact.	
<b>Map sheets</b>	<b>NZ Topo 50</b> BD36 Lower Kaimai	<b>Chart Number</b> NZ541; NZ5411
<b>Segments</b>	<b>Southern part of TAU-00440</b>	
<b>At Risk Resources</b>		
<ul style="list-style-type: none"> <li>Local birds include: Australasian bittern (matuku hūrepo), banded rail (kataitai), North Island fernbird (mātātā)</li> <li>Whitebait (inanga)</li> </ul>		
<b>Notes</b>		
Where possible, oil should be prevented from entering the Tauranga Harbour.		
<b>Actions</b>		
<ul style="list-style-type: none"> <li>Notify wildlife team of potential for oiling</li> <li>Consider pre-emptive capture of wildlife generally</li> <li>Activation of oiled wildlife response collection teams if required</li> </ul>		
<b>Access</b>		
Via Omokoroa by foot.		

### Preferred Response Option Matrix

	<b>Most preferred</b>	<b>Least preferred</b>	<b>Feasibility</b>
Containment and Recovery	High		Possible with use of natural collection points
On water Recovery	High		Possible in the channel areas
Dispersant Application	Low	Requires escalation to Tier 3 and MNZ approval	Water depth won't allow
Shoreline Clean-up	Medium		Labour intensive
Natural Recovery	Medium		On-going monitoring



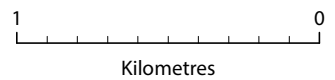
6392500  
6390000



**LEGEND**

-  SCAT Sites
-  Shorebird Roosts
-  Site District of Local Significance
-  Coastal Habitat Preservation Zone
-  Beach Accessways
-  Area Sensitive to Coastal Hazards
-  ASCV-4 Area of Significant Conservational Value

# SITE 20 Pahola South Oil Spill Management Plan



GIS\_462103 - May 2014 © The Bay of Plenty Regional Council  
 © Land Information New Zealand's Digital Cadastral Database (DCDB)  
 CROWN COPYRIGHT RESERVED. Digital Licence No TL/ENV01/01  
 New Zealand Map Grid  
 Aerial Photos flown summer of 2011

