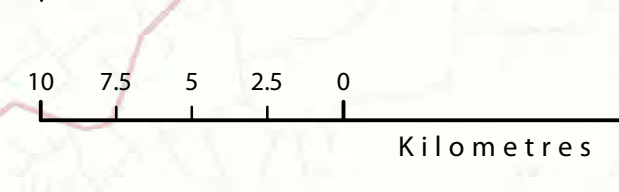


- Legend**
- High Value Ecological Sites
 - Biodiversity Sites - Mixed/Other
 - Biodiversity Sites - Public
 - Biodiversity Sites - Private
 - Exotic forest

- Reference**
- Lakes
 - River
 - Roading
 - State Highway
 - District Boundary
 - Region Boundary
 - Catchment Boundary

North Points
Magnetic North on this map is 20°16' of Grid North during 2000 increasing at the rate of approximately 1' over 33 years.

Projection Information
This map is drawn on the New Zealand Map Grid Projection, a minimum error conformal projection.



Background information

High Value Ecological Sites (HVES) are the best quality or only remaining representative examples of indigenous vegetation or wildlife habitats on particular landform units within a bioclimatic zone in an ecological district. They contain some of the largest, best quality, or only remaining examples of indigenous vegetation or wildlife habitat.

Mapping was completed by using a composite of all the relevant spatial information for biodiversity and HVES across the region in a purely desk top exercise. The best representation of each site as it occurs on the ground (using the most recent aerial photography available) was used. Changes to exclude parts of the original site boundary included areas of pasture or plantation forestry that was easily visible. No field verification was done as part of this exercise.

This dataset is NOT FOR REGULATORY PURPOSES, to show where our significant biodiversity sites are and how it fits the regional picture. It may also be used to assist in reporting on the state of biodiversity and management of biodiversity in the region. It will be used to provide the spatial information for the Terrestrial Biodiversity Database.

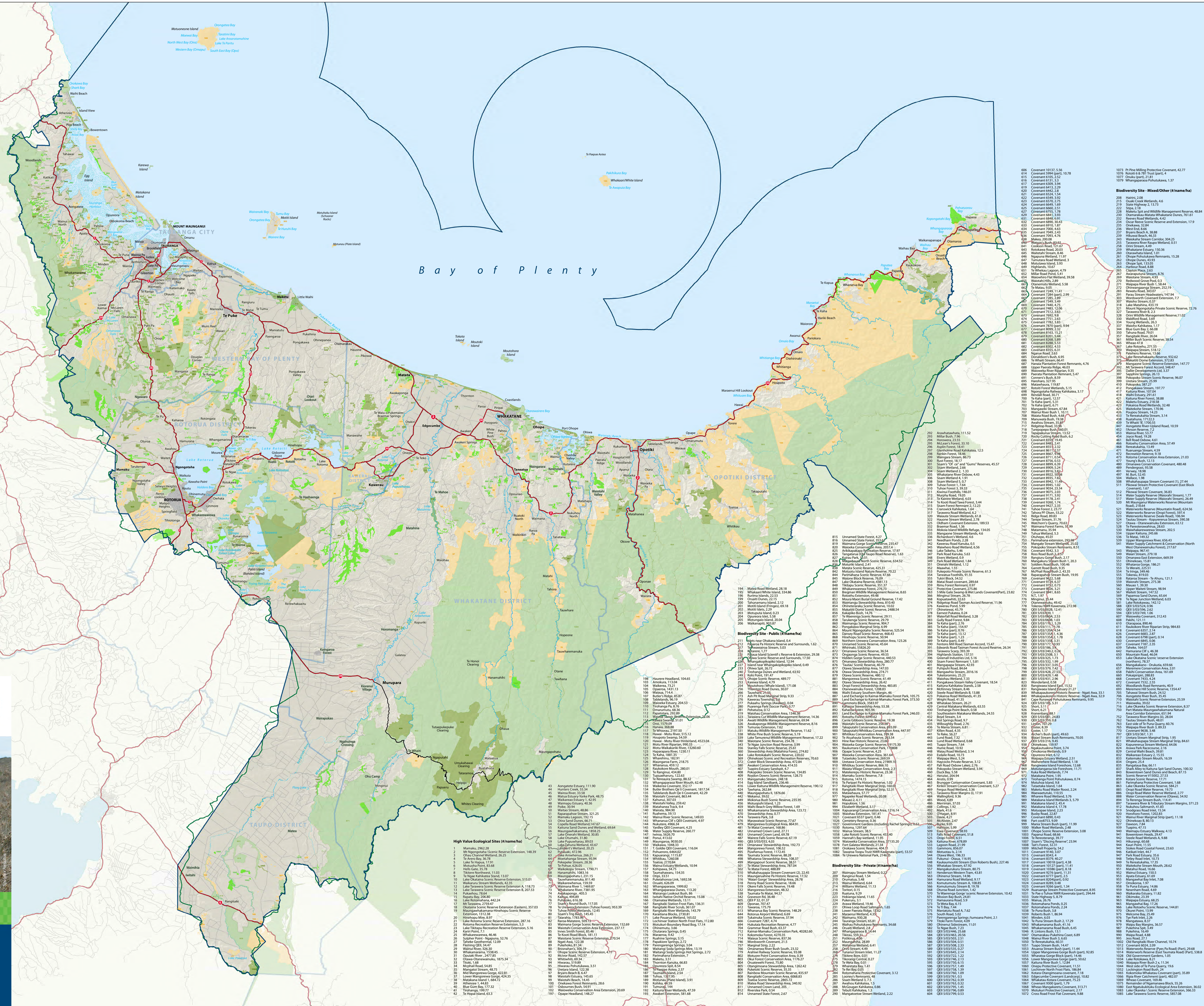
This dataset is NOT FOR REGULATORY PURPOSES. Users must refer back to the appropriate original dataset where there is a regulatory purpose for knowing the extent of a site (EG a site that is scheduled in a district plan). It is not to be used as background information for any planning purposes – the original reports should be referred to.

© The Bay of Plenty Regional Council
Sourced from Land Information New Zealand data.
CROWN COPYRIGHT RESERVED



Biodiversity Sites in the Bay of Plenty Region

December 2010
C2.51
1:250 000



High Value Ecological Sites (i/n/ma/ha)

1. Matakana 2062.26
2. Mt Ngongotaha Scenic Reserve Extension 148.9
3. Lake Taupo Wetland 26.25
4. Lake Taupo 19.91
5. Lake Taupo 19.91
6. Lake Taupo 19.91
7. Lake Taupo 19.91
8. Lake Taupo 19.91
9. Te Ngae Kahurangi Scenic Reserve 13.07
10. Lake Taupo Scenic Reserve Extension A, 1103.01
11. Waikareu Scenic Reserve Extension B, 2073.73
12. Lake Taupo Scenic Reserve Extension A, 1103.01
13. Lake Taupo Scenic Reserve Extension B, 2073.73
14. Lake Taupo Scenic Reserve Extension C, 1103.01
15. Lake Taupo Scenic Reserve Extension D, 1103.01
16. Lake Taupo Scenic Reserve Extension E, 1103.01
17. Lake Taupo Scenic Reserve Extension F, 1103.01
18. Lake Taupo Scenic Reserve Extension G, 1103.01
19. Lake Taupo Scenic Reserve Extension H, 1103.01
20. Lake Taupo Scenic Reserve Extension I, 1103.01

Biodiversity Site - Public (i/n/ma/ha)

1. Bglen near Ohakana Island 0.4
2. Whakarewa Forest Reserve and Surrounds 1.62
3. Whakarewa Forest Reserve 5.03
4. Whakarewa Forest Reserve Extension 20.38
5. Whakarewa Forest Reserve Extension 13.50
6. Whakarewa Forest Reserve Extension 13.50
7. Whakarewa Forest Reserve Extension 13.50
8. Whakarewa Forest Reserve Extension 13.50
9. Whakarewa Forest Reserve Extension 13.50
10. Whakarewa Forest Reserve Extension 13.50
11. Whakarewa Forest Reserve Extension 13.50
12. Whakarewa Forest Reserve Extension 13.50
13. Whakarewa Forest Reserve Extension 13.50
14. Whakarewa Forest Reserve Extension 13.50
15. Whakarewa Forest Reserve Extension 13.50
16. Whakarewa Forest Reserve Extension 13.50
17. Whakarewa Forest Reserve Extension 13.50
18. Whakarewa Forest Reserve Extension 13.50
19. Whakarewa Forest Reserve Extension 13.50
20. Whakarewa Forest Reserve Extension 13.50

Biodiversity Site - Private (i/n/ma/ha)

1. Whakarewa Forest Reserve 5.03
2. Whakarewa Forest Reserve Extension 20.38
3. Whakarewa Forest Reserve Extension 13.50
4. Whakarewa Forest Reserve Extension 13.50
5. Whakarewa Forest Reserve Extension 13.50
6. Whakarewa Forest Reserve Extension 13.50
7. Whakarewa Forest Reserve Extension 13.50
8. Whakarewa Forest Reserve Extension 13.50
9. Whakarewa Forest Reserve Extension 13.50
10. Whakarewa Forest Reserve Extension 13.50
11. Whakarewa Forest Reserve Extension 13.50
12. Whakarewa Forest Reserve Extension 13.50
13. Whakarewa Forest Reserve Extension 13.50
14. Whakarewa Forest Reserve Extension 13.50
15. Whakarewa Forest Reserve Extension 13.50
16. Whakarewa Forest Reserve Extension 13.50
17. Whakarewa Forest Reserve Extension 13.50
18. Whakarewa Forest Reserve Extension 13.50
19. Whakarewa Forest Reserve Extension 13.50
20. Whakarewa Forest Reserve Extension 13.50

Biodiversity Site - Mixed/Other (i/n/ma/ha)

206. Haines 2.08
207. Oval Creek Wetlands 6.6
208. Makara Spit and Wildlife Management Reserve 48.84
209. Chenuka-Matai-Whakarewa Dunes 70.61
210. State Highway 2, 13.73
211. State Highway 2, 13.73
212. State Highway 2, 13.73
213. State Highway 2, 13.73
214. State Highway 2, 13.73
215. State Highway 2, 13.73
216. State Highway 2, 13.73
217. State Highway 2, 13.73
218. State Highway 2, 13.73
219. State Highway 2, 13.73
220. State Highway 2, 13.73
221. State Highway 2, 13.73
222. State Highway 2, 13.73
223. State Highway 2, 13.73
224. State Highway 2, 13.73
225. State Highway 2, 13.73
226. State Highway 2, 13.73
227. State Highway 2, 13.73
228. State Highway 2, 13.73
229. State Highway 2, 13.73
230. State Highway 2, 13.73
231. State Highway 2, 13.73
232. State Highway 2, 13.73
233. State Highway 2, 13.73
234. State Highway 2, 13.73
235. State Highway 2, 13.73
236. State Highway 2, 13.73
237. State Highway 2, 13.73
238. State Highway 2, 13.73
239. State Highway 2, 13.73
240. State Highway 2, 13.73
241. State Highway 2, 13.73
242. State Highway 2, 13.73
243. State Highway 2, 13.73
244. State Highway 2, 13.73
245. State Highway 2, 13.73
246. State Highway 2, 13.73
247. State Highway 2, 13.73
248. State Highway 2, 13.73
249. State Highway 2, 13.73
250. State Highway 2, 13.73