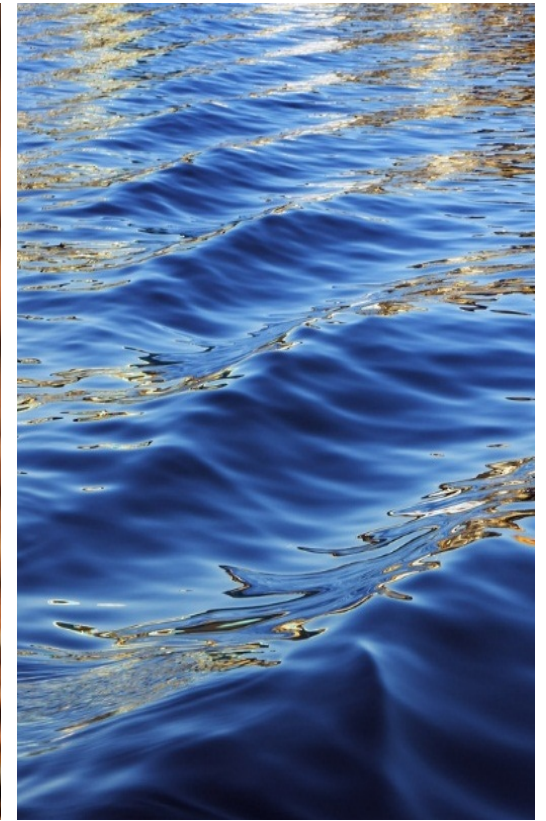
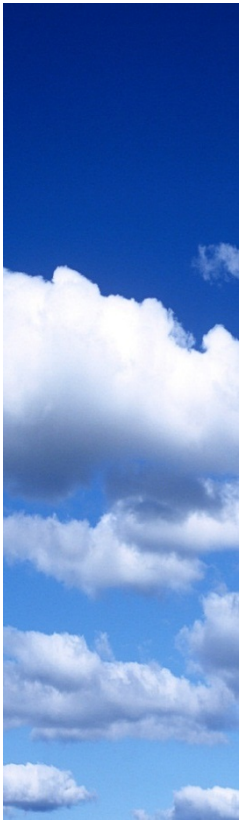




NGĀTI HAUĀ MAHI TRUST

# **Wai Maori: Rangatahi Toa Taiao Presentation**



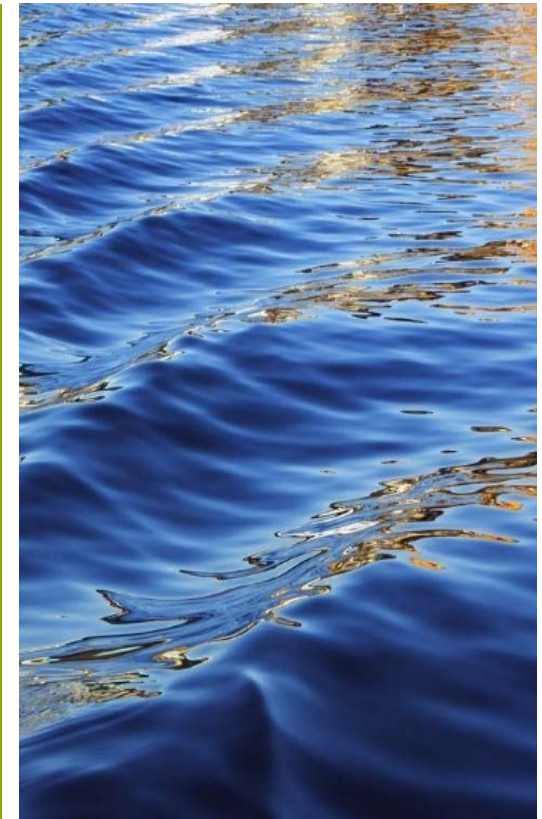


# Rangatahi Perspective

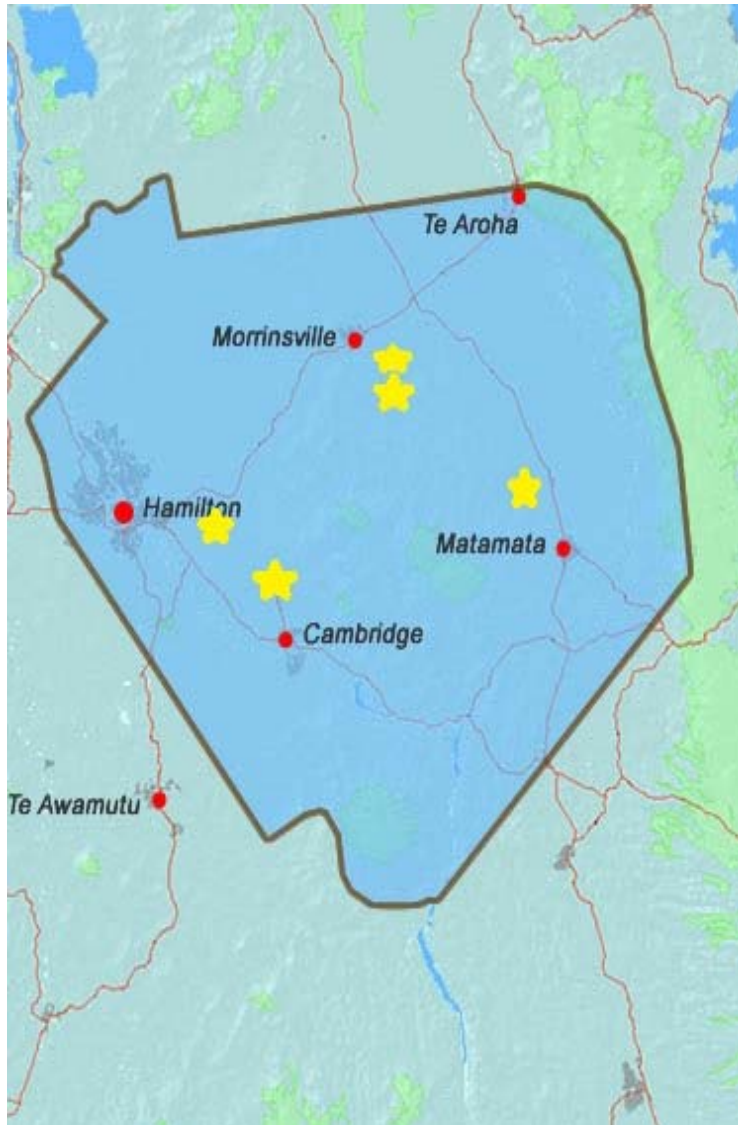
***1) Kai resource***

***2) Recreation activity's***

***3) Sustainable employment***



# Ngati Haua Mahi Trust



- Strives to create training and employment opportunities to enhance the health and wellbeing of the community and environment irrespective of ethnicity.
- Our rohe include a number of Iwi affiliations and territorial authorities: local, district, and regional councils.
- River Catchments: Waikato, Mangaonua, Mangaharakeke, Mangaone, Karapiro, Waihou, Waitoa, Piako, Topehaehae, Waitakaruru
- Key relationships/ outcomes sought through collaboration

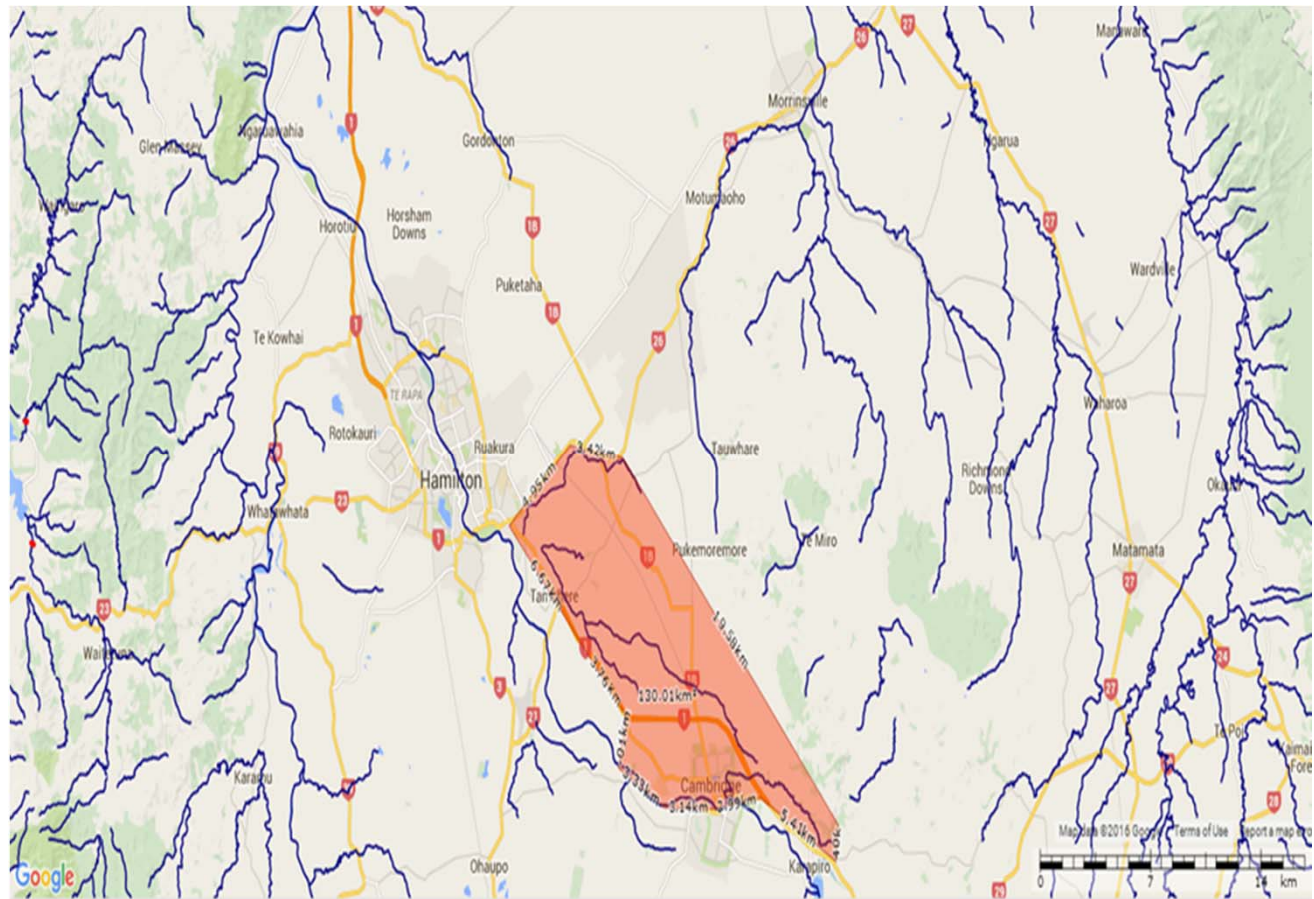
# Current and Future Catchment Projects

## Current Projects

- Karapiro Catchment
- Mangaonua Catchment
- Mangaone Catchment
- Reconstructed Wetlands, St Peters Collage
- Peat Lakes Restoration, Rotoruna

## Future Projects

- Topehaehae catchment
- Piako Catchment





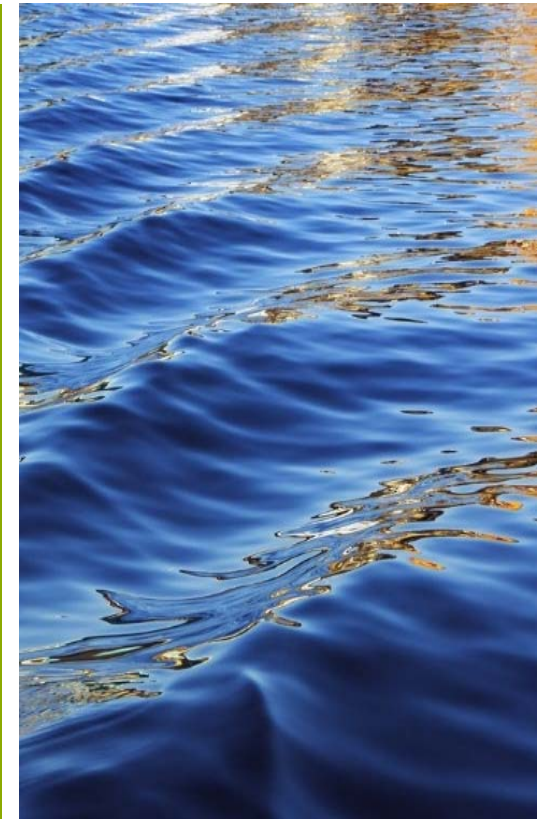
# OUR VISION

*Tiaki Manaakitia Te Tangata – Tiaki Manaakitia Te  
Taiao*

**Looking after our People – Looking after our Environment**



- 1) *Training opportunities to grow the skills, knowledge base & workforce of our community & our marae*
- 2) *Sustainable employment opportunities cultivates a thriving community*
- 3) *Enriching the wellbeing of the environment supports a healthy community*



# VISITING OUR LOCAL INDUSTRIES



# ***TRAINING: ON OUR MARAE***



# TRAINING FOR OUR NURSERY



**PLANT YOUR FUTURE**

FREE 22-WEEK COURSE FOR THOSE AGED 16 TO 19, RIGHT HERE IN MORRINSVILLE!

Supported by the Ngati Haua Mahi Trust

**FREE COURSE IN MORRINSVILLE**

OF COURSE YOU CAN DO IT!

Learn the art of planting, growing and nurturing native plants. The course includes the safe use of tractors, how to service horticulture equipment and credits towards NCEA Level 2.

Phone 0800 872 466 to find out more or turn up at Ngati Haua Mahi Trust, 39 Anza Ave, Morrinsville, Thursday 21st between 11:00 am and 2:00pm.

**atc trainme**  
PATHWAYS TO EMPLOYMENT



# EMPLOYMENT

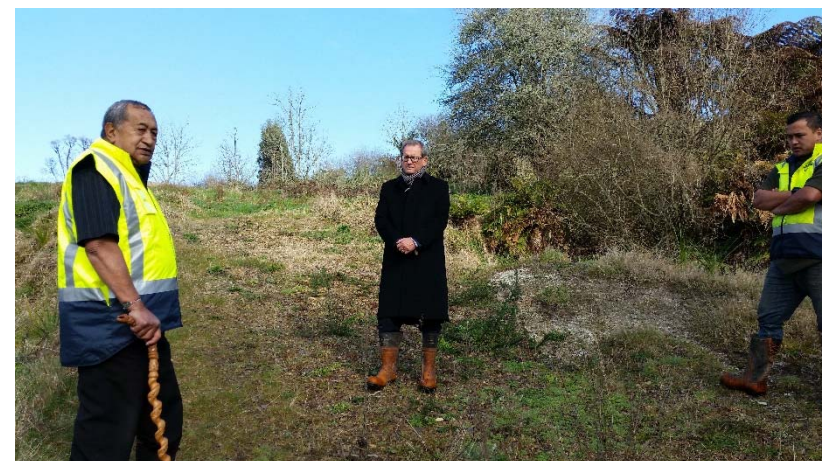


# ENVIRONMENT



# Matauranga Maori: Discovery of a cultural artefact

## Photos of area and artefact





# Rangatahi Aspirations

- 1) *Growing Rangatahi engagement in the economic value of water*
- 2) *Knowledge transfer from our Tuakana of information that will give us as Rangatahi a strong platform to move forward into the future*
- 3) *Create a forum for Rangatahi to feel comfortable to share their views on water*

