

Operative

Bay of Plenty Regional Water and Land Plan



*Working with our communities for a better environment
E mahi ngatahi e pai ake ai te taiao*



Bay of Plenty Regional Water and Land Plan

Update Record

Date	Change / Update	Provisions Affected	Signature
8 October 2014	Insert new paragraph from policy A4 of the National Policy Statement for Freshwater Management 2014 into the Regional Plan	<ul style="list-style-type: none"> • Policy 43A Discharges to Water and Land 	
28 June 2011	Insert policies A4 and B7 from the National Policy Statement for Freshwater Management into the Regional Plan Minor amendment	<ul style="list-style-type: none"> • Policy 43A Discharges to Water and Land • Policy 68A Take and Use of Surface Water and Groundwater • Pages 255-256 	
2 March 2010	Plan Change 8 adopted and incorporated into the regional plan	<ul style="list-style-type: none"> • Groundwater Bores: Rules 39, 39A, 40, 40A and 40B. Definition of Terms • Flooding Conditions: Rules 23, 24, 30, 30A, 31, 31A, 33, 44, 44A, 46, 47, 70A and 79 	
	Plan Change 8 - Minor amendments Other Minor amendments	<ul style="list-style-type: none"> • Rules 23, 31, 31A, 33 (renumbered) • Method 35B and Index renumbered • Updated references to renumbered rules • Rule 46A (typographical error and renumbered conditions) • Section 5.1 Para 1 (typographical error) • Section 9.1 Rules Table (includes rules introduced by Plan Change 8 rules) • Section 9.10 Para 14 and Definition of Terms - Farm Quality Programme (correction to plan cross-reference) 	
	Consequential Amendments	<ul style="list-style-type: none"> • Update record inserted • Table of Contents updated 	

Bay of Plenty Regional Council
PO Box 364
Whakatane
New Zealand

Strategic Policy Publication 2008/06
ISSN 1176 4112

BAY OF PLENTY REGIONAL WATER AND LAND PLAN

1 December 2008

Plan Change 8 (Groundwater Bores and Flooding Conditions)
incorporated on 2 March 2010

Amended 28 June 2011 as required by National Policy Statement for
Freshwater Management 2011

Amended 8 October 2014 as required by National Policy Statement for
Freshwater Management 2014

Bay of Plenty Regional Council

RESOURCE MANAGEMENT ACT 1991

**ENVIRONMENT BAY OF PLENTY
BAY OF PLENTY REGIONAL COUNCIL**

BAY OF PLENTY REGIONAL WATER AND LAND PLAN

It is hereby certified that this is the Bay of Plenty Regional Water and Land Plan approved by resolution of the Council on the 15th day of October 2008.

The Council has further resolved that the Plan shall become operative on the 1st day of December 2008.

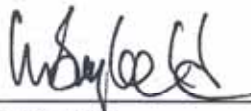
The Common Seal of the **BAY OF PLENTY REGIONAL COUNCIL** was affixed hereto this 12th day of November 2008, in the presence of:



John Cronin
Chairman



Plan Change No. 8 (Groundwater Bores and Flooding Conditions) incorporated on 2 March 2010.



Bill Bayfield
Chief Executive



John Cronin
Chairman



Bill Bayfield
Chief Executive

READER'S GUIDE

There may be some parts of this regional plan that are of particular interest to the reader. To find these parts, the following guide gives a brief summary of what each chapter is about.

Section 1 Introduction: names the regional plan; defines its geographical coverage and the resource management issues within its scope; and outlines the purpose of the regional plan.

Section 2 Kaitiakitanga: provisions to address section 6(e), 7(a) and 8 of the Resource Management Act 1991.

Section 3 The Integrated Management of Land and Water: provisions to address the integrated management of land and water resources in the Bay of Plenty region. Includes surface water and groundwater quality, soil conservation and land management practice issues (including riparian management), and effects of land cover on water quantity.

Section 4 Discharges to Water and Land: specific provisions to manage the adverse effects of discharges of contaminants to water and land, discharges of water to water, stormwater discharges, and discharges from existing contaminated sites. This chapter relates to section 15 of the Resource Management Act 1991.

Section 5 Water Quantity and Allocation: provisions to allocate surface and groundwater, manage the adverse effects of damming and diversion, address the artificial control of lake water levels, and manage flood hazards. This chapter relates to section 14 of the Resource Management Act 1991. Instream minimum flow requirements are established in this chapter.

Section 6 Beds of Rivers, Streams, Lakes and Wetlands: provisions to manage the effects of activities in, on, under or over the beds of rivers, streams, lakes, and land drainage canals. Covers structures, disturbances of the bed, deposition of substances, reclamation and drainage, introduction or removal of plants, and stock presence in the beds of surface water bodies. This chapter relates to section 13 of the Resource Management Act 1991.

Section 7 Geothermal Resources: provisions to manage the allocation, damming and diversion, discharge of geothermal heat, fluid and energy. Drilling of geothermal bores and geothermal hazards are also addressed. This chapter relates to sections 14 and 15 of the Resource Management Act 1991.

Section 8 Wetlands: provisions to protect and maintain wetlands in the region, and encourage the creation of new wetlands in appropriate areas.

Section 9 Regional Rules: contains regional rules relating to sections 3 to 8 of this regional plan.

Section 10 Financial Contributions: defines circumstances where financial contributions may be used in relation to activities controlled by this regional plan, and the amount of the financial contribution.

Section 11 Information to be submitted with Resource Consent Applications: directs resource consent applicants to contact Environment Bay of Plenty to ensure sufficient information is submitted with a consent application.

Section 12 Anticipated Environmental Results: the environmental outcomes that are expected as a result of provisions in this regional plan.

Section 13 Cross Boundary Issues: the methods and processes that will be used to identify and address resource management issues that cross the boundaries between districts, and between regional councils.

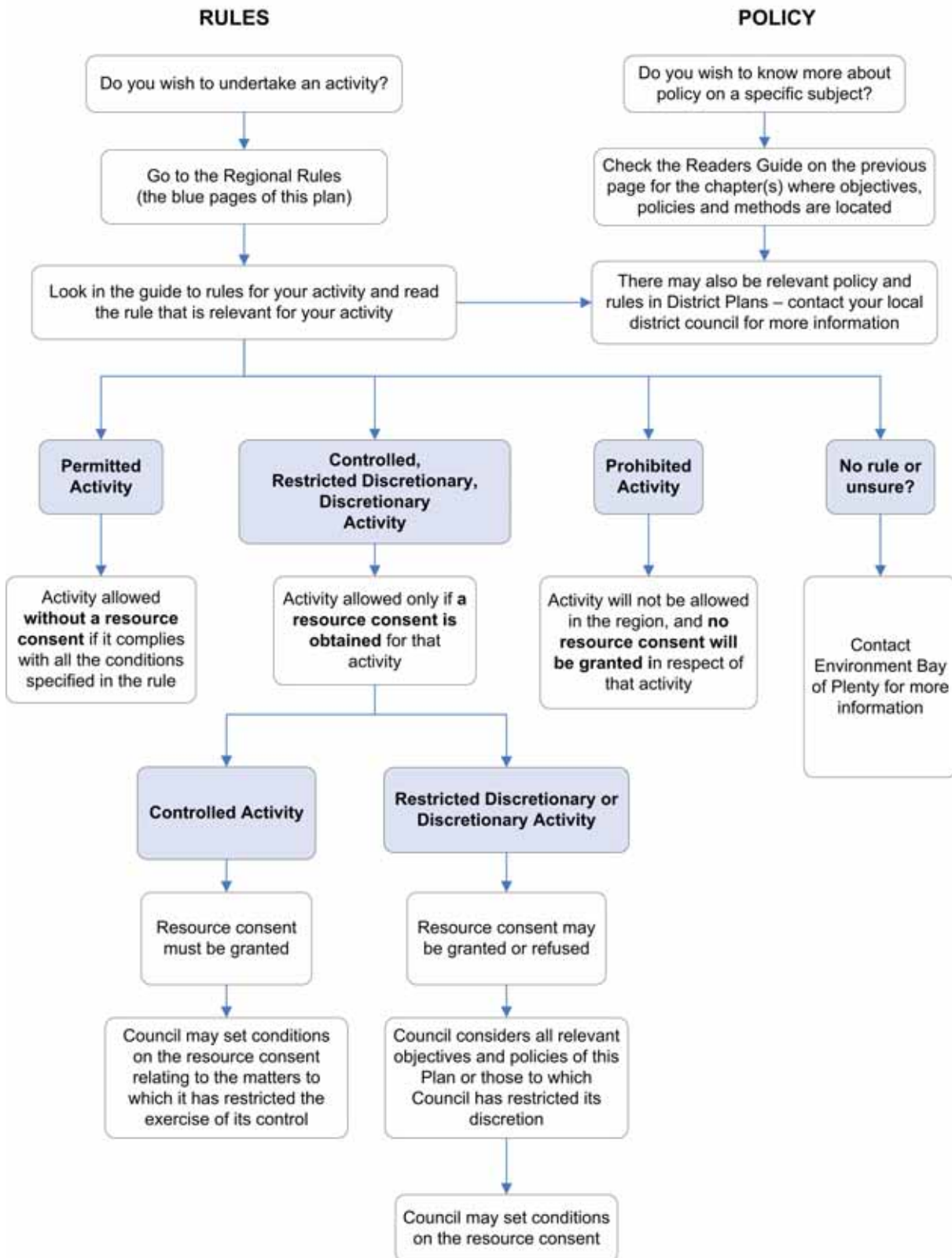
Section 14 Plan Review Process: the process that will be used to review this regional plan, and assess the effectiveness and efficiency of its provisions.

Schedules 1 to 14: Contain more detailed information and data related to the above sections necessary to the provisions and requirements of the regional plan.

Definition of Terms used in this regional plan.

Bibliography

HOW TO USE THIS REGIONAL PLAN



Contents

Part I

1	Introduction	1
1.1	Citation	1
1.2	Scope of Plan.....	1
1.3	Purpose of Plan	5
1.4	Role of Environment Bay of Plenty under the Act.....	6
1.5	Management of Land and Water Resources under the Act	9
1.6	Statutory Acknowledgements	9
1.7	Use of Guidelines and Standards	11
1.8	He Whakamohiotanga mo te Mahere a-Rohe e pa ana ki nga Wai me nga Whenua.....	11
2	Kaitiakitanga.....	15
2.1	Kaitiakitanga.....	18

Part II

3	The Integrated Management of Land and Water.....	27
3.1	Issues.....	27
3.2	Objectives	33
3.3	Policies.....	35
3.4	Methods of Implementation.....	37
3.5	Explanation/Principal Reasons	50
4	Discharges to Water and Land	63
4.1	Discharges of Contaminants or Water to Water, and Discharges of Contaminants to Land	63
4.2	Discharge of Stormwater	75
4.3	Contaminated Land.....	84
5	Water Quantity and Allocation.....	91
5.1	Take and Use of Surface Water and Groundwater.....	91
5.2	Damming and Diversion of Water	108
5.3	Management of Flood Hazards and Land Drainage.....	112
5.4	Control of Water Levels in Natural Lakes	115
6	Beds of Rivers, Streams, Lakes and Wetlands.....	121
6.1	Activities in the Beds of Rivers, Streams and Lakes	121
6.2	Stock in Surface Water Bodies	133
7	Geothermal Resources.....	139
7.1	Geothermal Resources	139
8	Wetlands	155
8.1	Wetlands	155

Part III

9	Regional Rules	165
9.1	Guide to Rules	165
9.2	Land and Soil Disturbance Activities	168
9.3	Grazing and Stock in the Beds of Surface Water Bodies	196
9.4	Discharges of Nitrogen or Phosphorus from Land Use and Discharge Activities in the Rotorua Lakes Catchments	203
9.5	Discharges to Water and Land	219
9.6	Take and Use of Water	242
9.7	Damming and Diversion of Water	248
9.8	Motu River and Specified Tributaries.....	258

9.9	Artificial Control of Water Levels in Natural Lakes	259
9.10	Activities in the Beds of Rivers, Streams, and Lakes	259
9.11	Geothermal Water, Heat or Energy	305
9.12	Wetlands	311

Part IV

10	Financial Contributions	319
10.1	Circumstances, Purpose and Amount	320
10.2	Matters to be considered	322
10.3	General Provisions	323
11	Information to be Submitted with Resource Consent Applications	325
11.1	General Information	325
11.2	Land and Soil Disturbance Activities	325
11.3	Activities Controlled by Rules in Section 9.4	326
11.4	Discharges to Water and Land	326
11.5	Take and Use of Water	326
11.6	Activities in the Beds of Rivers, Streams or Lakes	327
11.7	Geothermal Resources	327
11.8	Wetlands	328
12	Anticipated Environmental Results	329
12.1	Kaitiakitanga	329
12.2	Water Quality	329
12.3	Soil Resources	330
12.4	Water Quantity	330
12.5	Beds of Streams, Rivers and Lakes	331
12.6	Geothermal Resources	331
12.7	Wetlands	331
12.8	Ecosystems	331
12.9	Community Awareness of Environmental Issues	332
13	Cross Boundary Issues	333
13.1	Processes to Address Cross-Boundary Issues	333
14	Plan Review Process	335
	Schedule 1 – Aquatic Ecosystem Areas	337
	Schedule 2 – Fish Spawning and Migration Calendar	353
	Schedule 3 – Watercourses in Land Drainage Schemes with Ecological Values	355
	Schedule 4 – High Risk Facilities	357
	Schedule 5 – Maintenance Areas of River Schemes and Land Drainage Schemes	359
	Schedule 6 – Floodways in the Bay of Plenty	371
	Schedule 7 – Instream Minimum Flow Requirements	373
	Schedule 8 – Approved Quality Assurance Programmes and Environmental Management Plans	375
	Schedule 9 – Water Quality Classification Standards and Criteria	377
1	Natural State (Lake) Water Quality Classification	378
2	Natural State (River) Water Quality Classification	379
3	Managed State (Lake) Water Quality Classification	380
4	Aquatic Ecosystem (Bay of Plenty) Water Quality Classification	380

5	Contact Recreation Water Quality Classification	381
6	Water Supply Water Quality Classification.....	382
7	Modified Watercourses with Ecological Values Water Quality Classification	383
8	Drain Water Quality Classification.....	384
9	Regional Baseline (Bay of Plenty) Water Quality Classification	384
Schedule 10 – Freshwater Bathing Sites		387
Schedule 11 – Lawfully Existing Hydroelectric Power Schemes		389
Schedule 12 – Forestry Operators Accreditation System		391
Schedule 13 – Statutory Acknowledgements in the Bay of Plenty Region		421
Schedule 14 – Standards for the Construction, Reconstruction, Maintenance or Decommissioning of Holes, Bores, Wells and Infiltration Galleries		423
Definition of Terms		425
Bibliography		449
Index.....		451
Appendix 1 – Relevant Rules in Tarawera River Catchment (see inside back cover)		

List of Figures

Figure 1 – Link between Identified Values and Environmental Standards.....	6
Figure 2 – Riparian Area	31
Figure 3 – Lake Water Quality Management Timetable	60
Figure 4 – Lake Action Plans and Regulation	61
Figure 5 – Water Allocation Program	97
Figure 6 – Instream Minimum Flow Requirements Process	107
Figure 7 – Coverage of Rule 16 and 21.....	225
Figure 8 – Measurement of Dam Height in Rule 46.....	253
Figure 9 – Upstream Ramp Design for Drift Decks.....	290
Figure 10 – Typical Cross Section Of The Rangitaiki Floodway	372
Figure 11 – Bed of a River	427
Figure 12 – Types of Wetlands.....	444

List of Maps

Map 1 – Bay of Plenty Region	3
Map 2 – Rotorua Geothermal Field as Covered by the Rotorua Geothermal Regional Plan	141
Map 3 – Geothermal Fields in the Bay of Plenty	145

Map 4 – Upper Kaituna River Scheme Maintenance Area	360
Map 5 – Lower Kaituna River Scheme Maintenance Area	361
Map 6 – Tarawera River Scheme Maintenance Area	362
Map 7 – Rangitaiki River Scheme Maintenance Area I	363
Map 8 – Rangitaiki River Scheme Maintenance Area II	364
Map 9 – Whakatane-Waimana Rivers Scheme Maintenance Area	365
Map 10 – Waiotahi River Scheme Maintenance Area	366
Map 11 – Waioeka-Otara River Scheme Maintenance	367
Map 12 – Lower Kaituna River Major Scheme Drainage Area	368
Map 13 – Waiotahi and Huntress Creek Drainage Districts	368
Map 14 – Rangitaiki Drainage District	369
Map 15 - Rangitaiki Floodway	371

List of Tables

Table 1 – Environment Bay of Plenty’s Functions under the Act	7
Table 2 – Methods of Promoting and Encouraging Sustainable Land and Water Management Practices	38
Table 3 – Promotion of Environmental Programmes	43
Table 4 – Water Quality Classification Criteria	49
Table 5 – Trophic Level Indices (TLI) – Current and Management Goals	51
Table 6 – Explanation of TLI in Objective 11	53
Table 7 – Methods to Manage Lake Water Quality	54
Table 8 – NERMN Modules Relevant to the Regional Plan	56
Table 9 – Lake Water Quality Programme (at 2005)	56
Table 10 – Contaminant Discharge Requirements	67
Table 11 – Responsibilities for Stormwater Management	82
Table 12 – Responsibilities for Contaminated Land	87
Table 13 – Water Allocation Methodology	94
Table 14 – Water Allocation on Surface Water bodies with Hydroelectric Power Schemes	95
Table 15 – Water Management during Drought and Low Flow Events	102
Table 16 – Instream Minimum Flow Requirement Methodology	103

Table 17 – Protection Levels for Aquatic Life.....	105
Table 18 – Environmental Standards for Damming and Diversion Activities	110
Table 19 – Requirements for the Artificial Control of Lake Water Levels.....	118
Table 20 – Potential Adverse Environmental Effects from Activities in, on, under or over the Beds of Streams, Rivers and Lakes	122
Table 21 – Requirements for Activities in, on, under or over the Beds of Streams, Rivers and Lakes	125
Table 22 – Management of the Effects of the Use and Development of Geothermal Resources	142
Table 23 – Geothermal Resource Allocation Methodology.....	146
Table 24 – Management of the Discharge of Geothermal Water	146
Table 25 – Classification of Geothermal Fields	150
Table 26 – NERMN modules relevant to Geothermal Resources	153
Table 27 – Responsibilities for Wetland Management.....	162
Table 28 – Permitted Limits for Earthworks and Quarries	169
Table 29 – Controlled Earthworks.....	172
Table 30 – Restricted Discretionary Earthworks and Quarries	174
Table 31 – Riparian Retirement Distance	180
Table 32 – Permitted Vegetation Clearance in the Riparian Management Zone	181
Table 33 – Permitted Threshold Limits for Forestry Earthworks by Accredited Operators	186
Table 34 – Permitted Limits for Clearance of Vegetation by Burning.....	190
Table 35 – Locations Where Cultivation is Not Permitted (Discretionary activity under Rule 5A)	194
Table 36 – Rules in Rotorua Lakes	204
Table 37 – Section 9.4 Activities and Associated Rules.....	205
Table 38 – Rule 11A-11E Mandatory Review Clause.....	206
Table 39 – Rule 11B Nutrient Benchmark Information Requirements	210
Table 40 – Rule 11C Nutrient Benchmark Information Requirements	212
Table 41 – Agrichemical Application in Riparian Areas	224
Table 42 – Rules for Damming and Diversion Activities	249
Table 43 – Rules for Structure and Bed Disturbance Activities	260
Table 44 – Streams and Rivers for Rule 70A	299
Table 45 – Exclusion Periods for Canal Maintenance Works	302

Table 46 – Circumstances and Purposes of Financial Contributions.....	320
Table 47 – Whitebait and Juvenile Migration Summary	354
Table 48 – Spawning Summary	354

Flow Diagrams

Flow Diagram 1 – Earthworks and Quarries	176
Flow Diagram 2 – Vegetation Clearance	185
Flow Diagram 3 – Forest Harvesting and Earthworks	189
Flow Diagram 4 – Clearance of Vegetation by Burning.....	193
Flow Diagram 5 – Cultivation	196
Flow Diagram 6 – Stock in the Bed of a River or Stream	200
Flow Diagram 7 – Controlled Stock Crossings	202
Flow Diagram 8 – Discharges and Land Use Activities in the Rotorua Lakes Catchments	218
Flow Diagram 9 – Stormwater Discharges.....	237

List of Abbreviations and Acronyms

Act/The Act	Resource Management Act 1991
AEP	Annual Exceedance Probability
CSC	Comprehensive Stormwater Consents
Environment Bay of Plenty	Bay of Plenty Regional Council
IFIM	Instream Flow Incremental Methodology
IMFR	Instream Minimum Flow Requirement
LTCCP	Long Term Council Community Plan
MALF	Mean Annual Low Flow
NERMN	Natural Environment Regional Monitoring Network
NZTA	New Zealand Transport Agency
OSET Plan	On-Site Effluent Treatment Regional Plan
RHYHABSIM	River Hydraulic Habitat simulation
The/this regional plan	Regional Water and Land Plan
TLI	Trophic Level Index
WMA	Wetland Management Agreement

