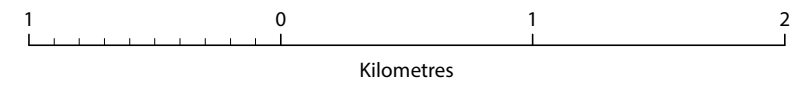
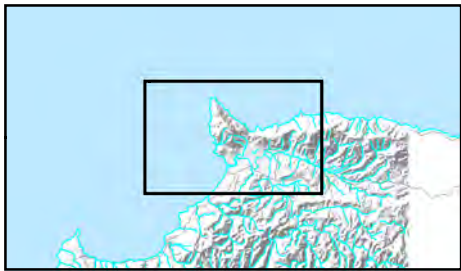
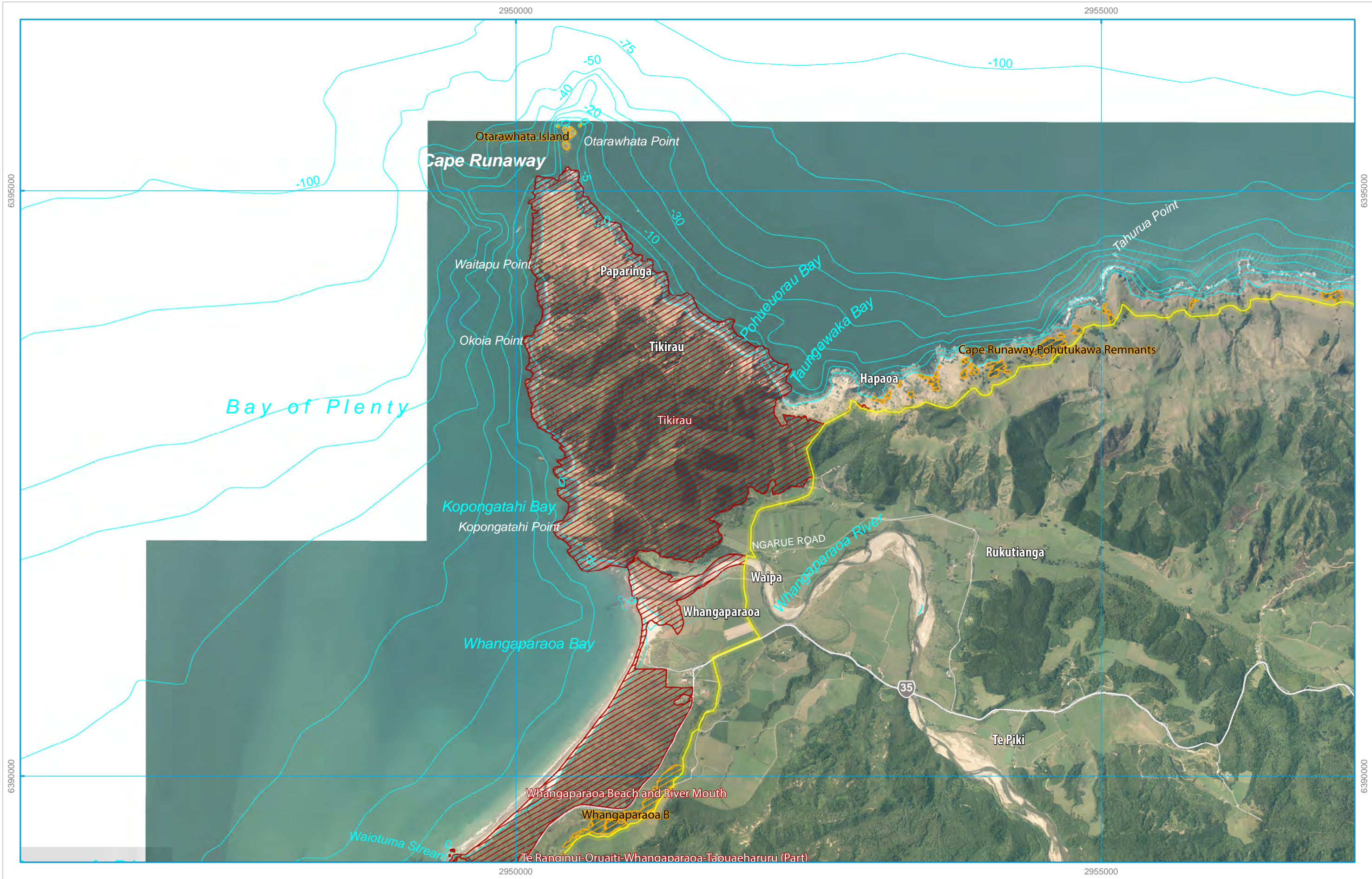


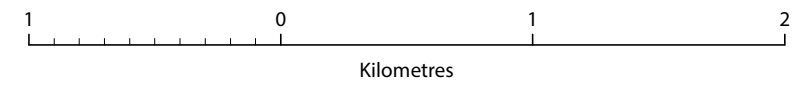
Projection and Grid Information
 This map is drawn on the New Zealand Map Grid Projection, a minimum error conformal projection. The grid is the New Zealand Map Grid, showing co-ordinates in metres in terms of the Geodetic Datum 1949, based on the International (Hayford) Spheroid.
 Copyrights
 © Statistics NZ
 © Sourced from Land Information New Zealand data.
 CROWN COPYRIGHT RESERVED.
 © Bay of Plenty Regional Council 2013



38a_Whangaparaoa/Cape Runaway Proposed Regional Coastal Environment Plan - Landscape

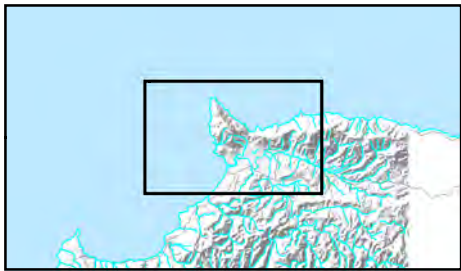
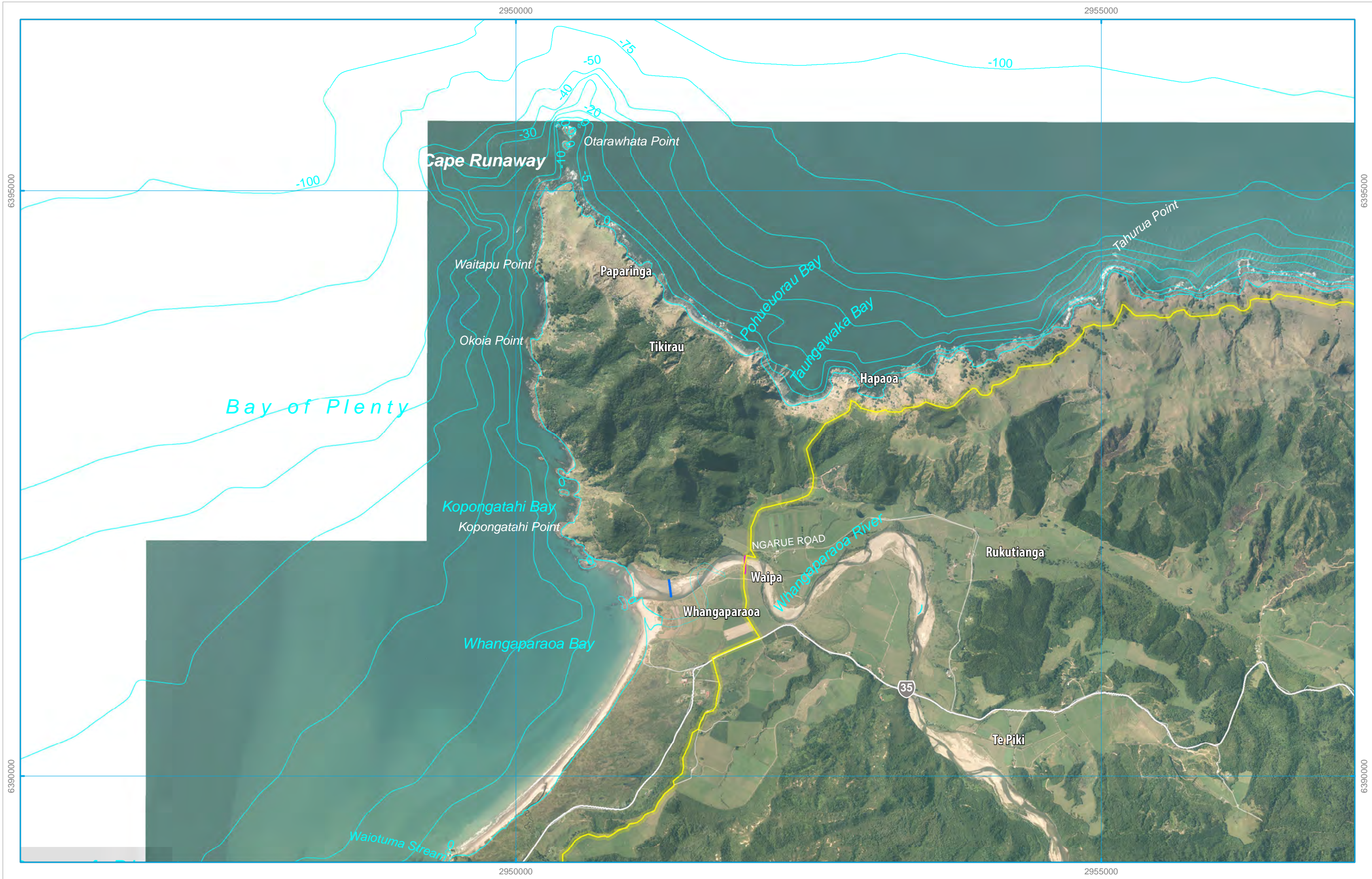


Projection and Grid Information
 This map is drawn on the New Zealand Map Grid Projection, a minimum error conformal projection. The grid is the New Zealand Map Grid, showing co-ordinates in metres in terms of the Geodetic Datum 1949, based on the International (Hayford) Spheroid.
 Copyrights
 © Statistics NZ
 © Sourced from Land Information New Zealand data.
 CROWN COPYRIGHT RESERVED.
 © Bay of Plenty Regional Council 2013

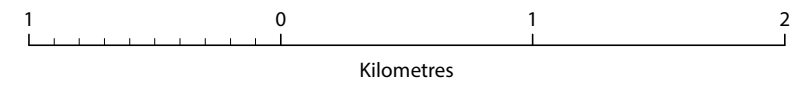


38b_Whangaparaoa/Cape Runaway Proposed Regional Coastal Environment Plan - Ecological

Published April 2014
 GIS_459085



Projection and Grid Information
 This map is drawn on the New Zealand Map Grid Projection, a minimum error conformal projection. The grid is the New Zealand Map Grid, showing co-ordinates in metres in terms of the Geodetic Datum 1949, based on the International (Hayford) Spheroid.
 Copyrights
 © Statistics NZ
 © Sourced from Land Information New Zealand data.
 CROWN COPYRIGHT RESERVED.
 © Bay of Plenty Regional Council 2013



38c_Whangaparaoa/Cape Runaway Proposed Regional Coastal Environment Plan - Use

Published April 2014
 GIS_459085