

Board Members

Land Use Futures Board



NOTICE IS GIVEN that a meeting of the **Land Use Futures Board** will be held in Committee Meeting Room 2 at Rotorua District Council, 1061 Haupapa Street, Rotorua on:

Wednesday, 10 March 2010

commencing at 10.00 am

Terms of Reference

Land Use Futures Board

- 1 The primary purpose of the Board is to give leadership to and advise on implementing sustainable land use management and change in the Rotorua Lakes Catchments that will achieve the land based component of nutrient reduction targets defined through the various action plans.
- 2 Sustainability includes the economic, social, cultural and environmental wellbeing of the community.
- 3 The primary reporting relationship of the Board shall be to the Rotorua Te Arawa Lakes Strategy Group (RTALSG). In addition to reporting to the RTALSC, the Board will also give updates on target achievement to the appropriate action plan working parties. Dependent on the actions recommended, they may need to be further considered separately by the organisations that make up the RTALSG.
- 4 Reporting will be through the Manager Land Resources (Rotorua) who will ensure appropriate administrative services are available to the Board.
- 5 The Board shall consider and advise on:
 - The development and regular review of an implementation plan to achieve reduced nutrient loss from land use activity. The initial plan to be prepared by March 2008 outlining mitigation options and timing.
 - Relevant nutrient mitigation research, both current work and potential i.e. gap analysis.
 - Evaluate and recommend land management options, including incentives that may assist in achieving land use management change.
 - Actual or potential impediments to achieving nutrient reduction targets, including planning regimes implemented by the Regional and District Council.
 - Advise on the development of a Communication Plan to communicate with and receive feedback from the range of landowners. Environment Bay of Plenty and Rotorua District Council will support and integrate the Plan into its overall programme for the Protection and Restoration of the Rotorua Lakes.
 - Advise on the development of regulations and Statutory Planning Policy of Environment Bay of Plenty and Rotorua District Council including possible changes to these regimes.
 - Any other matters that the Board considers necessary to achieve nutrient reduction targets in a sustainable manner.
- 6 The Board shall not engage consultants to carry out research or otherwise enter into financial or contractual commitments with other parties. Recommendations that require funding, including research, will need to go through normal approval and funding channels of the respective councils.
- 7 The Land Use Technical Advisory Group will be a source of technical advice. The Board may request other advice or invite third parties to attend its meetings, subject to the constraints in 4 of these Terms of Reference.
- 8 The Board shall elect its own chairperson, meet regularly (not less than quarterly), keep accurate meeting records and present an annual report to the RTALSG.

- 9 The Board shall endeavour to operate by consensus.
- 10 The initial appointment is for a period of 3 years upon when time members can be nominated.
- 11 Board may establish sub-committees which may include external members to address specific topics.

Land Use Futures Board

Board Membership

Chairman:	R Vallance (Vallance Consulting Ltd.)
Members:	P Guerin (Rotorua District Council) J Ford (Sheep Farmer Representative) R Mihinui (Te Arawa Lakes) P Nelson (DairyNZ) C Sutton (Dairy Farmer Representative) K Richards (Forestry Representative) N Heather (Sheep Farmer Representative) Dr N Edgar (NZ Landcare Trust) J Chan (Meat and Wool New Zealand) T Walters (Te Arawa FOMA) S Morrison (Dairy Farmer Representative) T Ngatai (Office of the Maori Trustee) W Murray (Environment Bay of Plenty) B Cleghorn (Lifestyle Representative)
Secretary:	Jenny Clarke

Agenda

		Page Number
1	Apologies	
2	Confirmation of Minutes of the Land Use Futures Board – 10 March 2010 (10.05 am – 10.10 am)	1-3
3	Matters Arising from Previous Minutes (10.10 am – 10.25 am)	
4	General Business and Tabled Items (10.25 am – 10.30 am)	
5	Update on presentation of Position Paper to RTALSG (10.30 am – 10.40 am)	
6	Facilitated workshop – Discussion on Regional Policy Statement (RPS) – Tony Fenton (10.40 am – 1.30 pm)	4-6
	Lunch served at 12.00 pm	

Consideration of General Business Items

Land Use Futures Board

Rotorua District Council – Committee Room 2
1061 Haupapa Street, Rotorua

10.00 am, 10 February 2010

Chair: Bill Cleghorn (Lifestyle Representative)

Members: Roku Mihinui (Te Arawa Lakes); John Ford (Sheep Farmer Representative); Chris Sutton (Dairy Farmer Representative); Kit Richards (Forestry Representative); Neil Heather (Sheep Farmer Representative); Stuart Morrison (Dairy Farmer Representative)

In Attendance: Nigel Wharton (Rotorua District Council); Greg Corbett, Anna Heap, Martin Butler, (Environment Bay of Plenty); Hera Naera (on behalf Tina Ngatai, Office of the Maori Trustee, arrived 11.25 am); Mike Bramley (on behalf Penny Nelson, DairyNZ); Jenny Clarke (Minutes Secretary) (Environment Bay of Plenty); Gail Hudson (on behalf Tom Walters, Te Arawa FOMA); Kate Akers, Monica Peters (on behalf Nick Edgar, NZ Landcare Trust), Barnett Vercoe

Item	Discussion/Decision	Action	Responsibility/ Timeframe
1. Apologies	Richard Vallance (Vallance Consulting), Warwick Murray (Environment Bay of Plenty), Nick Edgar (NZ Landcare Trust); Tom Walters (Te Arawa FOMA); Peter Guerin (Rotorua District Council) Hera Naera (lateness)	Receives the apologies	Kit/John (CARRIED)
2. Confirmation of minutes from last meeting	Confirmation of minutes from 9 December 2009	Accepts the minutes	Neil/Stuart (CARRIED)
3. Matters arising from previous minutes	Action point feedback from previous meeting: 1. Send card and flowers to Rick and family (Bill C/Jenny) – completed 2. Invite EBOP planners Martin/Nassah to present Draft RPS (Anna) – planners presenting today, refer Agenda item 7 3. Circulate draft RPS when available in new year (Anna) – completed		

	<p>4. Arrange site visit for members to view Maori land use initiatives (Greg/Tina N) – this has been postponed, a new date will be advised soon</p> <p>5. Discuss replacement for Meat & Wool vacancy at February meeting (Greg) – refer Agenda item 6</p> <p>6. Discuss inclusion of Rule 11 information in property files with RDC (Andy) – Update given by Anna. It has been suggested, but not yet confirmed with RDC, that a note is put onto files to alert potential purchasers that the property is under Rule 11. No benchmarking figures would be included with the note.</p> <p>7. Adopt Position Paper and place it before RTALSG in February 2010 – refer Agenda item 5</p>		
4. General business and tabled items	<p>Tabled items: A note was made that Tom Walters wished to table a submission regarding growing water cress. This is not of concern for the Board meeting, but will be forwarded to RTALSG.</p> <p>“Tabled item 1 Submission regarding Resource Consents for growing water cress - Tom Walters - LUFB meeting 10 February 2010 (A411720)”</p>		
5. Presentation of Position Paper to RTALSG	<p>It was generally agreed that a representative (Bill Cleghorn) of the Board present the paper at the RTALSG meeting on 1 March 2010. It was informed that Greg is writing a covering letter for the Position Paper to be included in the RTALSG agenda.</p>	1. Email Board of RTALSG meeting time on 1 March 2010	Greg
6. Board member vacancies	<ul style="list-style-type: none"> • Meat & Wool – have advised they are not in a position to replace Jessie Chan. It was suggested that the Meat & Wool position be allocated to a local farm advisor. • Dairy NZ have requested that Mike Bramley replace Penny Nelson – this is being recommended to RTALSG • Barnett Vercoe be accepted as the new Māori land block representative – this is being recommended to RTALSG 	2. Request RTALSG approval for a local farm advisor replacement for Meat & Wool	Greg

<p>7. RPS Planning update</p> <p>LUNCH</p>	<p>A presentation was given to explain the release for comment of the Draft Next Bay of Plenty Regional Policy Statement (RPS) by Martin Butler (Regional Planner) and Anna Heap (Lakes Project Manager).</p> <p>The RPS gives direction to the regional and district plans. There was a discussion regarding, in particular:</p> <ul style="list-style-type: none"> • “enhanced water quality” is an insufficient objective • definition of the issue as “agriculture runoff” impact of water quality on slide 6 should be generalised to refer to “land use nutrient discharge”. <p>It was advised that comments are required by 1 April 2010. Comments can be made individually by individual sector groups and/or as a collective comment by the Board (to be discussed at the March meeting). It was suggested that Tony Fenton be invited to facilitate this.</p>	<p>3. Arrange Tony Fenton as facilitator to discuss collective comment towards RPS at March meeting</p>	<p>Greg</p>
<p>Consideration of General Business Items</p>	<p>Discussion of timeline priority for further options in Strategy paper (page 10):</p> <ol style="list-style-type: none"> 1. Identify the extent of inequity that has been established for underdeveloped land by the introduction of Rule 11, explore solutions to provide economic opportunities to underdeveloped land. 2. Discuss and determine options to incentivise suitable land use change. 		

Meeting finished at 12.00 pm

Draft Next Bay of Plenty Regional Policy Statement

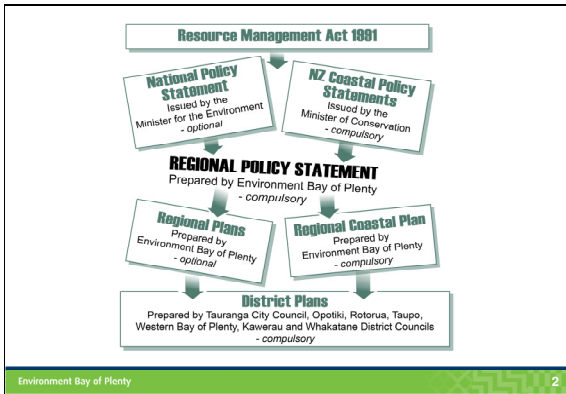
Presentation to Land Use Futures Board 10 February 2010 by
Anna Heap, Lakes Project Manager
Martin Butler, Regional Planner

Working with our communities for a better environment

Regional Policy Statement (RPS)

- Resource Management Act 1991
- Achieve purpose of the Act through integrated management
- Must have RPS at all times
- Operative since December 1999
- Reviewed after ten years
- Regional Council adopted Draft RPS on 15 December 2009

Environment Bay of Plenty

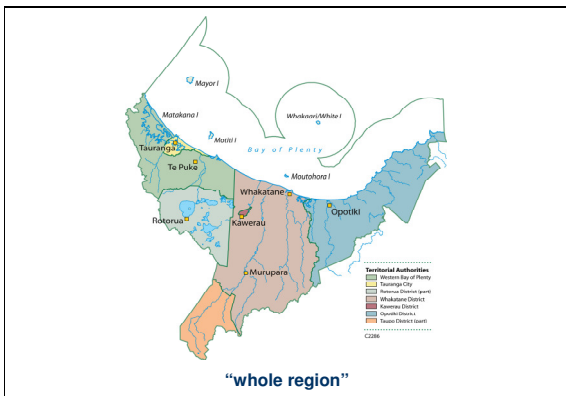


Regional Policy Statement Purpose

Section 59 Purpose of an RPS:
to achieve the purpose of the Act by

- providing an overview of the resource management issues of the region and
- policies and methods to achieve integrated management of the natural and physical resources of the whole region.

Environment Bay of Plenty



Integrated Management: RPS & Plans

- Regional and district plans must *give effect to* the RPS
- Regional council preparing regional policy statement must take into account any relevant planning document recognised by an iwi authority

Environment Bay of Plenty

Next RPS

- Cutting edge
- Focus on highly significant issues: e.g. lakes
- Address gaps
- Integrate RPS, regional & district plans

Environment Bay of Plenty

Significant issue for Rotorua Lakes

- Agricultural discharges of nitrogen and phosphorus are a significant contributor in reducing water quality in the majority of the lakes of the Rotorua district.

Environment Bay of Plenty

Objectives

19. The quality of water in the region is maintained and where necessary enhanced to meet the identified values associated with its required use and protection.
20. Enhance the water quality in the lakes of the Rotorua district and other priority catchments.

Priority catchments:

- are Lakes
- Rotoiti,
 - Rotorua,
 - Rotoehu,
 - Okaro, and
 - Okareka
- or other water bodies to be defined in the Regional Water and Land Plan.

Policy 20: Establishing contaminant discharge limits for priority catchments

Regional plans shall include policies, rules and methods of implementation that:

- (a) Establish limits for the total amount of specified contaminants, including nitrogen and phosphorus, that can be discharged in priority catchments in the region without compromising the ecology, mauri, fishability, swimability, aesthetics and where appropriate the trophic state of a catchment's waterbody.
- (b) Require land use consent for a change in land use that is likely to discharge increased amounts of nominated contaminants in priority catchments.

Policy 22: Facilitating land-use change

Regional and district plans shall facilitate land-use change to significantly reduce discharges of contaminants, including nitrogen and phosphorus, from land uses, subdivision and development activities.

Policy 24: Allocation of nutrient discharge levels

Regional plans to include rules for the allocation of an acceptable level of nutrient discharge within Lake Rotorua and other priority catchments.

Policy 25: Managed reduction of nutrient discharges

Regional plans shall require a managed reduction of nutrient discharges in excess of the assimilative capacity of the receiving water bodies for priority catchments.

Policy 26: Capping nutrient discharges in non-priority lake catchments

There shall be no increase in controllable nutrient discharges to Lakes Rotomā, Ōkātina, Tarawera, Tikitapu, Rotokakahi, Rerewhakaaitu and Rotomahana beyond 30 June 2008 levels.

Next RPS Coverage

Significant resource management issues for the region and iwi authorities, e.g.:

- Fresh water and Rotorua lakes
- Rotorua air quality
- Infrastructure and growth management
- Coastal environment
- Matters of national importance
- Natural hazards
- Statutory acknowledgments

Example: Lakes Water Quality

- Managing the effect of land use on water quality: A carrot and stick approach
- Land use change
 - Encourage desirable change
 - Prevent harmful change: Regulate
- Existing land use
 - If harmful, encourage best practice
 - Resistance to change? Regulate

RMA tools

RPS directs regional plans & district plan, influences resource consents:

- Regional Water & Land Plan:
 - Controls nutrient discharges
 - Can control land use
- District Plan:
 - Can control the effects of land use
 - Should enable desirable land use change
- Resource consents:
 - should address all effects

Draft RPS Provisions

Land Use and Water Quality Policies

- Approach is to seek to reduce nutrient run-off in priority lake catchments, and maintain nutrient discharge levels in other waterbodies
- This will happen through Rotorua District Plan – enabling land use change – and Regional Water and Land Plan



RPS preparation timing

- March 2008 – commenced consultation with iwi and territorial authorities
- July 2008 – commenced consultation with targeted stakeholders
- Sept 08 to December 09 – prepared draft RPS content
- April to August 2010 – finalise RPS research and documentation, legal review
- Late 2010 – Publicly notify for formal submission

Make an impact on the next RPS

- We want feedback
- Verbal and written
- Available for follow up
- Draft RPS out now
- Comment by 1 April
- Risks of not having a say
 - opportunity for formal submissions later



Key contacts – free phone or email

Phone: 0800 368 288 then enter ext number:

Email:

- Nassah.Steed@envbop.govt.nz (or ext 9329)
- Anna.Heap@envbop.govt.nz (or ext 7494)
- Martin.Butler@envbop.govt.nz (or ext 9320)
- David.Phizacklea@envbop.govt.nz (or ext 8327)

Discussion and questions?



Resource Management Act S5 Purpose

- (1) The purpose of this Act is to promote the sustainable management of natural and physical resources.
- (2) In this Act, **sustainable management** means managing the use, development, and protection of natural and physical resources in a way, or at a rate, which enables people and communities to provide for their social, economic, and cultural wellbeing and for their health and safety while—
 - (a) Sustaining the potential of natural and physical resources (excluding minerals) to meet the reasonably foreseeable needs of future generations; and
 - (b) Safeguarding the life-supporting capacity of air, water, soil, and ecosystems; and
 - (c) Avoiding, remedying, or mitigating any adverse effects of activities on the environment.