

Figure 7: Otama Beach – Looking west. Core site OT 1 showing wetland behind dunes and the end of transect line.

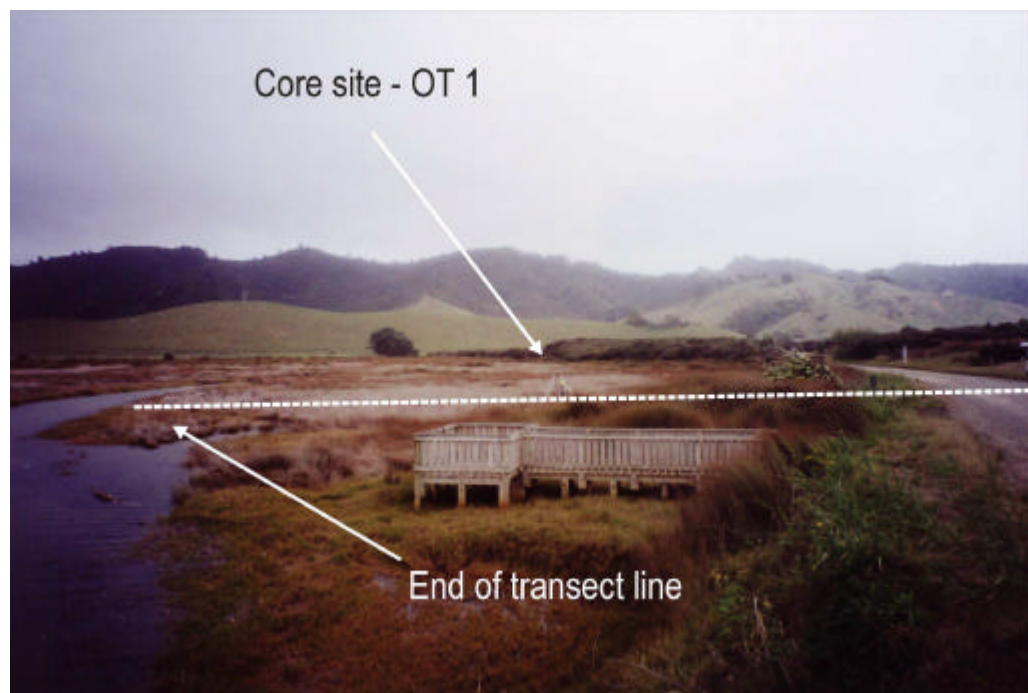


Figure 8: Otama Beach – exposure of pebble veneer. This is the more distant of the two sites shown in Figure 6. Ellipse marks the approx. area of main concentration in the photo.



Figure 9: Otama Beach – Core OT1 stratigraphy showing possible subsidence and flood (refer to Figure 14 for legend of core stratigraphy).

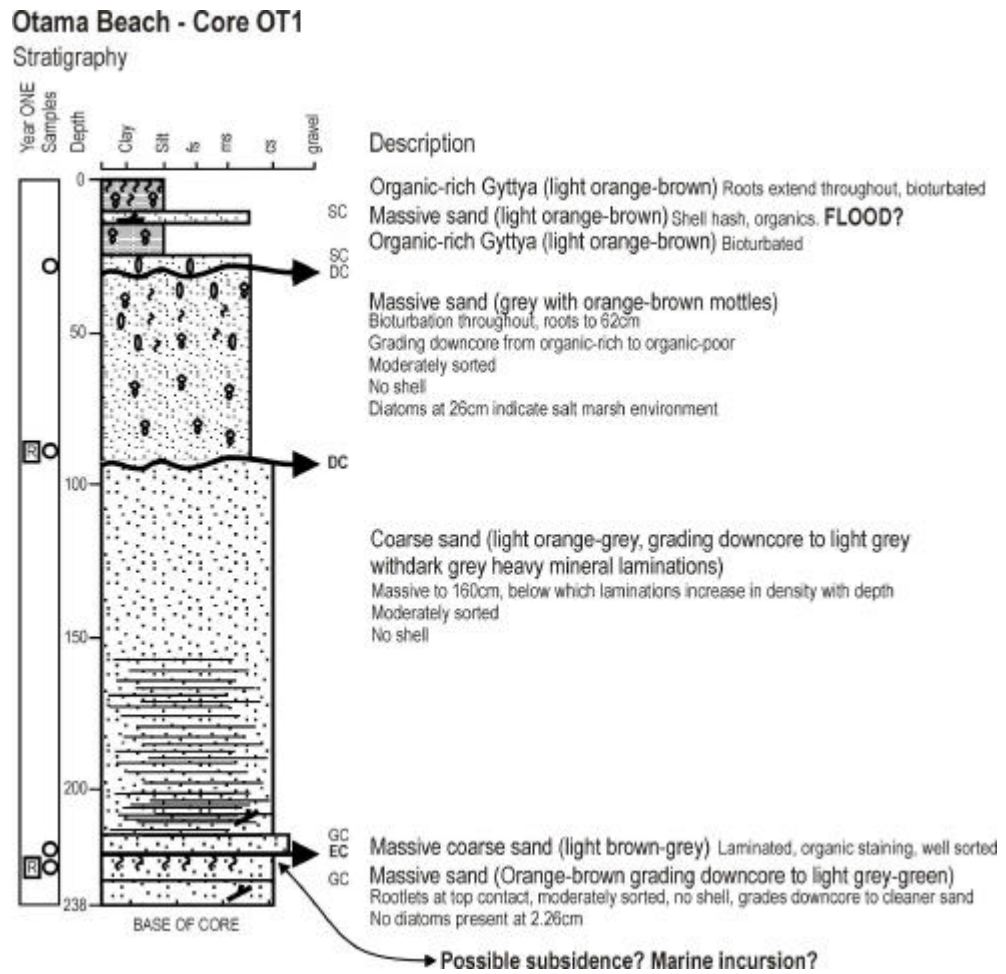


Figure 10: Otama Beach – ground survey and GRP line showing position of pebbles, core OT1 and the strong reflector of heavy minerals.

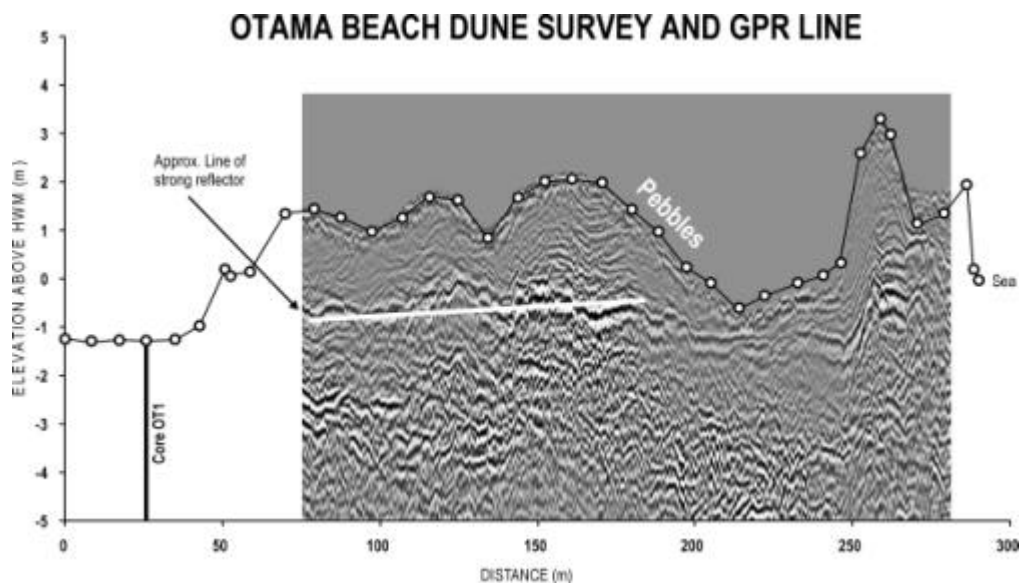


Figure 11: Opito Bay – Papatai Point with large boulder of transported shore platform overlying existing rocky shore platform.

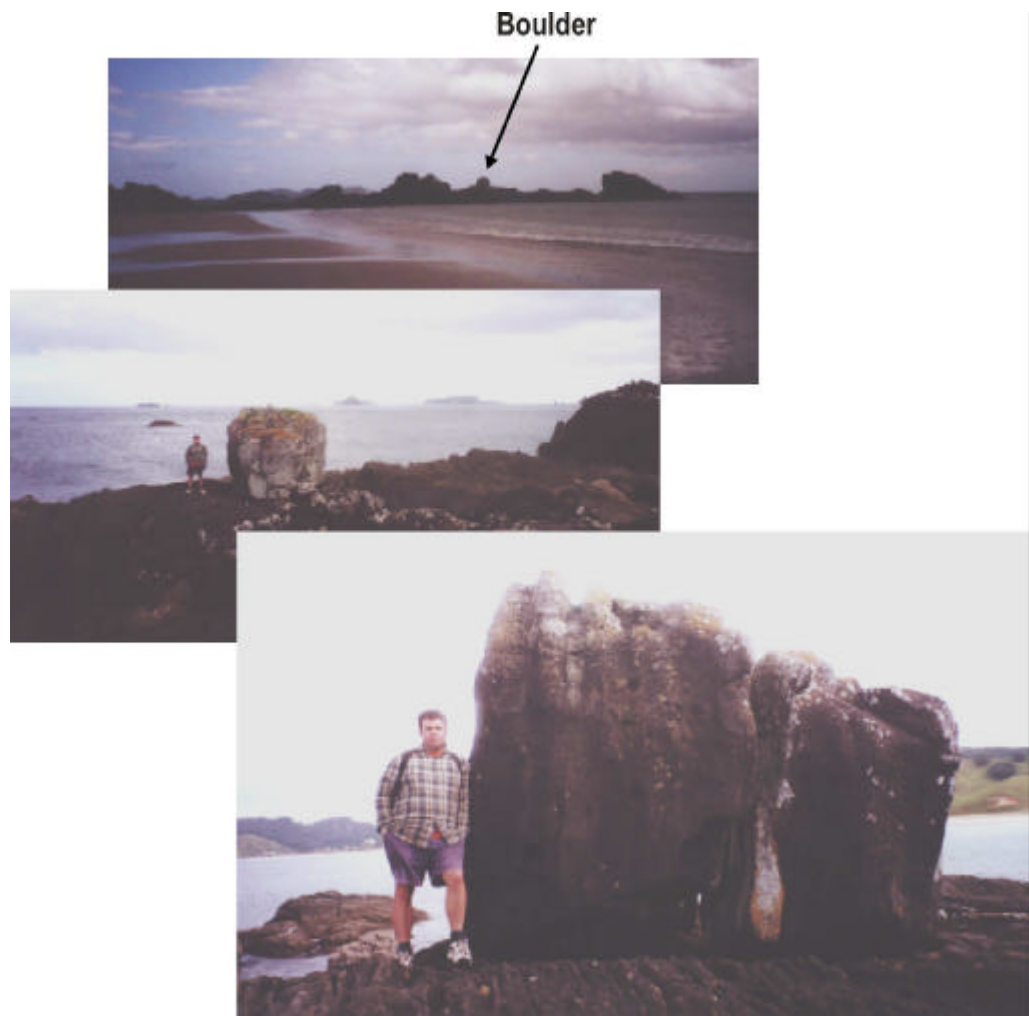


Figure 12: Waihi Beach – Study area viewed from Bowentown to the east.



Figure 13: Waihi Beach – Transect along east side of Emerton Road. Photo looking towards the sea. Wetland formed in estuary of Waiau River.



Figure 14: Waihi Beach – Core WAI 1 stratigraphy showing “Chaotic Unit” and possible subsidence.

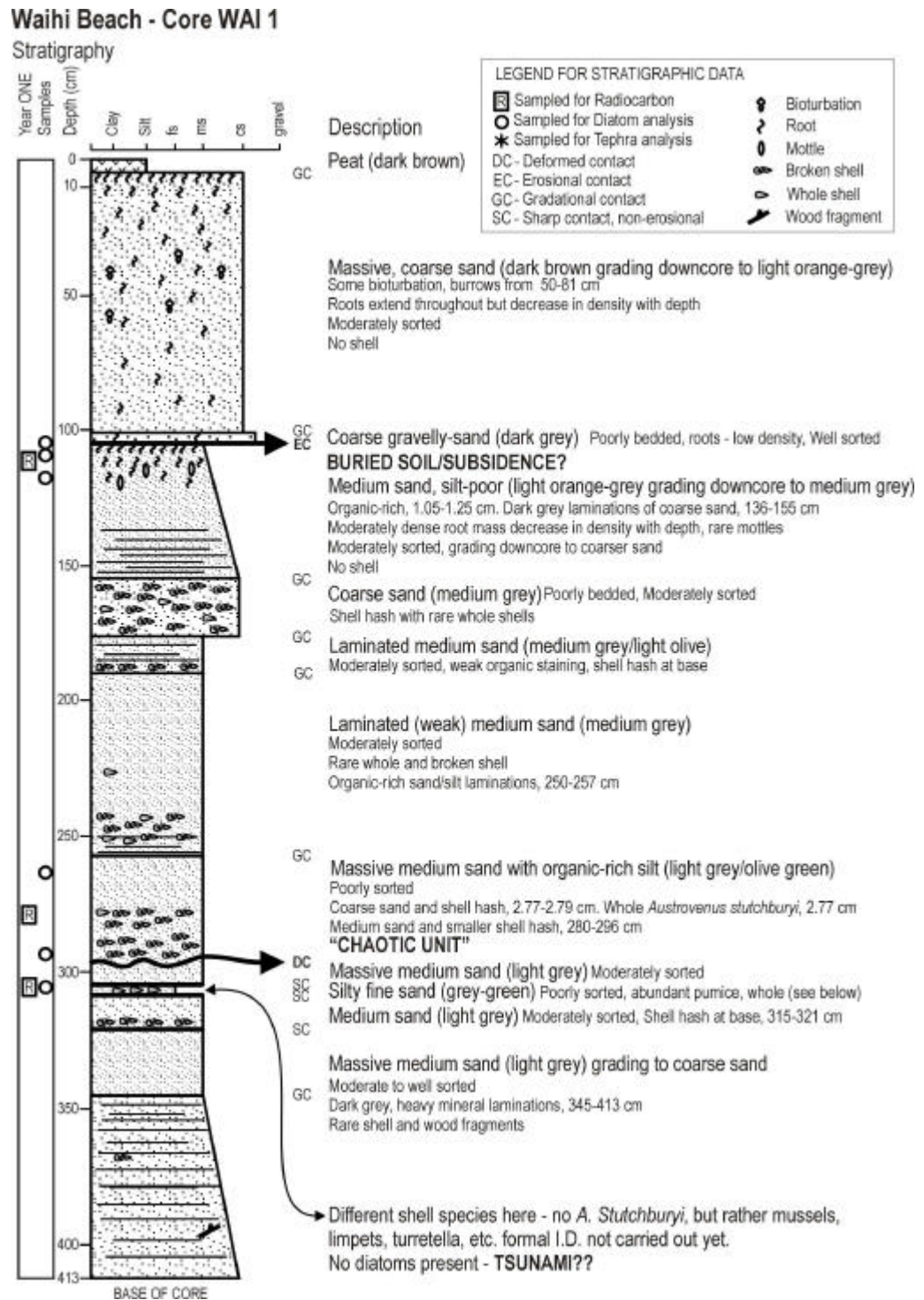


Figure 15: Waihi Beach – Detail of Core WAI 1 from approx. 2.50-3.10 m showing chaotic layer and possible tsunami deposit (unclear in photo) – refer to Figure 14 for details.



Figure 16: Nukuhou River core site: Panoramic view looking east – van for scale.



Figure 17: Ohiwa Harbour – Stoney Brook study site adjacent to Reeves Road.

