

Ngati Rangiwewehi Rohe, Resources and People

13 Dec 2011

IWI DEVELOPMENT

- Key role in;
 - ✓ Treaty of Waitangi Claims Settlement processes: Sites of Significance mapping
 - ✓ Ensuring the sustainable development and use of our natural & physical resources
 - ✓ Planning & implementation of the Iwi Strategic Plan and Iwi Environmental Management Plan policies, objectives and action plans

12/11/2011

Ngati Rangiwewehi GIS

- Benefits
 - ✓ Complex information easier to understand when presented in a visual format
 - ✓ Aligns with our way of looking at ourselves in relation to the whenua
 - ✓ Has been integral in clearly articulating to external agencies Iwi interests and issues
- Costs
 - ✓ Data acquisition can be very expensive\$\$\$ and on-going!
 - ✓ Software licensing & maintenance of hardware
 - ✓ GIS technical expertise

12/11/2011

Ki Uta

(FROM THE INTERIOR)

Ki Tai

(TO THE COAST)

12/11/2011

Ngati Rangiwewehi Mapping Project

Ngati Toka Topographic

Ngati Rangiwewehi – Ancestral Rohe

12/11/2011

RANGIWEWEHI-KI-UTA

INTERIOR LAND INTERESTS

12/11/2011

Tarimano Marae, Te Awahou (The Centre of *our* Universe!)



Tawakeheimoa = Te Aongahoro
|
Rangiwehi



12/12/2011



Ngāiwi Rangiwehi

Tarimano Marae
Awahou

N

12/12/2011

TUTAPA TE WHENUA! REDEFINING OUR BORDERS

12/12/2011

No straight lines!

Very rare to find straight lines in the natural environment

FINDINGS: We are defining ourselves based on Native Land Court findings - the land in relation to us
Western paradigm – the ‘I’ is greater than the ‘We’

RATHER THAN AN...
Indigenous Paradigm: Us in relation to the land

Q. How did ‘they’ (tupuna) define themselves when relating to their whenua/places of import?

“Mai Maketu ki Tongariro”
“Mai nga Kuri-a-Whare ki Tihirau”

Catchment-focussed - people of the land

12/12/2011

TE HAU-KAINGA O TE AWAHOU

Identified by the people, for the peoples
Places of very high significance... within our space



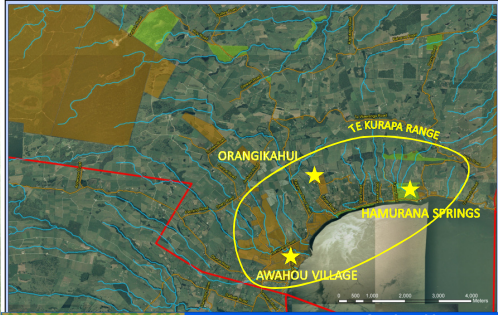
Ngāiwi Rangiwehi

Awahou Village

12/12/2011

MAI-AWAHOU-KI-TE KURAPA...

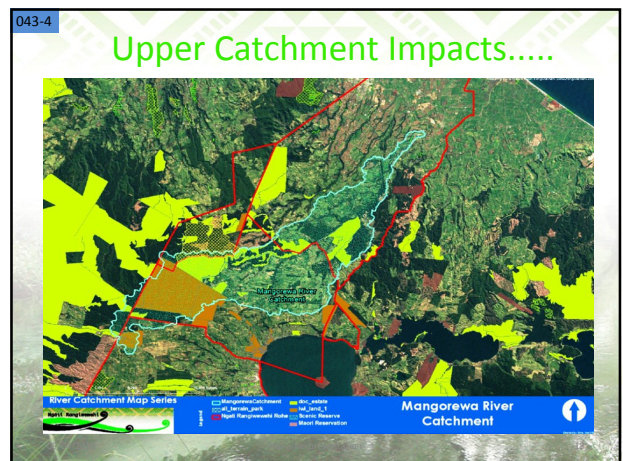
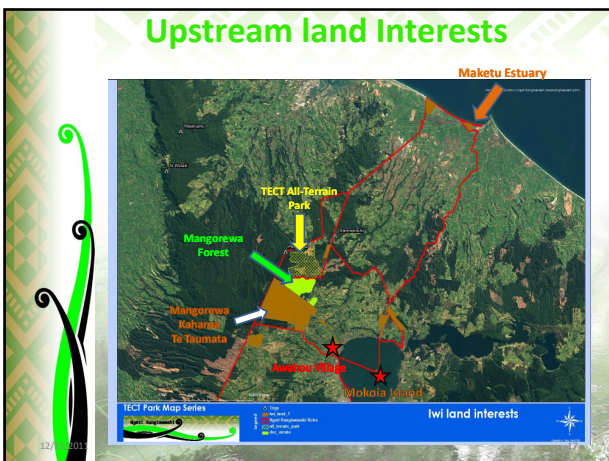
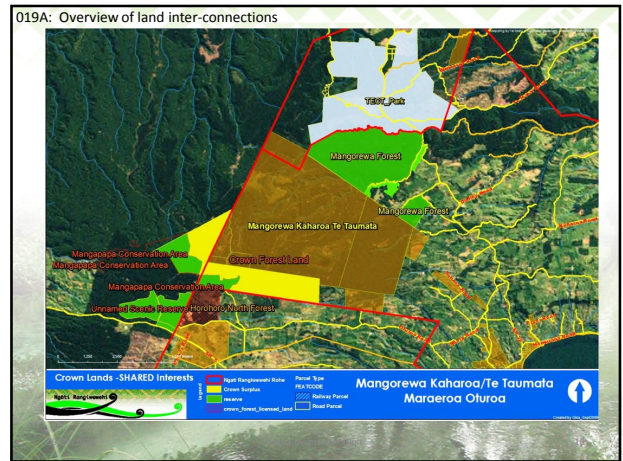
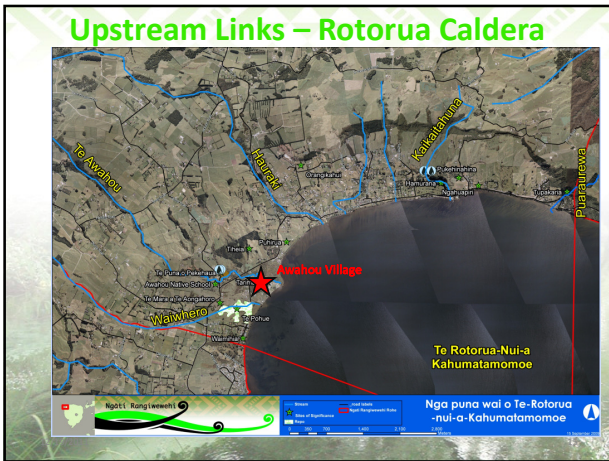
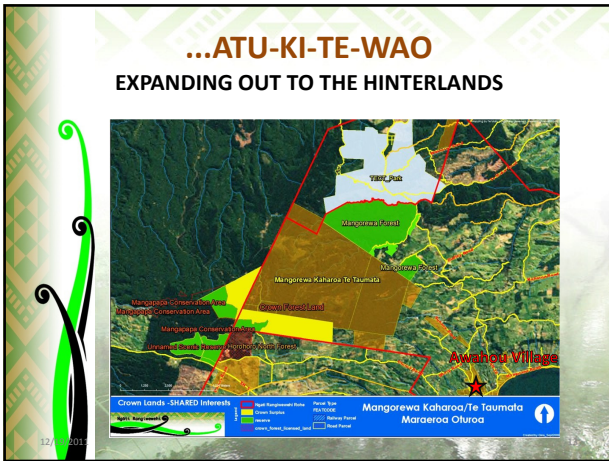
THE WIDER ENVIRONS OF NGĀIWI RANGIWEHI



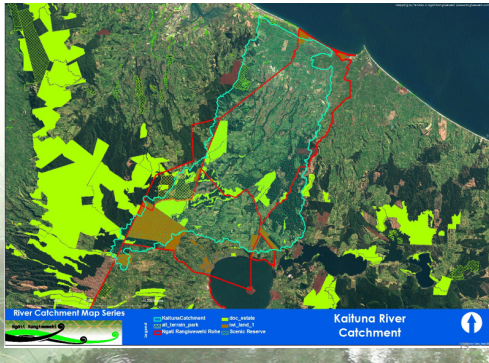
Ngāiwi Rangiwehi

Awahou ki
Kaikaitahuna

12/12/2011



Upper Catchment Impacts.....



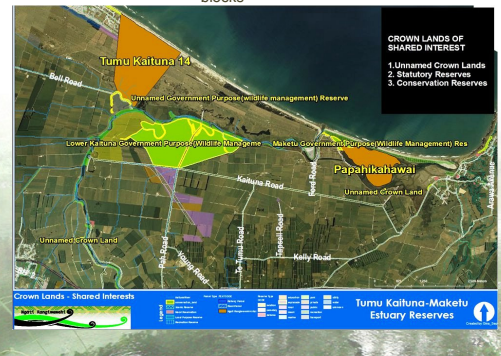
Downstream Effects....



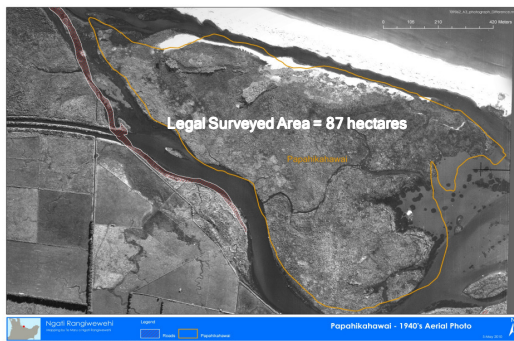
RANGIWEHEHI-KI-TAI COASTAL LAND INTERESTS

LOWER KAITUNA – MAKETU ESTUARY

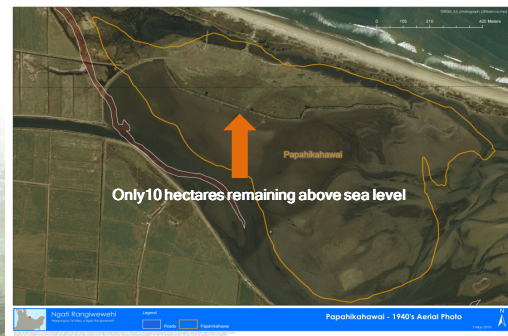
Shared land interests include: Tumū Kaituna 14 and Papahikahawai, also into the Whakapoukorero and Pukaingataru blocks

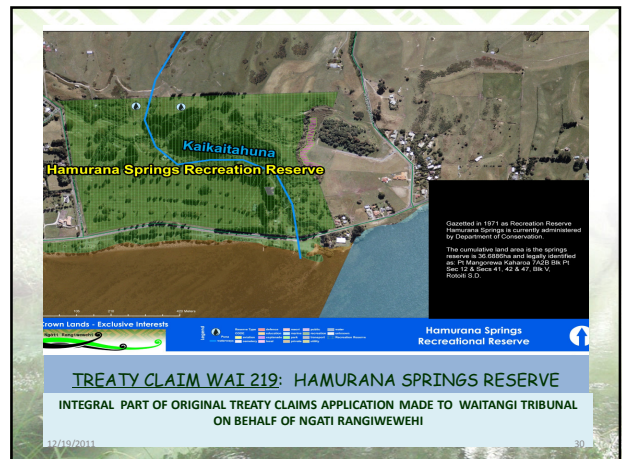
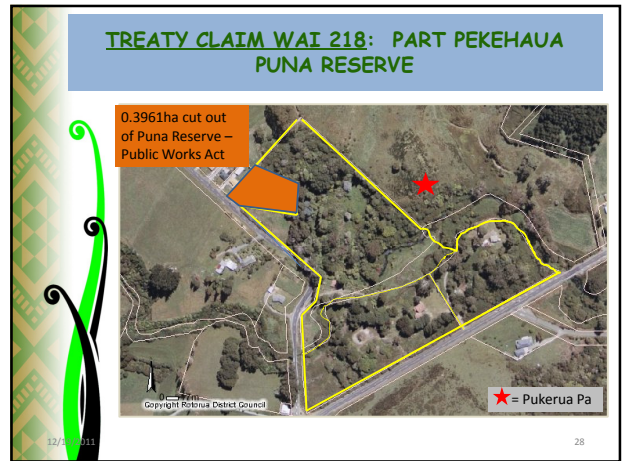
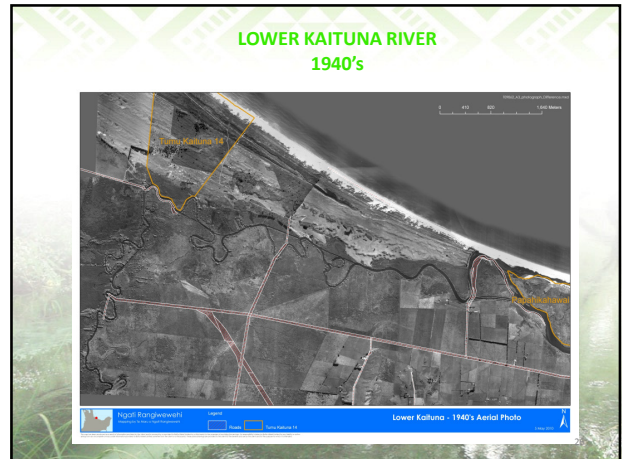


PAPAHIKAHAWAI 1940's

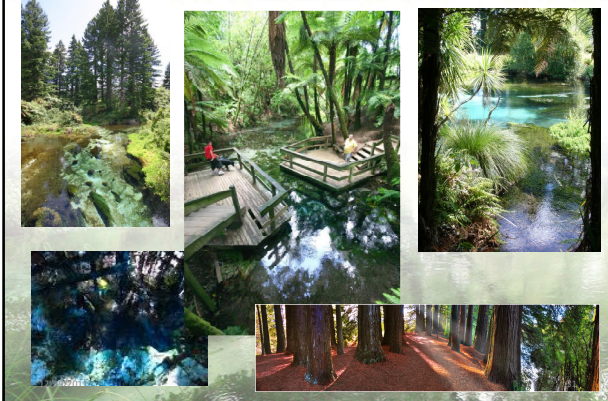


PAPAHIKAHAWAI 2007





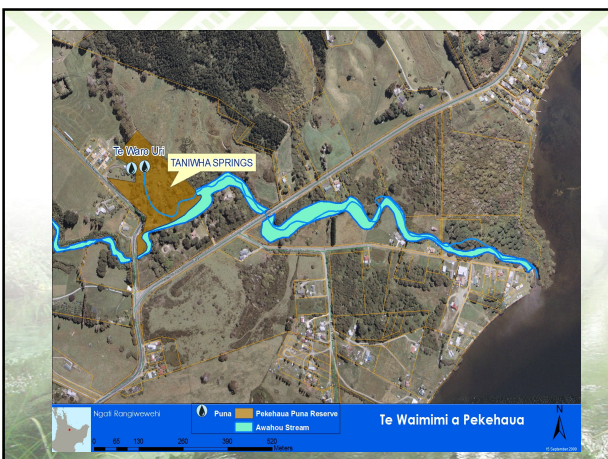
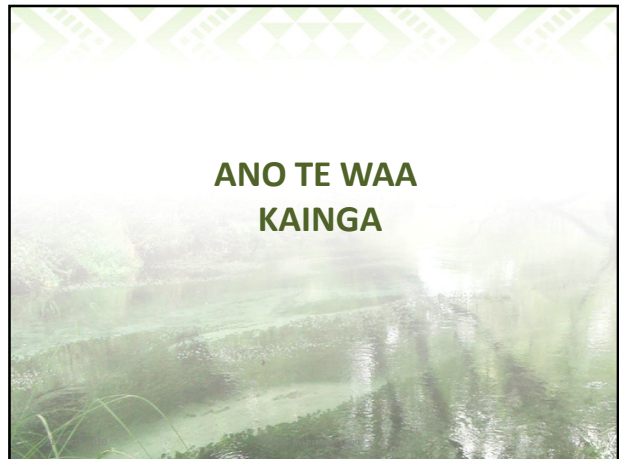
Te Puna i Hangarua -Kaikaitahuna

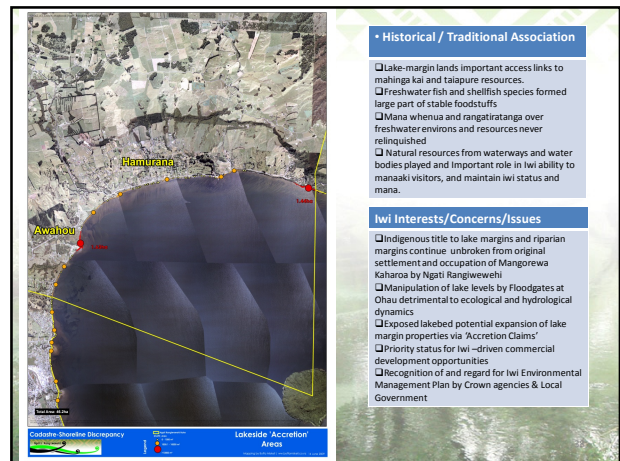
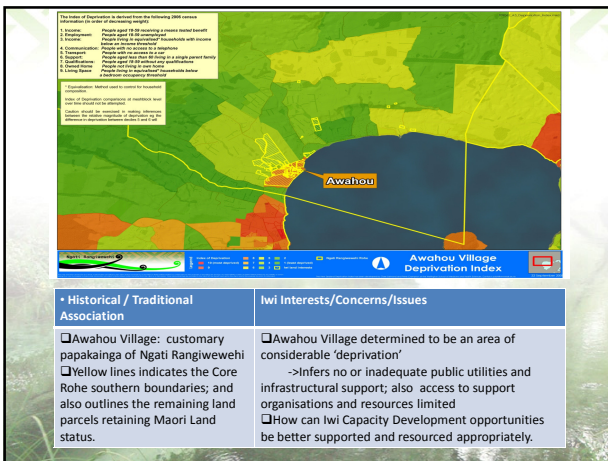


CNI CROWN LICENSE FORESTS



ANO TE WAA KAINGA





IWI-BASED SERVICES

Service provisions include:

- GIS spacial data analysis and mapping services
- Strategic planning & land development Consultation
- Cultural Impact Assessments
- Treaty of Waitangi Research & Sites of Significance mapping

Ngati Rangiwewehi

Te Maru o Ngati Rangiwewehi
Te Tari Taiao – Iwi Environmental Unit
 12 Western Rd
 Po Box 131
 NGONGOTAHA
 Email: info@rangiwewehi.com
 Website: www.rangiwewehi.com