

## **APPENDIX**

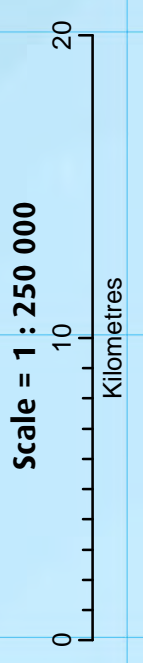
### **Tauranga Moana Map**



**DISCLAIMER**  
The extent of Ngati Ranginui's rohe (shown black) has been digitised from information supplied by the Office of Treaty Settlements - 11 November 2010. While considerable effort has been made to ensure that the information provided on this map is accurate, for all intents and purposes, the boundary should only be considered indicative.

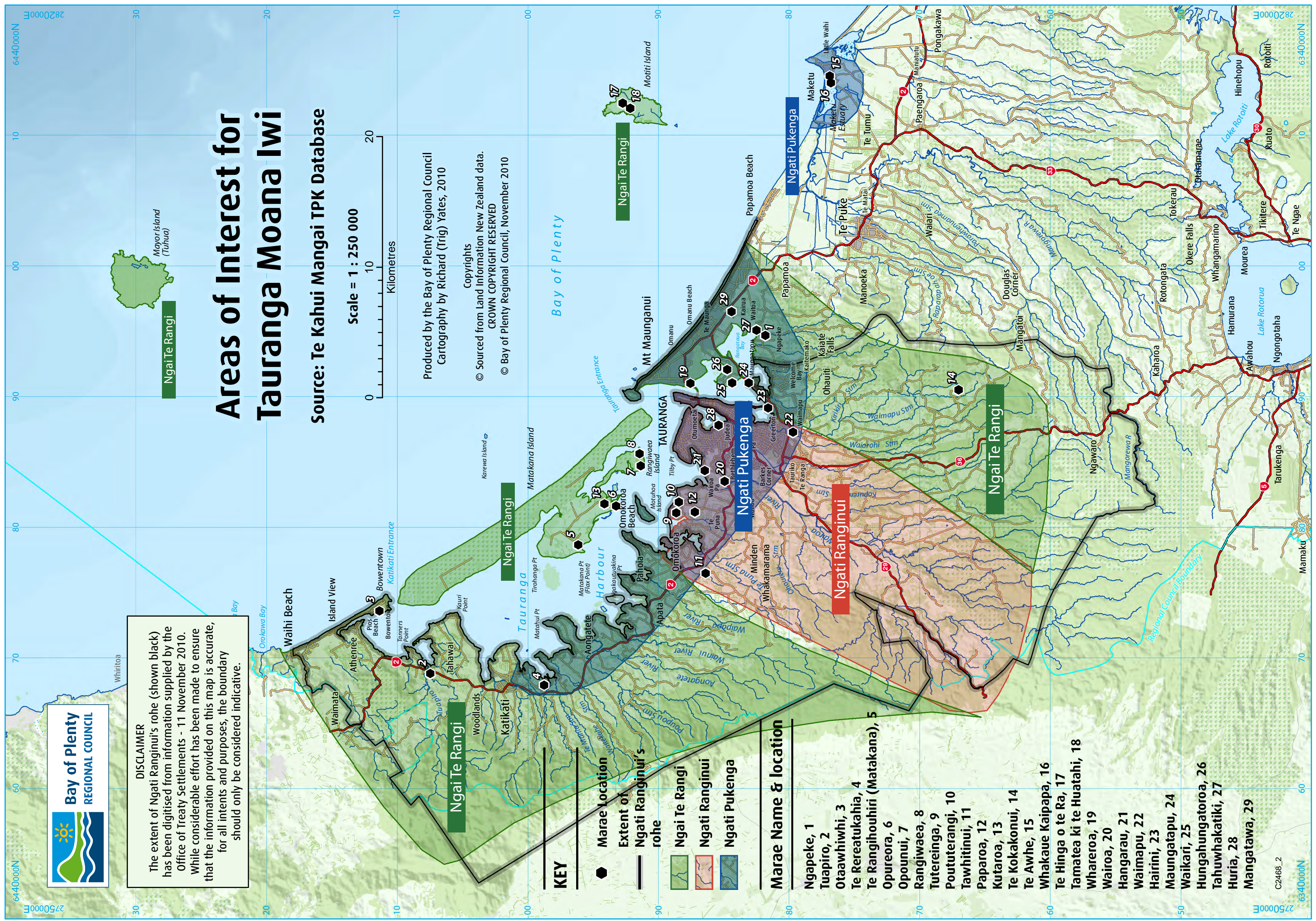
# Areas of Interest for Tauranga Moana Iwi

Source: Te Kahui Mangai TPK Database



Produced by the Bay of Plenty Regional Council  
Cartography by Richard (Trig) Yates, 2010

Copyrights  
Sourced from Land Information New Zealand data.  
CROWN COPYRIGHT RESERVED  
© Bay of Plenty Regional Council, November 2010



**KEY**

- Marae Location
- Extent of Ngati Ranginui's rohe
- Ngati Te Rangi
- Ngati Ranginui
- Ngati Pukenga

**Marae Name & location**

- Ngapeke, 1
- Tuapiro, 2
- Otaawhiwhi, 3
- Te Rereatukahia, 4
- Te Rangihouhiri (Matakana), 5
- Opureora, 6
- Opounui, 7
- Rangiwaaea, 8
- Tutereinga, 9
- Poututerangi, 10
- Tawhitinui, 11
- Paparoa, 12
- Kutaroa, 13
- Te Kokakonui, 14
- Te Awhe, 15
- Whakaue Kaipapa, 16
- Te Hinga o te Ra, 17
- Tamatea ki te Huatahi, 18
- Whareroa, 19
- Wairoa, 20
- Hangarau, 21
- Waimapu, 22
- Hairini, 23
- Maungatapu, 24
- Waikari, 25
- Hungahungatoroa, 26
- Tahuwhakatiki, 27
- Huria, 28
- Mangatawa, 29



**Public Excluded Section**